

# The Kansas Sonshine



Volume 82 : Number 2

Spring 2025

LWML Kansas District

*And the peace of God, which surpasses all understanding, will guard your hearts  
and your minds in Christ Jesus (Philippians 4:7).*

The 2025 LWML Convention will soon be here, June 26–29. There is so much convention information to pass along to you. Please read all about it in the following pages. Thank you in advance to all the delegates who will represent our district through an online voting process before the convention and as part of the voting delegation at the convention. The mission grant proposal list is available on the LWML Kansas District website at [kansaslwml.org/2025-convention](https://kansaslwml.org/2025-convention). Click on the bar, “2025–2027 Mission Grant Proposals” so that you can review them and share your recommendations with your zone delegate. As a former delegate, I can assure you that, with millions of dollars on the line, she wants help with this decision! See [page 3](#) for a list of the faithful women serving as your delegates.

We are pleased to send four Young Woman Representatives (YWR's) to the LWML Convention! Read all about these Young Women *in Mission* on [page 11](#). Miles for Mites to Omaha looks like quite an adventure. Some serious cyclists are pedaling their way from St. Louis to Omaha to raise money for mite offerings. Learn more about them on [page 5](#) to see how you might be part of their mission and/or cheer them on! Information about convention offering opportunities, registration and convention meals, and information about our LWML Kansas District bus may be found on [pages 3–5](#).

MARK YOUR CALENDAR! Kansas Assembly of Leaders (KAOL) will be July 25–26. This year's attendees include group presidents, zone chairmen, zone presidents, and all district personnel. Plan to attend “Grace-full Leaders,” based on 2 Peter 3:18, *But grow in the grace and knowledge of our Lord and Savior Jesus Christ. To him be the glory both now and to the day of eternity. Amen.* KAOL will be facilitated by LWML Vice President of Christian Life, Susan Brunkow. Invitations will include all details. Attendees will enjoy a day of education, fun, worship, and fellowship. We will even throw in some shopping at the LWML Store!

Be sure to submit your group's mite offerings to the correct address. **Zone and Group Treasurers**, please take note of this **new address**: LWML Kansas District Financial Secretary, Carolyn Fishburn, P.O. Box 491, Haven, KS 67543. You may find a remittance voucher [here](#).

This is my prayer for you, my fellow missionaries, as you go about the business of serving the Lord with gladness. No matter where you are — at home, the grocery store, the nursing home; or what you are doing — caring for a sick child, buying groceries for a homeless family, or visiting a church friend; may God's peace go with you. The more you let God's peace envelope you, guarding your heart and your mind, the more it will spread out to those around you, touching their lives with God's love. May you travel through the hustle and bustle of your lives of service enveloped in God's peace and sharing it with others.

President Elaine

Elaine Engelman  
District President



Be sure to check out these pages ...

Archivist/Historians Report ..... [page 13](#)  
Call for District Nominations ..... [page 12](#)  
Counselor's Corner ..... [page 2](#)  
Christian Life Retreat Brochure ..... [page 9](#)

Dates to Remember ..... [page 16](#)  
2025 LWML Convention Info ..... [pages 3–5](#)  
Young Woman Representatives ..... [page 11](#)  
Zone and Group News ..... [page 14](#)

## COUNSELOR'S CORNER

Rev. Kenton Abbott | Pastoral Counselor

*For the grace of God has appeared, bringing salvation for all people, training us to renounce ungodliness and worldly passions and to live self-controlled, upright, and godly lives in the present age, waiting for our blessed hope, the appearing of the glory of our great God and Savior Jesus Christ, who gave himself for us to redeem us from all lawlessness and to purify for himself a people for his own possession who are zealous for good works (Titus 2:11–14).*

It is very likely that each and every one of us has a movie that is either a favorite, one that can be watched over and over again, or one that leaves a lasting impact. A movie that I remember and enjoyed as a youth, is *The Outsiders*. This is a movie about teenagers from different walks of life and from different sides of town. It is a story of teenagers trying to find their way to adulthood, trying to figure out where they fit in, and how to live with others who are different from themselves. In the movie, one of the characters rescues children from a burning church and ends up dying from injuries that he sustained while doing this. This is a pivotal point, not only in the lives of the children that he saves, but also in the life of his friend, Ponyboy.

By God's amazing grace, mercy, and love, we are no longer outsiders because of the cross of Jesus Christ. In the church year, we are moving from one side of the cross to the other, from the penitential side of Lent, where we look and speak of looking forward to being at the foot of the cross on Good Friday and the Easter empty tomb. It's a time of looking forward to the time God's promise of a New Covenant would be fulfilled in His Son, Jesus Christ. This New Covenant is by the blood of Jesus Christ; you are washed clean and if you confess Jesus as Lord and believe that God has raised Him from the dead, by faith you will be saved. This is a gift from God, through the water and His Word of promise and institution in Baptism.

In Baptism, we are not only washed clean of the sins we inherited from Adam, but God also connects us to Christ Jesus, and we are joined to his death and resurrection. In Luther's Small Catechism, the question is asked, "What great things does God do through Baptism? God works forgiveness of sins, rescues us from death and the devil, gives eternal salvation." In Galatians 3:27, we read, *For as many of you as were baptized into Christ have put on Christ*. The cross of Jesus, His death and resurrection, is the pivotal point for our lives. The new life, that God creates in us, is the renewed and sanctified life in Christ that flows forth in us through Baptism.

As we now live on this side of the cross, the side where our Savior is risen and alive, let us walk in this newness of life. While we are still awaiting Holy Week and to celebrate Easter morning this year, let us walk each and every day of our lives with our eyes fixed on Jesus. He is the founder and perfecter of our faith. Yes, we look forward to celebrating and praising the return of the *Alleluias* to our worship, but for now we continue *Growing in God's Grace* each and every day. Each day, God's mercies never end; they are new every morning and the steadfast love of the Lord never ends (see Lamentations 3:22–23).

The Lord bless you and keep you, as you look forward with hope and joy to the day when we will live with God eternally in the resurrection to come. Amen.

Pastor Kenton Abbott  
Jr. Pastor Counselor



# LWML 2025 CONVENTION INFORMATION

Elaine Engelman | District President



Date: June 26-29, 2025

Location: Omaha, Nebraska

Convention Center: CHI Health Center, 455 N 10th St, Omaha, NE, 68102

Theme: Growing in God's Grace

Scripture Verse: *But grow in the grace and knowledge of our Lord and Savior Jesus Christ. To him be the glory both now and to the day of eternity. Amen* (2 Peter 3:18).

Goal Statement: Through Word and Sacrament, I will grow in grace to serve our Lord and proclaim His glory.

Find out more at [lwml.org/convention](http://lwml.org/convention).

## LWML CONVENTION NEWS *So much it needs its own pages!*

### Delegates

Our LWML Kansas District delegation has been chosen and all our credentials are in place! We will have 12 voting delegates, four (4) Young Woman Representatives (YWRs), LWML Kansas District Junior Counselor Rev. Kenton Abbott, and myself. The following faithful women have been chosen to represent our district through an online voting process before the convention and as part of the voting delegation in Omaha.

Herington Zone	Marilyn Will (delegate), Donna Walker (alternate)
Hutchinson Zone	Darlene Magnuson (delegate), Kris Standley (alternate)
KC Crossroads Zone	Jan Carroll (delegate), Shirley Lusk (alternate)
Lincoln Zone	Valerie Crawford (delegate)
Linn Zone	Lynnette Scheele (delegate), Loma Turk (alternate)
Manhattan Zone	Pam Steinmeyer (delegate), Mary Reed Spencer (alternate)
Northeast Zone	Tami Rutten (delegate)
Northwest Zone	Marla Reinert (delegate), Brenda Wolters (alternate)
Southeast Zone	Carol Olson (delegate), Beth Ringwald (alternate)
Southwest Zone	Brooksie Appel (delegate)
Topeka Zone	Karen Peterson (delegate), Rebecca Gutierrez (alternate)
Wichita Zone	Ruth Valdez (delegate), Katie Wilson (alternate)

Please support the women who are representing you by covering them in prayer. Ask God to give them discerning hearts as they vote and protect them as they travel.

### District Bus Info

The district bus is heading to Omaha!! We have at least 41 passengers ready to load up in Wichita, Salina, Alma, and Fairview, and make their way to the CHI Center in Omaha. Travel expenses will be calculated and confirmation letters will be sent as soon as possible. The exciting news is that individuals will be able to pay for their rooms at the motorcoach hotel for themselves during their stay. The LWML Kansas District credit card will be used to hold the rooms until convention, and individuals will be able to switch payment to their personal credit card any time while at the convention. We hope this will be a more concise method of room payment. We're so thankful to be able to send a district bus to convention!



Headed to Omaha!

### Gifts from the Heart

Be sure to read about Gifts from the Heart (GFTH) in the Caring Service report, [page 8](#).

# LWML CONVENTION INFORMATION

Elaine Engelman | District President

---

## Convention Registration Info and Meals

If you plan to attend the convention, please register ASAP! Late registration begins May 1, with a price increase of \$50. As you register, be sure to indicate that you are from the LWML Kansas District. This will indicate how many of you could potentially attend our district caucus on Thursday afternoon. Plan to attend the caucus to meet delegates and see the pinning of the YWR's. We will try to organize a district photo, as LWML will not offer this service.

Ordering convention meals helps the LWML meet the food and beverage minimum with the CHI Center, and it is a time saver for you, alleviating time spent standing in concession stand lines and looking for a place to sit. Concession vendors charge tax and gratuity, so you may not be saving as much as you think; these costs are included in the convention meals. There are restaurants within walking distance of the CHI Center, but you will need to allow walking and wait times in your schedule. Be aware that there are other big events happening in Omaha close to the CHI Center that weekend, so restaurants will be serving other large groups besides our "purple peeps."

For Friday lunch, you **do not** have to purchase a convention meal in order to hear a speaker, but you **do** need to sign up for the speaker session in order for your place to be held. For Saturday lunch, you **do** have to purchase the convention plated meal in order to hear one of the mission speakers.

**REMEMBER, EVERYTHING AT THE CONVENTION CENTER AND THE HOTELS IS CASHLESS. PLEASE MAKE ARRANGEMENTS TO PAY FOR EVERYTHING WITH CREDIT OR DEBIT CARDS!**

Registration is **online only**. Please be willing to help someone in your group or zone who is doesn't have access to a computer to register. Or, if you need help — please ask!

---

## Convention Banner

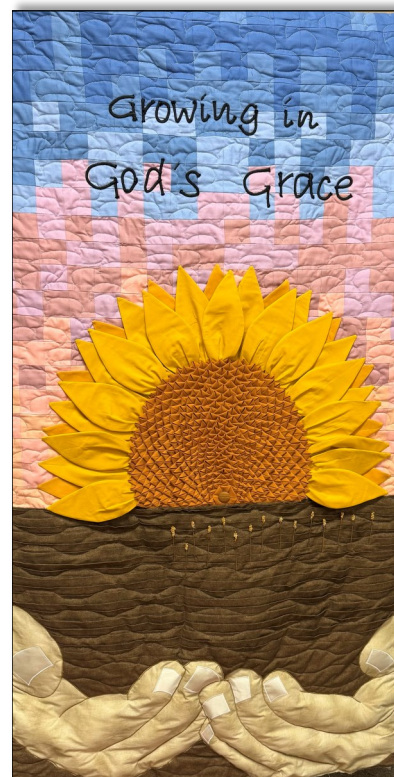
A very BIG thank you to the women at Immanuel Lutheran Church, Helper, who designed and constructed the 2025 convention banner for the LWML Kansas District.

The banner's description is as follows:

The banner depicts a field of wheat carefully wrapped in the hands of God as a reminder that God provides for us in many ways. The sunflower sun is a nod to the beautiful Kansas sunsets that always remind us of Him. As the sun rises and sets in the Sunflower State, we are reminded that God has His hands on us, as we grow in His grace!

Tina Symm constructed the banner and Deb Lehman helped with quilting. Joyce Hagemann, Rachel DeBusk, and Bethany Stoeve assisted with cutting material, making prairie points, and sewing the wheat. Within the banner there are various techniques including the pieced quilt section, folded "prairie points" (center of the sunflower), tucking (to create furrows), cord applique (the letters), and "trapunto" (stuffed appliqued hands).

*The banner is not quite finished in this photo. The wheat field (the brown section) will be filled with wheat when completed. Be sure to see the banner in person if you attend the LWML Convention!*





# LWML CONVENTION INFORMATION

Elaine Engelman | District President

## Convention Offerings

There will be four offering opportunities during the convention:

- ◆ **Offering #1**, Thursday evening worship service — 2025–2027 LWML Mission Grant goal.
- ◆ **Offering #2**, Friday afternoon — Camp Linn Haven/Mountainside Lutheran Church, Newland, North Carolina, devastated by Hurricane Helene.
- ◆ **Offering #3**, Saturday morning — Grace Point Institute for Relational Help, Lincoln, Omaha, and Columbus, Nebraska, providing pastoral care and counseling for pastors and church workers.
- ◆ **Offering #4**, Saturday afternoon — Lutheran Early Response Team (LERT), Oklahoma District, to purchase large equipment for debris removal at disaster relief sites nationally.

**MILES  
4  
MITES  
to  
Omaha**

2025 marks the third biennial bicycle ride to an LWML national convention! In 2021, Carla Elenz rode solo 630 miles from her home in Michigan to Lexington, Kentucky. In 2023, Carla was joined by Kathy Sowers and Sandy Newport, riding a combined distance of 722 miles to Milwaukee, Wisconsin. Approximately \$13,500 were raised for mites as a result! Carla and Kathy have committed to ride to the 2025 convention in Omaha, starting at the LWML headquarters in St. Louis, a distance of about 550 miles in ten days of bicycle riding. Sandy will provide communication support.

These women are passionate about supporting the mission projects funded by LWML, and use their talents for riding bikes to raise money for mite donations. Donations can be made directly to Miles for Mites at this website, [lwmlmichigan.org/donate](http://lwmlmichigan.org/donate). Select "Miles for Mites." All funds go directly to mite offerings.

The cyclists will be looking for host families close to the route they'll be taking (see map below). Their daily stops will be determined by the hosts they obtain. Updates on their training, route, trip details, and pictures will be posted at [facebook.com/groups/milesformites](https://facebook.com/groups/milesformites). Share their adventures and give them encouragement along the way.

To contact these LWML sisters, email Carla Elenz at [carla.elenz@gmail.com](mailto:carla.elenz@gmail.com); Kathy Sowers at [kssowers2006@yahoo.com](mailto:kssowers2006@yahoo.com); or Ruth Steele at [resteele1445@gmail.com](mailto:resteele1445@gmail.com).



## COMMUNICATION

Allison Lehmann | VP of Communication

Do you like to share good news? Throughout His earthly ministry, Christ *went through the cities and villages proclaiming and bringing the good news of the Kingdom of God* (Luke 8:1). Have you ever stood up tall, raised your voice, and burst out with exciting news for all to hear? Sharing the news of the arrival of a baby or acceptance into a top-choice college or job are events we don't want to keep to ourselves.

Have you thought about sharing the exciting news happening in the LWML Kansas District?

- \* Mission Grant #4 AND Mission Grant #5 are paid! Thanks be to God!
- \* 2025 LWML Convention registration is open — are you going? Did you see the eblast with convention registration tips?
- \* The 2025 Prayer Service is available online, how can your group use it?
- \* Did you see the new Bible study in the Spring *Lutheran Woman's Quarterly*?

Wow — that's a lot of news to share with others! Had you seen or heard this information before now? The Communication Committee is here to share information about the LWML Kansas District through our website, [kansaslwml.org](https://kansaslwml.org), Kansas LWML Facebook page, eblasts, and *The Kansas Sonshine*. You can sign up for eblasts through the website by clicking on the Contact Us tab and filling out a request. And don't forget to share the names and contact information of newly elected zone and group officers with your zone president to be submitted to the LWML Kansas District directory.

If your group hasn't submitted the Quarterly and Web Maintenance fees, please do so **as soon as possible**. There has been a \$0.50 increase in the cost of each *LWQ* subscription this year. If you have already paid, THANK YOU! If not, the remittance form can be found at [kansaslwml.org/organizational-resources](https://kansaslwml.org/organizational-resources) under the Forms tab ([here](#)). The web maintenance fee helps pay for our website domain and our webservant to help keep you informed!



### TECHNOLOGY MANAGER NEEDED

Do you enjoy all things technology? Do you have the ability to assist others with PowerPoint presentations and other computer related materials? The Communication Committee is actively looking to fill the position of Technology Manager to assist with technology needs at all LWML Kansas District events, including district conventions, Kansas Assembly of Leaders (KAOL), and the District Christian Life Retreat. If needed, this position could be shared between two people. If you, or someone you know, are willing to serve in this position, please contact the VP of Communication. Questions—contact [communication@kansaslwml.org](mailto:communication@kansaslwml.org). With KAOL coming up this July and a convention next spring, this is an important position to fill as soon as possible!

## GOSPEL OUTREACH

Julie Hatesohl | VP of Gospel Outreach

If you have ever served as a delegate, you know how difficult it can be to make the decision when voting for mission grants, especially knowing that, as a delegate, you represent the opinions of your zone or group. Delegates appreciate your thoughts and opinions. Please be sure to review the 2025 LWML (national) mission grant proposals and provide input to your zone delegate(s) for the upcoming selection of mission grants.

**2024–2026 LWML Kansas District Mission Grant Update** The LWML Kansas District Executive Committee has approved funding for Mission Grants #4 and #5. Mission Grant #4 was awarded to Shepherd's Canyon Retreat in Wickenburg, Arizona. The \$5,000 is to be used for church workers and their spouses who are in need of financial assistance to attend the retreat center.

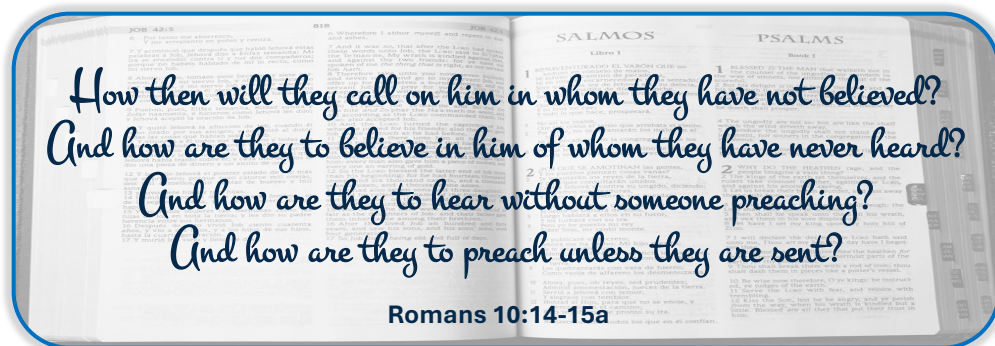
Mission Grant #5 was awarded to K-9 Comfort Dog Ministry (Keren) in Ellsworth, Kansas. The \$7,000 will be used to purchase plush puppies (plushies) for Keren's ministry team to distribute to those hurting and in need.

**Student Financial Aid Applications** Student Financial Aid (SFA) applications are now available through the LWML Kansas District website, [kansaslwml.org/gospel-outreach](https://kansaslwml.org/gospel-outreach). Click [here](#) for application. **Applications are due June 1, 2025.** Student financial aid is available to any student attending an LCMS university or seminary studying to become a church worker.

**2026–2028 Mission Grants and God's Gracious Gift Fund Applications** Applications are now available for 2026–2028 LWML Kansas District Mission Grants and God's Gracious Gift Fund (GGGF) proposals through the LWML Kansas District website, [kansaslwml.org/gospel-outreach](https://kansaslwml.org/gospel-outreach). Click [here](#) for application. **Applications are due September 1, 2025.**

We are asking that all mission grant applications include pictures for the organization or project requesting funds at the time the application is submitted. Our plan is to have the mission grant and God's Gracious Gift Fund proposals video available early next year for viewing prior to the 2026 LWML Kansas District Convention. The video may provide clarity and information for sharing the proposed grants with groups and zones. We encourage input to group delegates for voting purposes. Because we are asking for pictures at the time the applications are submitted, the application is only available as a PDF. Application forms will not be available to submit online. Printed or scanned applications will be accepted.

Mission grant proposals may be submitted by an LWML or LCMS group or individual. If you are considering submitting an application, please take time to read the guidelines page, which gives instructions to complete the application.



## CARING SERVICE

Linda Stanton | VP of Caring Service

Lent is a time for Reflection and Repentance. Easter is a time for Resurrection and Rejoicing; and now, in Christ we have Redemption and Restoration!!! I pray that the celebration of Easter will reverberate in our souls, giving us new hope and momentum for God's service. *But you will receive power when the Holy Spirit has come upon you, and you will be my witnesses in Jerusalem and in all Judea and Samaria, and to the end of the earth (Acts 1:8).*

The theme, "Growing in God's Grace," is perfect for the LWML Convention in Omaha. As we grow in the grace and knowledge of our Lord, may God produce in us the fruit of good works and giving. Please communicate with all members and groups in your zones and congregations about the "green" way we will donate Gifts from the Heart (GFTH) in Omaha. To all of you who have access to a computer, please volunteer to order gifts for other members who may not have a computer, or do not wish to order online. Make your donated orders, choosing the recipient and the gifts on the LWML website, <https://unite-production.s3.amazonaws.com/tenants/lwml/attachments/498449/2025-GFTH-Omaha-Flyer-FINAL.pdf>. You can shop online and ship directly to the recipients. Three ministries selected to receive items from GFTH are Camp Luther of Nebraska, Lutheran Family Services of Nebraska, and The University of Nebraska at Lincoln Campus Ministry. *Gift cards of \$50 or less will be accepted at the convention; please include the amount on or with the gift card.*



In addition to GFTH for the Omaha convention, many groups will be busy serving the Lord with gladness right in their own congregations and hometowns. We ask God to bless all our efforts across Kansas to share the good news of Jesus Christ and share gifts from the heart wherever and whenever they are given.

*Each one must give as he has decided in his heart, not reluctantly or under compulsion, for God loves a cheerful giver  
(2 Corinthians 9:7).*

## CHRISTIAN LIFE

Cathi Temple | VP of Christian Life

Here we are entering Easter season! It seems like we just finished celebrating the birth of our Savior, doesn't it? How are you handling the swift passage of time? Are the "winds of change" buffeting you and throwing you against the rocks, or are you standing firm and secure on the Rock?

As we continue our journey through the year of our Lord 2025, I pray that each of us can find the peace that comes from knowing that, as the psalmist says, *He only is my rock and my salvation, my fortress; I shall not be shaken (Psalm 62:6)*. No matter what is thrown at us, we can be assured that our Rock will keep us safe from the storms of life.

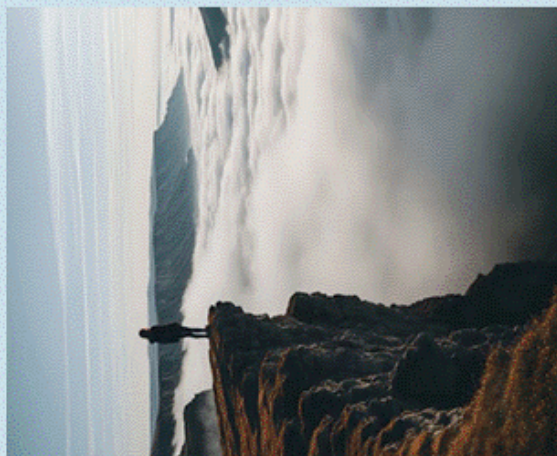
Please plan to join the LWML Kansas District Christian Life Committee on November 7–8, at the Hilton Garden Inn in Salina, for the Fall Christian Life Retreat featuring Donna Snow! Donna will lead us in discovering just how firm our foundation is when we place our trust upon the Rock. You will find registration details in this edition of the Sonshine, on pages 9–10.

We continue to work with the LWML Kansas District Communications Committee to update our page on the District website. Please feel free to contact us with any questions or suggestions concerning resources.



***Lutheran Women  
in Mission  
Christian Life Retreat***

**Featuring  
Author  
Donna Snow**



Used by permission Pixabay.com

**November 7-8, 2025**

Hilton Garden Inn and

Convention Center

3320 S. 9th Street

Salina, Kansas 67401

***Sponsored by the  
LWML Kansas District  
Christian Life Committee***

Enjoy a relaxing weekend of  
connecting with old friends and  
meeting new ones.

ENJOY MUSIC

MEDITATE IN GOD'S WORD

LIGHTEN YOUR SPIRIT  
WITH LAUGHTER

WE WILL BE

***Unshaken:  
Standing on the  
Rock***



The LWML Kansas District Store  
will have items available for  
your shopping enjoyment.



Used by permission Pixabay.com

*Therefore let us be grateful for  
receiving a kingdom that  
cannot be shaken, and thus let  
us offer to God acceptable  
worship, with reverence and  
awe, for our God is a  
consuming fire (Hebrews  
12:28-29).*





Photo Courtesy of Artesian Ministries

Donna Snow is a sought-after Bible teacher; however, her path from unchurched to become passionate about sharing Jesus was difficult. Early in Donna's journey she became involved with the *Lutheran Women in Mission*, who loved working on mission projects and loved Bible study. Donna says, "I was elected to a state-wide position that required me to provide spiritual resources to the women of Texas. So I began writing Bible studies, which began spreading beyond Texas. Eventually, churches began inviting me to teach from my studies at live events. I finally knew why God created me."

In 2011 Donna established Artesian Ministries which is now a 501(c)(3) nonprofit, charitable organization with the sole purpose of providing resources to get people into God's Word.

Donna says, "God literally pulled me out of the pit, put my feet on His rock, and has never let me go."

## AGENDA

### FRIDAY ~ November 7

— *Dinner on your own before the event starts* —

5:00 p.m. — Registration Open, check into rooms / Shopping Open until 6:30 p.m.

6:30 p.m. — Welcome / Session I

7:30 p.m. — *Evening Prayer Service*

8:30 p.m. — Fellowship:

### SATURDAY ~ November 8

7:15 a.m. — Registration Opens

7:30–8:30 a.m. — Breakfast provided  
Shopping Open until 9:00 a.m.

9:00 a.m. — Welcome / Session II

11:00 a.m. — Break / Shopping Open  
until 12:30 p.m.

11:30 a.m. — Lunch Served

12:30 p.m. — Session III

2:15 p.m. — Closing Thoughts

The LWML Kansas District Christian Life Committee would like to welcome you all to the *Christian Life Retreat*. Praise the Lord for His blessings as we stand Unshaken on the Rock of His Grace.

Name: \_\_\_\_\_  
Address: \_\_\_\_\_  
City: \_\_\_\_\_ Zip: \_\_\_\_\_  
Phone: \_\_\_\_\_  
Email: \_\_\_\_\_  
Home Church: \_\_\_\_\_  
Special Needs: \_\_\_\_\_

## REGISTRATION:

(PLEASE CHECK YOUR CHOICES AND ENCLOSE AMOUNT ACCORDINGLY)

**Hotel Room, Meals & Activities for One Great Price!**  
Please use one form for each registrant.

*Rooms are Double w/Double Beds*

- ☐ 1 person/room \$ 200.00  
☐ 2 persons/room \$ 140.00 per person  
☐ 3 persons/room \$ 120.00 per person  
☐ 4 persons/room \$ 110.00 per person  
☐ I plan to attend the retreat, but will not stay at the hotel. Registration cost: \$85.00  
Includes Breakfast and Lunch

**PLEASE ADD \$10 if postmarked AFTER**

**September 29, 2025**

\* I have a roommate/s: (Please List) \_\_\_\_\_

\_\_\_\_\_ The Committee may assign me a roommate.

## Saturday Meals Included

**Breakfast:** Scrambled Eggs, Bacon, Breakfast Potatoes, Fresh Fruit, Muffins

**Lunch:** Salad & Potato Bar—Salad (choice of two dressings) Baked Potato (bacon bits, shredded cheese, sour cream, chives, butter) Rolls, Cookies

**Make checks payable to  
LWML Kansas District.**

Please send registration form with payment to:

Heather Rolf  
928 Wayside Road  
Westphalia, KS 66093



## SPECIAL FOCUS MINISTRIES

Sarah Kleopfer | VP of Special Focus Ministries

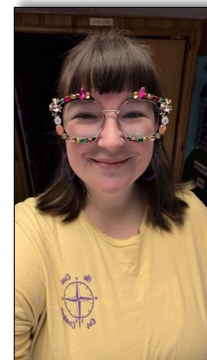
The Special Focus Ministries committee is excited to announce our YWRs for the 2025 LWML Convention in Omaha. We had great applicants this year and we are pleased to introduce the four young women who will be attending the convention. Please introduce yourself to these young women and keep them in your prayers as they prepare to attend the convention.

Claire Banion is a member of Faith Lutheran, Topeka. She is a teacher at a Christian hybrid school. Claire is an active member of LWML and serves as the recruitment chair. At Faith Lutheran, she also teaches the Pre-K Wednesday Night Bible Class and leads an adult small group. She is also a busy wife and mom!



Olivia Gaschler is a member of Immanuel Lutheran, Linn. She is a Music Therapist and has been able to work with residents in long-term care facilities. She is very involved with music at church, where she uses her gifts as choir director. She has also been in choirs, handbells, and praise teams. Olivia is active in her church including women's Bible studies.

Erikka Geuy is a member of Our Redeemer Lutheran, Hutchinson. She is an LCMS preschool director and teacher at St. Paul's, Cheney. Erikka helped start a fourth LWML group at Our Redeemer and uses her musical talents, both vocal and instrumental, in both congregations. She is happy to jump in and help wherever she is needed.



Sadie Meyer is a member of St. Paul Lutheran, Fairview. Sadie works part time at a local flower shop as well as working on her family farm. She is very active in her church, serving on the Evangelism Committee, the Altar Guild and by making and serving coffee and refreshments after services. Sadie is active in LWML, where she attends meetings, leads devotions or Bible studies and helps serve funeral dinners.

*Young Women*  
**IN MISSION**

## CALL FOR DISTRICT NOMINATIONS

LaJean Rinker | Nominating Committee, Chair

### CALL FOR NOMINATIONS LWML KANSAS DISTRICT CONVENTION APRIL 2026

The following offices will be on the ballot for the 2026 LWML Kansas District Convention, to be held in Manhattan. All elected officers serve a four (4) year term.

Vice President of Christian Life  
Vice President of Gospel Outreach  
Vice President of Organizational Resources  
Vice President of Special Focus Ministries  
Treasurer

Under the **District Resources** tab on the Organizational Resources page of the LWML Kansas District website, [kansaslwml.org/organizational-resources](https://kansaslwml.org/organizational-resources), you will find details of these offices under **District Bylaws 2024** and **Leadership Guidelines, Chapter 2 – Officer and Department Duties**. You may also contact the officers currently serving in these capacities, should you desire additional information directly from them. Current officers' contact information may be found on the home page of the website under the **Contact Us** dropdown list, [kansaslwml.org/executive-committee](https://kansaslwml.org/executive-committee).

Any member of the LWML Kansas District may submit names to be considered for inclusion on the ballot, providing you have the written permission of the person you are nominating. Please prayerfully consider these opportunities for service and let any of the committee members know if you or someone you know would be interested in being considered for any of the positions.

LaJean Rinker, Topeka Zone, Chair  
[nominations@kansaslwml.org](mailto:nominations@kansaslwml.org)

Lisa Brack, Lincoln Zone      Sara Deepe, Wichita Zone  
Betsy Friedrichs, Linn Zone      KC Crossroads Zone, pending  
Ex-officio Members: Kim Burdett, Past President  
Rev. John Werner, Sr. Pastoral Counselor



## CHURCH WORKERS IN MISSION (CWIM)

Joyce Duitsman | CWIM Coordinator



### A Warm LWML Welcome to Kansas!

Welcome to these pastors!

If you have the opportunity, please welcome them personally!

Rev. Dale Skurla, St. Paul, Leavenworth, installed January 12, 2025

Rev. Jacob Dandy, Trinity, Atchison, installed January 12, 2025

Rev. Nathan Harkins, Faith, Abilene, installed March 16, 2025



## DISTRICT ARCHIVISTS/HISTORIANS

Marie Roth | Co-Archivist

### Spotlight on the 10th Kansas District Convention: Dodge City, 1964

The 10th biennial convention of the LWML Kansas District met in Dodge City on May 7–8, 1964. Total registration for the convention was 573 women. The convention theme was *Seek the Things Above*. The convention offering of \$512.42 went to Lutheran World Relief for the Alaskan earthquake, which occurred at 5:36 p.m. on Good Friday, March 27, 1964. 131 people died during the initial 9.2 earthquake, and subsequent landslides and tsunamis. One mission grant of \$1,000 was approved for Grace Lutheran Church, Hill City. \$900 scholarships were approved for 8 recipients, totaling \$7200. The Day of Prayer offering was divided: \$1000 to Lutheran Social Services, \$500 to LCMS Department of Social Welfare, \$500 to Faith Lutheran Church in Kansas City, Kansas for program expansion, and \$370.90 to St. John's College development fund. Mrs. Raymond Briggemann of Luka was the newly-elected president. A Christian Growth workshop was held on May 6, by Rev. Paul Hansen. The workshop theme was *Bearing the Brand of Christ*, from Galatians 6:7.



Seek the  
Things Above  
Dodge City  
May 7–8, 1964



# LWML KANSAS DISTRICT ZONE AND LOCAL GROUP NEWS

## UPCOMING ZONE EVENTS

The **HUTCHINSON ZONE** will have their Spring Meeting on March 29, 2025, from 9 a.m.–2 p.m. at Immanuel Lutheran, Canton. The speakers are Pastor and Cheryl Masinelli from Cheney. They will speak about their experiences as missionaries in Uganda and the Bahamas.

+++++

The **NORTHEAST ZONE** is planning their Spring Gathering on April 12, 2025, at Fairview, Kansas. The Ladies of St. Paul will host. We look forward to having LWML Kansas District President, Elaine Engelman, come to our gathering. We are excited about a possible visit from our Miles 4 Mites cycling sisters as they travel through parts of the Northeast Zone on their journey to the LWML Convention in Omaha.

+++++

The **TOPEKA ZONE** Spring Meeting will be co-hosted by Messiah and Faith Lutheran Churches in Emporia on March 29. We look forward to hearing Pastor Reichart give a devotion on Psalm 136:12, *with a strong hand and an outstretched arm, for his steadfast love endures forever*. Donna Spain will share information about Loving Hands, a foster ministry started by members of Messiah Lutheran Church. The ministry provides essentials to children as they enter the foster care system and will receive the Gifts from the Heart.

+++++

## LOCAL GROUP NEWS

The **HOLY CROSS LWML GROUP, WICHITA**, held a Women's Retreat on Saturday, March 1. Over 140 guests were in attendance, as author and speaker Deb Burma presented *Leaning on Jesus*. Attendees were welcomed by a touch of spring through colorful quilts, table coverings, and sunflowers in abundance. We enjoyed a light breakfast and a taco bar for lunch. All participated in a couple of sessions of group singing and were blessed by a beautiful solo of *In This Very Room*. Sunflower themed door prizes were given throughout the day. We were all very blessed through Deb's message and left refreshed and with a greater understanding of how to lean into Jesus and to lean on one another.



Deb Burma at Holy Cross Retreat

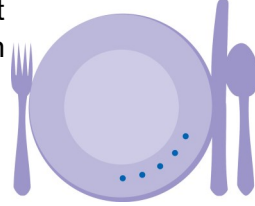


Quilts and Sunflowers, Holy Cross Retreat



## LWML KANSAS DISTRICT ZONE AND LOCAL GROUP NEWS

**CHRIST THE KING LWML, SALINA**, coordinated their annual Chicken Noodle Dinner on Saturday, February 22, 2025, from 4–7 p.m. A homemade chicken and noodle dinner, complete with dessert, was served. Dine in, carry-out, and delivery service were available. Over \$2,000 in proceeds from this project are going to help with the Sanctuary Renovation Project.



+++++

**IMMANUEL LWML WinGS, HEPLER**, members enjoyed a progressive dinner in October, 2024. The evening started with appetizers at a new local restaurant, on to entrees at the Fellowship Hall and dessert, fellowship, and conversation around the firepit at a member's home. Each stop included Bible study and prayer based on Psalm 34:8, *Oh, taste and see that the LORD is good!* following the theme of a menu or meal, and discussing the spiritual food God provides for us in the Bible. In January, 2025, members joined together to prepare and package 26 individual meals of meatloaf, cheesy potato, and green beans, and 26 bowls of beef stew that were delivered to a local low-income housing group.



WinGS Progressive Dinner



WinGS Progressive Dinner



WinGS Meal Prep



WinGS Progressive Dinner

## 2025 DATES TO REMEMBER

<b>April 20</b>	Easter Resurrection Joy!
<b>April 20–30</b>	President Elaine out of the office with spotty cell and internet service
<b>May 18</b>	Kansas District banner designs due to President Elaine
<b>May 30–31</b>	EC meeting #2, Herington Retreat Center
<b>May 31</b>	First Convention Planning Meeting, Herington Retreat Center
<b>June 24–25</b>	President Elaine to attend Presidents Assembly, Omaha, Nebraska
<b>June 26–29</b>	LWML Convention, Omaha, Nebraska
<b>July 24–25</b>	EC meeting #3, Salina
<b>July 25</b>	BOD meeting, Salina
<b>July 26</b>	Kansas Assembly of Leaders (KAOL), Salina



Have you visited [lwml.org](http://lwml.org) lately?

Do you need .....

- ⇒ Ideas for Gifts from the Heart for your group or zone — visit the LWML Toolkits webpage, [lwml.org/posts/free-resources/lwml-toolkit-kits](http://lwml.org/posts/free-resources/lwml-toolkit-kits), for a list of kits.
- ⇒ Spring resources for your meeting — the LWML Spring Resources webpage, [lwml.org/spring](http://lwml.org/spring) has devotions, litanies/responsive readings/short programs, Bible studies, skits, crafts, and more, all with a spring theme.
- ⇒ Help with leading your group or zone — new resources are available to help you serve as a leader on the Leader Development webpage, [lwml.org/developing-leaders](http://lwml.org/developing-leaders).

There are so many resources on the LWML website — take time to discover something new!

LWML Kansas District Reminders:

Please send group and zone officer updates to Brenda Piester, Directory Manager, [directory@kansaslwml.org](mailto:directory@kansaslwml.org)

Prayer requests, that you'd like to share with your Kansas LWML sisters, should be sent by email to Mary Schmidt, Prayer Mail Coordinator, [pmail@kansaslwml.org](mailto:pmail@kansaslwml.org)



Are you following the LWML Kansas District Mission Grants progress? A poster telling about each of the grants may be found on the Gospel Outreach page of the LWML Kansas District website, [kansaslwml.org/gospel-outreach](http://kansaslwml.org/gospel-outreach)



### Mission Statement

*Led by the Holy Spirit, the LWML Kansas District will equip women to proclaim Christ, support missions, and serve the Lord with gladness.*