

# The Kansas Sonshine



Volume 80 : Number 3

Summer, 2023

LWML Kansas District

*When Jesus spoke again to the people, he said, "I am the light of the world.  
Whoever follows me will never walk in darkness, but will have the light of life" (John 8:12).*

Over the past couple of years, I've written about some of "Kim's words." The time is now to revisit these words as we look forward to our next biennium. Do you remember them? We started with look, focus, and listen. LOOK to Jesus. FOCUS on Jesus. LISTEN to Jesus. Then came the word FOLLOW, along with the "follow the SON" theme.

**May you find many ways to Serve grace-fully as a Christian full of grace.** Serving might not always be easy or convenient. But when you serve knowing that Jesus is in the lead, you can have the confidence that you are at your best! Your attitude will be full of grace as you follow His command.

**Do so in joyful Obedience, as this is how our Lord has taught us.** Being obedient to His command is our privilege and honor. Spending much time in prayer and asking for guidance to do His will is our duty. Be joyful as you follow His command.

**Fix your eyes on Jesus and set a New focus on Him and not on what we see in the world.** Always have your focus on Jesus. The world has a lot of negativity and wasteful, time-consuming activities. Focus on Jesus' will for you. Maybe it's something new or maybe it's something that needs revisited. Whatever needs focus should always begin anew with Jesus and end with an obedient attitude as you follow His command.

As we look back, I wrote the following thoughts on Joyful Obedience.

Joy is a gift of the Holy Spirit who empowers us to do His will. It might not be perfect timing for us, but God will somehow give us the time to do His calling. NO more excuses of "I don't have time." God will also give us the means to accomplish those callings. NO more excuses of "I don't know how." Go ahead and step out of your box and be a leader! God will be your biggest fan the entire time. He will guide you, teach you to be a strong leader, and provide people to assist you as you joyfully obey and follow Him.

LOOK, FOCUS, and LISTEN. Is God calling you to be a leader for Lutheran Women in Mission? Is He choosing **you**? Yes, the time has come for us to seek the next biennium's leaders. Please prayerfully consider serving your group, zone, district, or national LWML in one of the many positions available. Yes, you do have time. Yes, you do know how. **All** of us are leaders, in our own unique ways. If someone like me, with all my SQUIRREL MOMENTS, can do this, then any of you can too! For it's by His grace that we are given the gift of servitude.



Kim Burdett  
District President



Be sure to check out these pages ...

Counselor's Corner .....page 2  
Christian Life Retreat Brochure .....page 5  
Dates to Remember .....page 19  
2024 LWML Kansas District Convention Invitation .....page 12

2024 LWML Kansas District Convention Information... page 13  
Special Congratulations ..... page 18  
What's Your 80? ..... page 18  
Zone and Group News..... page 14

## COUNSELOR'S CORNER

Rev. Michael Schmidt | Pastoral Counselor

*<sup>44</sup>Then [Jesus] said to them, "These are my words that I spoke to you while I was still with you, that everything written about me in the Law of Moses and the Prophets and the Psalms must be fulfilled." <sup>45</sup>Then he opened their minds to understand the Scriptures (Luke 24:44–45).*

To understand the Bible, we need to see it as a book about Jesus. It reveals who He is. It shows us that He loves us and He has gone to great lengths to save us.

As we read through the Bible, and especially the Old Testament, we might be tempted to see it as a book of heroes. We might say, "Look how faithful they were. We should be that way too!"

- Noah listened to God and built an ark.
- Abraham listened to God and was willing to sacrifice Isaac.
- Moses was faithful and led the Israelites out of slavery from Egypt.
- Joshua was faithful and led the Israelites into the Promised Land.
- Shadrach, Meshach, and Abednego were faithful and brave, even to the point of being thrown in the fiery furnace.
- Daniel was faithful to God, even to the point of being thrown into the Lion's Den.

But not all of the stories of the Bible are of faithful people. The Bible is very honest about people's failures. In those stories, we learn what not to do, and we also learn that we should repent when we sin.

- David stole another man's wife, and then had him killed — sins of which he repented.
- Peter denied knowing the Lord — sins of which he repented.

But if we interpret the Bible in this way only, we would be turning it into a book about us, about what we should and should not do. To do such a thing would be a Law interpretation.

To interpret the Bible in a Gospel way is to see Jesus at the center of it all. Let me give you some examples.

- Marriage is also a picture of Christ and His bride, the church (Revelation 19:7).
- When God makes Eve from Adam's rib, it's a picture of Christ and the church. The blood and water that flows from Christ's side while hanging from the cross is the creation of the church (1 John 5:6–8).
- Noah's Ark (1 Peter 3:21) and the crossing of the Red Sea (1 Corinthians 10:2) is a picture of Baptism.
- The binding of Isaac is a picture of God sacrificing His Son.
- Just as Moses led the people of Israel out of slavery, so Jesus leads us out of the slavery of sin.
- Just as Joshua led the people of Israel into the Promised Land, so Jesus leads us to heaven.
- The fiery furnace is a picture of Jesus saving us from the fires of hell.
- Daniel and the Lion's Den is a picture of Jesus saving us from the roaring lion, Satan.

In a world where the older is usually blessed over the younger, several times in Scripture this is reversed: Cain and Abel, Ishmael and Isaac, Esau and Jacob, Manasseh and Ephraim. Why? Because Jesus, the second Adam, is much greater than the first Adam (see Romans 5:12–21).



To understand the Bible in the way of the Gospel is to see Jesus in it ... all of it!

Rev. Michael J. Schmidt  
Pastor at St. Luke's Lutheran Church  
Manhattan, Kansas

## CARING SERVICE

Betty Amey | VP of Caring Service

---

The Kansas Assembly of Leaders (KAOL) is right around the corner, Saturday, July 15. KAOL is not just for officers but anyone who has leadership possibilities. It would be wonderful if each zone could send at least one person particularly interested in service projects. The more people we have in our small group discussions, the more ideas are shared.



Vacation Bible School and youth leaders are always looking for worthwhile projects. Consider teaming up with an LWML group, wearing purple of course, for an hour or two of service in the community. Projects might include baking cookies for police officers or firefighters, or cleaning up a yard for an elderly member, the church grounds, or a community charity. Young people can learn to cut quilt squares, teens can learn to sew, and the quilting group can finish the quilt.

Planning is underway for the LWML Kansas District Convention in 2024. Watch future *Sonshine* editions for our Gifts from the Heart projects at the convention. We already know that we will be collecting eye glasses for Most Ministries and we continue to collect stamps for the Texas Stamporee project, which provides funds for shipping quilts to Lutheran World Relief. Consider asking if you can have a collection box for eyeglasses and stamps at a convenient location in your church. Look for the article about MOST Ministries and eyeglass clinics in the summer issue of the *Lutheran Woman's Quarterly*.

Please continue to send service project photos and articles to the *Sonshine*. We are all blessed by the sharing of ideas.

## ARCHIVIST/HISTORIAN

Marie Roth

---

In 1967, LWML Kansas District began their support of LeadaChild, formerly Children's Christian Concern Society (CCCS). At that time, Edie Jorns was the speaker for the LWML Mission Tour. Funds raised on that tour were used to build the Lutheran Home for Students in Zacapa, Guatemala. In 1993, after 25 years of support, the spring mission tour included many Kansan LWML members who had traveled to Guatemala and Honduras to support the mission work. LWML Kansas District continued to support the mission through several mission grants. Today, LeadaChild has provided a Christian education to hundreds of thousands of children in five regions across the world.



## DISTRICT ENDOWMENT COMMITTEE

Eden Keefe | Committee Member

---

The Endowment Fund Committee, in collaboration with the Executive Committee, proposed a revision to the LWML Kansas District Gift Acceptance Policy. The recommendation is that undesignated cash gifts of \$500 or less be deposited in the God's Gracious Gift Fund (GGGF).

Undesignated cash gifts of more than \$500 but less than \$5000 will be referred to the Executive Committee for determination of where it will be deposited.

Undesignated cash gifts of more than \$5000 are deposited in the LWML Kansas District Endowment Fund.

## CHRISTIAN LIFE


Sara Deepe | Christian Life Committee Member

We live in a society that is fixated on being happy. The pursuit of happiness is in our founding documents. Songs like “Happy” by Pharrell Williams and “Don’t Worry, Be Happy” by Bobby McFerrin have topped the pop music charts. *The Happiness Project*, by Gretchen Rubin, was a New York Times bestseller book and has spawned a podcast, website, and extensive merchandise collection. Disney has convinced us that *happily ever after* is a reasonable expectation. But is it?

One of the definitions of happiness I found is tied directly to good luck — people are happy because something external gave them a positive feeling. According to Meg Bucher’s article on the *crosswalk.com* website, “Happiness is a reaction to something great. Joy is the product of someone great.”<sup>1</sup> It’s a gift of the Holy Spirit!

Want to learn more about living joyfully? Join us November 10–11 at the DoubleTree by Hilton Wichita Airport, Wichita, Kansas. Author Sharla Fritz will lead us through *Continuous Joy*.

<sup>1</sup> Meg Bucher, *The Beauty of Speaking Both Joy and Happiness in Christ*, *crosswalk.com*, July 27, 2020, [crosswalk.com/faith/spiritual-life/the-beauty-of-seeking-both-joy-and-happiness-in-christ.html](https://crosswalk.com/faith/spiritual-life/the-beauty-of-seeking-both-joy-and-happiness-in-christ.html).



**REGISTER for the *CHRISTIAN LIFE RETREAT* today!**

The brochure and registration form may be found  
on [page 5](#) of this publication.

## DISTRICT PLANNER

Eden Keefe

As you prepare for your fall meetings and events – or even begin planning for 2024 – consider including the Kansas District mission statement and Primary Focus Areas in your publicity or agenda! It’s a great way to unify individual members and groups in our district and solidify the reason we meet and serve.

Led by the Holy Spirit, the LWML Kansas District will equip women to proclaim Christ, support missions, and serve the Lord with gladness.

### 2022–2024 Focus Areas

#### PROCLAIMING CHRIST

*Declare his glory among the nations, his marvelous works among all peoples! (Psalm 96:3).*

#### EQUIPPING WOMEN

*Now may the God of peace... equip you with everything good that you may do his will (Hebrews 13:20–21).*

#### SUPPORTING MISSIONS

*And he said to them, “Go into all the world and proclaim the gospel to the whole creation” (Mark 16:15).*

#### SERVING OTHERS

*As each has received a gift, use it to serve one another (1 Peter 4:10a).*





# Continuous Joy



*Rejoice always, pray without  
ceasing, give thanks in all  
circumstances; for this is the will  
of God in Christ Jesus for you.*  
1Thess. 5:16-18

Enjoy a relaxing weekend of  
connecting with old friends  
and meeting new ones.

ENJOY MUSIC

MEDITATE IN  
GOD'S WORD

LIGHTEN YOUR SPIRIT  
WITH LAUGHTER

WIN PRIZES

The LWML Kansas District  
Store will have items available  
for your shopping enjoyment.



***Lutheran Women  
in Mission  
Christian Life Retreat***

**Featuring  
Author  
Sharla Fritts**



**November 10-11, 2023  
Double Tree by Hilton  
2098 Airport Road  
Wichita Kansas  
Sponsored by the  
LWML Kansas District**



Sharla Fritz has been described as an amazing, eye-opening speaker and author. Her books, *Measured by Grace*, *God's Relentless Love*, *Enough for Now*, *Waiting*, *Soul Spa*, *Divine Design*, and *Bless These Lips*, have given thousands of women the tools to dig into Scripture and experience a transformation of their attitudes and heart. With light-hearted stories and thought-provoking applications, she makes Bible study fun and uplifting.

Sharla's articles have appeared at *iBelieve.com*, *encourage.com*, *The Mudroom*, *The Redbud Post*, *Today's Christian Woman*, *Just Between Us*, and *Lutheran Woman's Quarterly*.

Stitching her messages with humor and honesty, Sharla speaks to hundreds of women each year at retreats, luncheons, and mom's groups.

Sharla makes her home in the Chicago area where she is also a pastor's wife, mother, grandmother, musician, and confirmed chocoholic. If she isn't sitting at her piano or computer, you might find her stalking fabulous fashion finds at the local resale shop.

## AGENDA

### FRIDAY ~ November 10

— *Dinner on your own before the event starts* —

5:00 p.m. Registration Opens, check into rooms / Shopping Open until 6:30 p.m.

6:30 p.m. Welcome / Session I

7:30 p.m. Evening Prayer Service

8:30 p.m. Fellowship

### SATURDAY ~ November 11

7:15 a.m. Registration Opens

7:30–8:30 a.m. Breakfast provided  
Shopping Open until 9:00 a.m.

9:00 a.m. Welcome / Session II

11:00 a.m. Break  
Shopping Open until 12:30 p.m.

11:30 a.m. Lunch Served

12:30 p.m. Session III

2:15 p.m. Closing Thoughts

*The LWML Kansas District Christian Life Committee would like to thank an anonymous donor for her contribution toward this year's retreat expenses. Thanks to her kindness, the registration fees for the 2023 retreat remain at the 2021 rates! Praise the Lord for His faithful servant's generosity!*

Name: \_\_\_\_\_  
Address: \_\_\_\_\_  
City: \_\_\_\_\_ Zip: \_\_\_\_\_  
Phone: \_\_\_\_\_  
Email: \_\_\_\_\_  
Home Church: \_\_\_\_\_  
Special Needs: \_\_\_\_\_

#### REGISTRATION:

(PLEASE CHECK YOUR CHOICES AND  
ENCLOSE AMOUNT ACCORDINGLY)

Hotel Room, Meals & Activities for  
One Great Price!

*Rooms are Double w/Double Beds*

- ☐ 1 person/room \$170.00  
☐ 2 persons/room \$115.00 per person  
☐ 3 persons/room \$90.00 per person  
☐ 4 persons/room \$82.00 per person  
☐ I plan to attend the retreat, but will not stay at the hotel. Registration cost: \$55.00  
 Includes Breakfast and Lunch

**PLEASE ADD \$10 if postmarked AFTER  
September 29, 2023**

\* I have a roommate/s: (Please List)

\_\_\_\_\_ The Committee may assign me a roommate.

#### Lunch Choice (choose one)

\_\_\_\_\_ Steak Medallion Salad (w/ bleu cheese  
crumbles, onion crisps, field greens, red onion  
vinaigrette)  
 \_\_\_\_\_ Italian Chicken Sandwich (w/ prosciutto,  
fresh basil, fresh spinach, tarragon mayo on  
ciabatta)

**Make checks payable to  
LWML Kansas District.**

Please send registration form with payment to:  
Heather Rolf  
928 Wayside Road  
Westphalia, KS 66093

# COMMUNICATION

Kris Osler | VP of Communication



Are you receiving Mites and Missions Monday?

The Mites and Missions icon resembles one purple and one gold M & M. I created it in memory of a wonderful friend and mentor in the LWML, Marlene Lorenz. For many years Marlene and her dear friend Mary Schmidt were well known in the LWML Kansas District as the M & Ms. Throughout their years of creating together, they joyfully shared fun and memorable messages about the importance of collecting mites and supporting missions.

Marlene was my friend and a great mentor in our local group. A love of Jesus and enthusiasm for His Word exuded from her. She was a positive influence to all women she came into contact with, starting with her own daughters, Eden Keefe and Elise Lorenz-Cleary, both of whom have been active members of the LWML in various capacities for most of their adult lives. Each serve the Lord with gladness because of the great influence of their sweet mom, Marlene, as well as their loving dad, Daryl, who certainly appeared to enjoy every moment of the Milwaukee Convention as Eden was elected president!

I was privileged to be the recipient of Marlene's influence and enthusiasm for a time. We lost her too soon, but her legacy lives on in Eden, Elise, me, and so many others whom she touched through the M & Ms skits that she and Mary wrote and performed, Bible studies she led, district committees she served on, YWRs she mentored (including President Kim) and countless other ways.

How rich is the legacy one faithful woman can leave! Marlene's mentoring showed me how sharing a genuine love of the Savior through our daily lives can impact the spread of the Gospel.

We can all mentor young women in Christ. The LWML provides some wonderful opportunities! Look for them and enjoy the moments!

Blessings in Christ!

To sign up for **Mites and Missions Monday** email blasts, click [here](#) or visit the Communication page at [kansaslwml.org](https://kansaslwml.org), scroll down to the Electronic Delivery section; the link to the sign-up form is right under the social media listing.



## **LWML Kansas District is searching for a Public Relations Director! Could it be YOU?**

The purpose of this new special appointed position is to create a consistent message about LWML, heighten the awareness of its mission, and enhance LWML visibility to all women of the Lutheran Church—Missouri Synod (LCMS). Some of the duties will be to seek out and represent LWML at various LCMS conferences and events (some travel involved); maintain a highly visible social media presence,



including working with our web manager to make sure our website is current and inviting; manage email blasts; be a liaison to the LCMS Kansas District; and invent ways to promote LWML. If this sounds like something you're interested in, please contact LWML Kansas District President Kim Burdett at [president@kansaslwml.org](mailto:president@kansaslwml.org).

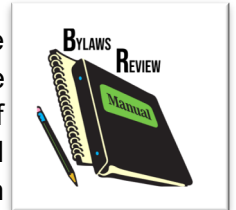
President Kim is just waiting to talk to YOU!

## ORGANIZATIONAL RESOURCES

Christy McCombs | VP of Organizational Resources

Have you ever visited the Organizational Resources page on the LWML Kansas District website? It is a treasure trove of resources and information. A few of the most used resources that can be found on the page are *Expense and Remittance Vouchers*, *YWR applications for conventions*, and the *Lutheran Women's Quarterly and Website Maintenance Fee Remittance Form*. There is a Group Resources tab where you can find program planning helps for your group meetings and events, as well as officer and committee resources. The district Leadership Guidelines were recently updated and can be found under the District Resources tab. The Leadership Guidelines are an excellent resource for all Kansas District women who would like to know more about the role of district officers, departments, and committees. Come check us out at [kansaslwml.org/organizational-resources](https://kansaslwml.org/organizational-resources).

Zones, keep up the good work with the bylaw review process! A couple of zones have ratified or are close to ratifying updated bylaws. Zone Presidents, if your zone's bylaws have not been reviewed yet this biennium, now is a good time to locate the latest digital copy of the zone's bylaws. That way, you are prepared to email the bylaws to the Organizational Resources Chair, Carol Olson, when requested. Coming up on the Bylaw Review Rotation Schedule is the Linn Zone for July and August. The Northwest Zone bylaws will be up for review in September and October. The review process is important so that district and zone bylaws are in line with the national LWML bylaws. This is especially true for bylaw reviews that occur after the LWML convention this June.



## CHURCH WORKERS IN MISSION (CWIM)

Joyce Duitsman | CWIM Coordinator



### **Pastors**

Rev. Calvin Luttinen, Risen Savior, Wichita, installed on March 26, 2023

Rev. Chris Gerdes, Immanuel, Netawaka, installed on April 16, 2023

### **Teacher**

Hannah Christian, Hope, Shawnee, installed on April 2, 2023

A warm welcome to you from LWML Kansas District! We're very happy you're here!

### **Ideas for supporting church workers in your group or zone:**

- \* Encourage church workers by expressing your appreciation and concern for their well-being. *Send a card!*
- \* Provide local support for pastor's travel and/or housing at LWML events.
- \* Celebrate Church Workers Appreciation Month by using the resources at [lwml.org/church-workers-in-mission](https://lwml.org/church-workers-in-mission).
- \* Celebrate National Lutheran Schools Week in your congregation. *If your congregation does not have a school, pray for Lutheran schools located in your zone or district!*

Visit the [LWML Church Workers in Mission \(CWIM\) webpage](https://lwml.org/church-workers-in-mission) for more ideas to welcome new church workers in your congregation.



## GOSPEL OUTREACH

Julie Hatesohl | VP of Gospel Outreach

**Hear ye! Hear ye!** Mission Grant/God's Gracious Gift Fund (GGGF) applications are due **September 1, 2023!** Applications are available through the [LWML Kansas District website](#) in PDF and online formats.



Some people have been asking about the difference between a Mission Grant vs. God's Gracious Gift Fund (GGGF).

God's Gracious Gift Fund (GGGF) grants are funded from donations designated to the GGGF account. The funds are held and invested through Lutheran Church Extension Fund (LCEF). Amounts in excess of \$10,000 in the GGGF account as of May 31 of odd-numbered years (including principal and interest) will be disbursed following each biennial convention. Grant recipients selected by the delegates must complete their projects during the biennium.

Mission Grants, on the other hand, are paid through Mite and Mission Grant donations received by the LWML Kansas District throughout the biennium. The Mission Grant proposals selected by the delegates at the LWML Kansas District Convention are ordered based on the highest number of votes received. These grants are funded throughout the biennium when the Executive Committee determines that funds are available.

As a general rule, if the project/event has a set date (e.g. time-sensitive), it would be recommended to submit as a GGGF. An example would be a request for funds for an upcoming church centennial celebration that is being planned and funds are needed prior to the event.

If you are unsure which grant to apply for, the application form does have an 'either' option. The Gospel Outreach Committee will work with you to ensure the correct grant is requested.



In other Gospel Outreach (GO) news ... the Day of Prayer offering recipient for April 1, 2023 through March 31, 2024 is the Joint Parish Agreement — Herington, Kansas. Three churches in the Herington, Kansas community are in need of resources to grow their congregation. For more information about this project, please visit the LWML Kansas District website, [kansaslwml.org/gospel-outreach/#dayofprayer](https://kansaslwml.org/gospel-outreach/#dayofprayer).

**SPOILER ALERT:** For those attending the Kansas Assembly of Leaders (KAOL) in Wichita, July 14–15, 2023, get ready for the **PASTORAL MITE OFFERING CHALLENGE**. Yes, our very own pastoral counselors, Pastors Michael Schmidt and John Werner, will compete for your Mite Offerings! Get your change collected and your phones/cameras ready!

The JOY of presenting the 2022–23 Day of Prayer offering to Fairmount Ministries, Wichita, Kansas!

TO GOD BE  
THE GLORY



## FINANCIAL SECRETARY

Kathryn Richard

Thanks to your generous giving, our Mite donations continue to be ahead of our goal for this point in the biennium. Summer is upon us, and many groups may not be meeting right now, but it is not the time to let up on our giving. Prayerfully consider ways to encourage mite giving when your group is not meeting.

Did you know you can download a Mite Challenge Calendar for each month from the LWML website ([lwml.org/posts/free-resources/mite-challenge-calendar](http://lwml.org/posts/free-resources/mite-challenge-calendar))? If you've not used such a calendar, now might be the time to give it a try. Or, if you have used one in the past, but have not done so recently, perhaps you might want to consider using one for the summer months. This might be the time to set up a large mite box at your church and encourage church members to help fill it with coins and paper money. Consider other methods you or your group might think of to keep feeding the Mite Boxes during the summer months. Let's keep the mite donations coming so we can continue to stay ahead of our goal!



*Mite offerings may be mailed to Kathryn Richard, Financial Secretary, P.O. Box 314, Arma, KS 66712.*

## SPECIAL FOCUS MINISTRIES

Sarah Kleopfer | VP of Special Focus Ministries

It's not too early to start encouraging young women in your congregations to think about applying to be a Young Woman Representative (YWR) at the 2024 LWML Kansas District Convention in Wichita. Also, you can encourage them to be involved in your local LWML group. Here are some ideas:

1. Relationships. Think about reaching out to a young woman in your congregation and building a relationship with her. This can be as easy as striking up a normal conversation with her, letting her know that you are interested in her and her life.
2. Talk about LWML. Tell her what LWML is and how you have been involved. The more enthusiastic you are about LWML, the more likely it will be that she'll be interested, as well.
3. Don't overwhelm. If she shows interest in being a part of your LWML group, don't overwhelm her and give her too many responsibilities right away.
4. Childcare. If a young woman is interested in being a member of your group, but has young children, help her try to come up with solutions. (Most groups will have women who love to hold the babies or help with little ones!)
5. Be open to new ideas. If a young woman wants to join your group and has "new and different" ideas, don't dismiss them. Listen, and try to incorporate those ideas into your group.
6. Keep asking. If a young woman tells you "no," keep asking. Don't be too pushy, but let her know that you'd still like to have her be part of your LWML group.

The YWR application for the 2024 Kansas District Convention will appear in the fall *Sonshine*. Be on the lookout for it!

*Young Women*  
**IN MISSION**

## HEART TO HEART — SISTERS OF ALL NATIONS

Judy Kolterman | Heart to Heart Committee Member

It's said that an ostrich hides its head in the sand to avoid a dangerous situation. Could we be Christian ostriches at times? Sometimes, we want to hide our personalities, hide from people we don't know, or hide from a situation. But, a better way to face a situation, or someone you don't know, is to lend a hand. Help given to a new neighbor, someone new to your church, or someone going through a hard time, will go a long way to make a new friend. What does this have to do with LWML? A new friend can be introduced to your local LWML group where she will have the opportunity to form more relationships, have a chance for Bible study, and grow in her Christian life. Heart to Heart — Sisters of All Nations encourages you to form new relationships and welcome new women into the LWML.



*Know that the Lord, he is God! It is he who made us, and we are his;  
we are his people, and the sheep of his pasture (Psalm 100:3).*

## GIFTS OF LOVE

Eden Keefe | District Advocate

Faithful stewardship of your estate means keeping up with changes in the world and in your personal life and making sure that your plans are up to date.

- If it has been ten years since the last time you visited your plan, chances are that your family has changed. You might have more children, or grandchildren, that were not named before. To make sure family gifts pass the way you want them to, you need to update your plans.
- Laws can change over time. You also may have moved from one state to another since the last time you created a plan. Powers you grant through a Power of Attorney document may be different now than fifteen years ago. Your attorney needs to review your plan.
- Tax laws change constantly as different political parties move in and out of power. Thirty years ago, your estate might have had to pay federal estate tax if it was valued over \$600,000. Today that number is \$12 Million. Five years ago, you could bequest your IRA to family over their lifetime. Today they must cash it out in ten years.
- Most of us think that ministries with which we are involved will be around forever. But sometimes God's hand closes one ministry while opening another. Does your estate gift plan need to catch up with some of these changes?



Your LWML Gift Planning Counselor can help. Contact Carol von Soosten to start a conversation. Her professional services are free to LWML members and families.

Email: [Carol.vonSoosten@lwnd.org](mailto:Carol.vonSoosten@lwnd.org) Phone: 800-741-4138 [lwmlgiftplan.org](http://lwmlgiftplan.org)

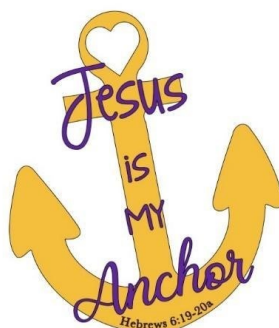


you are invited to the  
**40<sup>th</sup> BIENNIAL CONVENTION**

**Friday, April 12 – Sunday, April 14, 2024**

DoubleTree by Hilton Hotel, Wichita, Kansas

Hosted by  
Linn, Northeast, and Wichita Zones



## **Convention Verse**

*We have this as a sure and steadfast anchor of the soul, a hope that enters into the inner place behind the curtain, where Jesus has gone as a forerunner on our behalf (Hebrews 6:19-20a).*

## **Convention Goal Statement**

With Jesus as the steadfast anchor of our souls, we will:

- Be grounded in His Word
- Celebrate and share our hope in Christ
- Cling to him as we serve in His kingdom

**Please pray for our leaders as we prepare for this convention,  
that God's purposes be fulfilled, as we serve Him and the women of LWML.**



## CONVENTION BANNER INFO

Jill Lowe | Banner Chairman

Letters were sent to each zone president regarding 2024 convention banners. The following is an abbreviated version of that letter. **Please contact your zone president for complete details.**

Once again, each Kansas District zone is invited to create a banner for the LWML Kansas District Convention. Each zone is encouraged to bring their own unique banner to the convention. The banner procession is always an exciting opening to the convention, and all the banners displayed bring joy to the convention hall. Please begin planning now for your 2024 LWML Kansas District Convention zone banner.

General banner specifications are as follows:

- Finished banner size is to be 3' x 5' — although fringe may be longer.
- Banners should be based on the convention theme: *Jesus is My Anchor*, Hebrews 6:19–20a.
- Your zone's name **MUST** be on the front of the banner.
- Place ribbons to tie your banner to the pole on the back of your banner.
- Please attach the banner to a 1" dowel with a screw eye on each end.
- Stands and poles for the banners are provided by the Host Committee.

We will request a photo and information about your banner before the convention. We're looking forward to seeing all your beautiful banners!

## 2024 NOMINATING COMMITTEE

Jill Lowe | Chairman

The District Nominating Committee is seeking nominees to be placed on the ballot for the 2024 LWML Kansas District convention for the following district positions:

- ◆ President;
- ◆ Vice President of Communications;
- ◆ Vice President of Caring Service;
- ◆ Recording Secretary;
- ◆ Financial Secretary.

The deadline for submitting nominations is September 15, 2023. These district offices will be elected by delegates at the 2024 convention in Wichita. We are looking for nominations from your zone, your LWML group, or anyone you may know from another zone that could fill a position. You may also volunteer to fill a position! Please do what you can to help fill the 2024 ballot. All suggestions are welcome. Thank you for your prayers regarding nominees and for prayerful consideration to serve in one of these district offices.



Email Jill at [nominations@kansaslwml.org](mailto:nominations@kansaslwml.org) with possible nominations.

*As each has received a gift, use it to serve one another,  
as good stewards of God's varied grace (1 Peter 4:10).*

## LWML KANSAS DISTRICT ZONE AND LOCAL GROUP NEWS

### *Happy 100th Birthday*

#### **to Gladys Ehm!**

Gladys Ehm has been a member of LWML since the 1960's. She continues to be an active member with the **FIRST LUTHERAN GUILD – LWML, PHILLIPSBURG, KANSAS**, attending meetings and church regularly. On April 16, 2023, Gladys turned 100 years young. A GRAND CELEBRATION took place at the church with many family and friends attending this century milestone. Gladys still lives at home, drives, cooks, bakes, makes quilt tops for our Guild, and the list goes on. Gladys is a *Good and Faithful Servant of Our Lord*, and she has BLESSED our Guild – LWML for many years.

***Thank you, Gladys, for being a true example of a Lutheran Woman in Mission!***



*For the LORD is good;  
his steadfast love endures forever,  
and his faithfulness to all generations (Psalm 100:5).*



President Kim Burdett and Gifts of Love Advocate Eden Keefe hosted LWML display tables at the Older Adult Ministry Conference held at **BEAUTIFUL SAVIOR LUTHERAN CHURCH, OLATHE**, on Saturday, May 6. Charlotte Hundley provided a display on Social Ministry projects. The event was to highlight volunteer service opportunities for older adults.



**Beautiful Savior LWML Display**



**LWML Kansas District Display**



**Gifts of Love Display**

## LWML KANSAS DISTRICT ZONE AND LOCAL GROUP NEWS

The **HUTCHINSON ZONE** Spring Meeting was Saturday, April 15, at Grace, McPherson. The group enjoyed a fabulous mission program featuring Keren, Comfort Dog. Keren is an LCC K-9 Comfort Dog from Immanuel Lutheran, Ellsworth. Top Dog (Carol Kratzer) informed the group of all the ways that Keren serves her community. Carol shared that when Keren is deployed in times of disaster and crisis, she brings comfort to all those affected. The members of Grace served a lovely lunch. The zone collected over \$300 in Mite offerings. Gifts from the Heart items of tissues, toilet paper, paper towels, bedding, and more, were collected for *The Omega Project*, a faith-based drug and alcohol recovery program. We thank God for the generosity of the women of the Hutchinson Zone!



Hutchinson Zone attendees



Carol and Keren



Gifts from the Heart

+++++

The **LINN ZONE LWML** met March 19, at Trinity Lutheran, Hanover, with a total of 46 in attendance. Mr. Paul Yates, executive director of *I've Got a Name* from Lincoln, Nebraska, was our speaker. His organization raises community awareness to amplify the voices of survivors of sex trafficking, and prevent women and children from being exploited. He told us

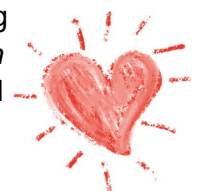


Linn Zone Attendees

how he got involved with the organization and how it has changed his life. He also told about potential signs or behaviors that indicate a person is involved with trafficking. Our ingathering offering of \$317 was given to this organization. A business meeting with elections followed. Cards were made for shut-ins and nursing home residents. The 2023 Fall Event will be at Immanuel, Linn.

+++++

The **NORTHEAST ZONE LWML** had their Spring Event at St. Matthew Lutheran Church, Nortonville, on April 15, 2023. There were 19 LWML members and Pastor Lally present. The zone delegate to the LWML Convention gave a wonderful talk on the upcoming convention. The main speakers were from the *Pantry of Hope* and *Joyful Hearts with Helping Hands*, which are both located in Nortonville, and help many families with food and clothing, all free of charge. After lunch, both facilities were open for tours.





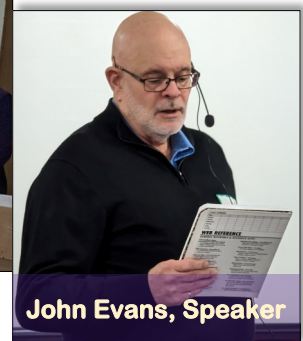
## LWML KANSAS DISTRICT ZONE AND LOCAL GROUP NEWS

Psalms 146 teaches us that God watches over the sojourners and upholds the fatherless and the widows. These are some of the people ministered to by Orphan Grain Train (OGT). The **LINCOLN ZONE** Spring Rally was held at Concordia Lutheran, Hoisington, on March 25, for an OGT event with 40 attendees. Lisa Brack, Concordia LWML group president, welcomed everyone. Opening devotions were led by Lincoln Zone Counselor, Rev. Chris Craig, Bethlehem, Sylvan Grove. John Evans, OGT, Wichita Branch Manager, spoke of the mission of OGT and how the Wichita facility works with the OGT headquarters in Norfolk, Nebraska. An offering of \$426 was collected for OGT to help with shipping costs.

Gifts from the Heart items were for OGT layette kits; a servant event assembled 33 kits using the items collected. Items not used in kits were given to the Wichita OGT facility. Many groups brought quilts, hygiene kits, and clothing for OGT. Other items collected were stamps for LWR, religious materials for the LLL State Fair Booth, and used suitcases for foster care.

A catered lunch was enjoyed by all. The business meeting began with singing and reciting the LWML Pledge. Zone bylaws, including bylaws revisions, the newly created standing rules, and the Crisis Management Team submissions, approved by the LWML Kansas District Organizational Resources Committee, along with new documents, were approved and accepted. Zone President Shelly Keller and Secretary Marj Aufdemberge will continue in their positions for two more years. Mary Dohl, LWML Kansas District Recording Secretary, representing the district Executive Committee, offered greetings and gave the district president's report.

Group reports were given, everyone was reminded of upcoming zone meetings and assignments, and encouraged to talk with young women in their churches about completing a YWR application for the 2024 convention. In addition to the OGT offering, the Mite offering totaled \$293. The Concordia Group distributed door prizes, officers were installed, and the Spring Rally concluded with the Lord's Prayer.



*Now therefore fear the  
Lord and serve him in  
sincerity and in  
faithfulness* (Joshua 24:14a).





## LWML KANSAS DISTRICT ZONE AND LOCAL GROUP NEWS

The **MANHATTAN ZONE** met on Saturday, April 22, 2023, in Wheaton. The event speaker was Eden Keefe, who provided ways to use our imagination to remember people in our prayers, and capture key points of our daily devotions through visual prompts and color. Kits were provided to each attendee by a Thrivent Action Team grant, and included colored pencils, pencil sharpener, eraser, a marker, and a highlighter. A variety of cards and bookmarks were also available. The Mite offering challenge was a photo contest of landscapes (the beach scene won!). Gifts from the Heart items were for Phil's Friends, and will be taken to the LWML (national) Convention in Milwaukee. Special Focus Ministry Committee provided a skit, *The Christian Ostrich*. For the business portion of our event, LWML Kansas District President Kim Burdett gave a district update; officers were elected; and the zone voted to approve the Flint Hills LWML Group, a new local group to the Manhattan Zone. The Fall Event will be held September 30, 2023, at St. John's in Alma.



**Pastor Schmidt's famous selfie! See any more pastors?**



**Meet the NEW Flint Hills LWML Group!**

*Editor's Note: Pastor Grimm, Pastor Fries, Pastor Schmidt, and Pastor DeGiovanni all attended the Manhattan Zone event. Our district is very blessed by all our LWML-mindful pastors!*

+++++



The **SOUTHEAST ZONE** Spring Event was held Sunday, April 23, 2023, at Good Shepherd, Erie. The opening included hymn singing, followed by Vespers led by Pastor Caleb Stoeber. Elaine Engleman presented a Mite Challenge. President Dodie Copley conducted the business meeting, including officer and standing committee reports. Special LWML Kansas District Executive Committee guests were Kim Burdett, Eden Keefe, and Cathi Temple. Elections were held with Sharon Daugherty, president, and Becky Franklin, treasurer, elected. Dodie Copley will complete Sharon Daugherty's office as vice-president. The ladies of Erie served an amazing charcuterie board which covered a full table for our snack break. Afterward, Donna Williams LCMS Kansas District Disaster Response Coordinator shared what her job entails, especially working with Lutheran Early Response Team (LERT). The afternoon concluded with the blessing of the LWML Kansas District banner for national convention, the ingathering of first aid supplies for LERT, installation of officers, and closing devotions by Zone Pastoral Counselor Pastor Jennings.



**Yummy Snacks!**

## LWML WHAT'S YOUR 80?

*Editor's Note: We will continue to publish "What's Your 80?" information and photos that your groups or zones submit through the Fall 2023 issue of The Kansas Sonshine (articles due September 5, 2023). Email Sherri at [sonshine@kansaslwml.org](mailto:sonshine@kansaslwml.org) with your submission or with questions.*

### WHAT'S YOUR 80? CELEBRATING 80 YEARS OF LWML

*The following article may be found in the Summer 2023 Lutheran Woman's Quarterly, the official publication of LWML.*

The **LWML OF ST. PAUL LUTHERAN CHURCH, PRESTON**, gave 80 Christmas Arch books to children at two area events on December 10, 2022. Young attendees at the *Community Christmas Breakfast in Luka, Kansas*, were given a book. In the afternoon, the youth of St. Paul were in a float for the *Turon, Kansas, Christmas Parade*. Older youth walked alongside the float and handed out books. Included inside a ziplock bag with the book were a candy cane, an invitation to worship, and Advent information.



St. Paul, Preston, Christmas Parade Float, Turon, Kansas



80 + 80 +



*Congratulations*

to

*Eden Keefe*

upon election to the office of LWML President!

God's blessings to these Kansas Women in Mission serving as LWML officers:

Brenda Piester, Recording Secretary; Susan Brunkow, VP of Christian Life;

Karen Morrison, VP of Gospel Outreach.

*Please keep these women in your prayers!*

Would you like to serve the Lord on an LWML committee?? Complete the appropriate form as listed:

- ♥ Find the LWML (national) Personnel Resource Form at [lwml.org/get-involved](http://lwml.org/get-involved).
- ♥ Find the LWML Kansas District Committee Appointment — Personnel Profile Form at [kansaslwml.org/organizational-resources](http://kansaslwml.org/organizational-resources), under the FORMS bar.

## DATES TO REMEMBER

### 2023

July 13–15	EC Meeting, BOD Meeting, KAOL, Holy Cross, Wichita
August 12	Convention Planning Meeting, Manhattan
September 15	Nominations due to Jill Lowe, Nominating Committee Chairman
October 6–7	EC Meeting, Herington Retreat Center
November 10–11	Christian Life Retreat, DoubleTree Hotel, Wichita Airport

### 2024

February (day TBA)	EC Meeting (location TBA)
April 11	EC and BOD Meetings, Wichita (location TBA)
April 12–14	LWML Kansas District Convention, Wichita, Kansas

**Deadline** for articles for the fall issue of *The Kansas Sonshine* is September 5; publish date is early October. **PICTURES WANTED** — If you have one or two photos from the 2023 LWML Convention, in Milwaukee, that you'd like included in the next *Sonshine*, you may email them. Pictures will be included if there is room! Email information to [sonshine@kansaslwml.org](mailto:sonshine@kansaslwml.org).

**District Prayer Mail** To be included on the **District Prayer Mail** (P-mail) group listing, please send your name and current email address to Velma Bass, [pmail@kansaslwml.org](mailto:pmail@kansaslwml.org). Requests, thanksgivings, and joys are distributed in "blind copy" manner so that your email address is not shared.

**Contact information changes** for groups and zones should be emailed to Brenda Piester at [directory@kansaslwml.org](mailto:directory@kansaslwml.org).

## MISSION GRANTS

**Be sure to stay up-to-date on the progress of  
LWML Kansas District 2022–2024 Mission Grants.  
Print the Mission Grants Poster at  
[kansaslwml.org/gospel-outreach](http://kansaslwml.org/gospel-outreach).**

Visit the LWML website, [lwml.org/2023-convention](http://lwml.org/2023-convention),  
for the video and list of mission grants adopted at the  
2023 LWML Convention, Milwaukee, Wisconsin.



### Mission Statement

*Led by the Holy Spirit, the LWML Kansas District will equip women  
to proclaim Christ, support missions, and serve the Lord with gladness.*