

# The Kansas Sonshine



Volume 79 : Number 1

Winter, 2022

LWML Kansas District

*When Jesus spoke again to the people, he said, "I am the light of the world. Whoever follows me will never walk in darkness, but will have the light of life" (John 8:12).*

## A New Focus!

**Fix your eyes on Jesus and set a New focus on Him and not what we see in the world.** Always have your focus on Jesus. The world has a lot of negativity and wasteful time-consuming activities. Focus on Jesus' will for you. Maybe it's something new or maybe it's something that needs refocusing. Let it begin anew with Jesus and end with an obedient attitude as you follow His command.

We all have our routines. It seems our schedules revolve around those things we do without thinking. It is convenient because changing our routines causes us to stop and think about what we're doing and refocusing. Do you always sit in the same place at church? How many times do we consider ourselves "just going through the motions"? Is it time to shake things up? Let's start with a new focus and look at things differently.

How can you follow with a new focus? First of all, don't be stuck in your ways. Yes, I said it. Go ahead and give the new idea a try. Just because it's never been done that way before doesn't mean it's not worth trying. I remember a phrase that came about during Past President Velma Bass' term. It was "Change ... oh my!!!!!" I'll bet many of you finished that before I had it typed. Change is inevitable so we might as well grasp hold and go for the ride as it will most likely give us a new focus.

We can also focus on our own identity. Following Jesus sometimes means we are not following "the crowd". Being our own person and focusing on Jesus, and not on society, takes a lot of concentration. We need to block out the noise of our televisions and the noise that social media creates in our heads. We need to focus on hearing, saying, and doing only those things that God would command.

The LWML Kansas District Executive Committee begins their meetings with a Bible study titled "Focus Lost ... Focus Restored" by Rev. John Heckmann. (It's a FREE downloadable study on the LWML website. You can find it [here](#).) It's a study on how 14 different Bible personalities lost their focus, but had it restored. Many times I end the study thinking, "I've never looked at it that way".

Whatever it takes -- find your focus. "Change ... oh my!" Thanks Velma!!

**Follow the SON!** With a **New focus.**



Kim Burdett  
District President



Be sure to check out these pages ...

Counselor's Corner.....[page 2](#)  
Convention Bus Info.....[page 7](#)  
Convention Shirt Order Form.....[page 8](#)  
Dates to Remember.....[page 14](#)  
2022 Day of Prayer Service Info.....[page 5](#)

2022 LWML Kansas District Convention Info.....[page 7](#)  
Mission Grants Poster.....[page 3](#)  
Upcoming LWML Group Events (new section).....[page 13](#)  
Zone and Group News.....[pages 10-12](#)

## COUNSELOR'S CORNER

Rev. Michael Schmidt | Pastoral Counselor

### Jesus Before His Birth

Christmas is the celebration of the birth of Jesus. (Da! Thank you, Captain Obvious!) But, this isn't the first time the Second Person of the Trinity appears on the Biblical scene. You might be familiar with the Trinity interacting with itself at creation, saying, ... *"Let us make man in our image, after our likeness"* (Genesis 1:26a). But what is Jesus doing between creation and his conception/birth? A quick overview displays that He was very active throughout the Old Testament.

The angel of the Lord is Jesus! The angel of the Lord does miracles, speaks for God, and is called God. So that we don't confuse the angel of the Lord with other angels, maybe we should call Him the Messenger of the Lord—or maybe even the Word of the Lord.

A quick search reveals that the angel of the Lord appears to Hagar in Genesis 16. The angel of the Lord called to Abraham from heaven when Abraham is about to sacrifice Isaac in Genesis 22. *And the angel of the Lord appeared to him [Moses] in a flame of fire out of the midst of a bush* (Exodus 3:2a). To make sure we know that the angel of the Lord is God, the text tells us, *Then the Lord said* (Exodus 3:7a), and *God said to Moses, "I AM WHO I AM"* (Exodus 3:14a). The angel of God led Israel out of Egypt and through the wilderness in the pillar of cloud by day and a pillar of fire by night in Exodus 14:19-20 and 24. The angel of the Lord appeared to Balaam and his donkey in Numbers 22, and ... *Then the Lord opened the mouth of the donkey* (Numbers 22:28a). The angel of the Lord appeared at the beginning of the book of Judges; see Judges 2:1-4. The angel of the Lord called Gideon into His service in Judges 6. The angel of the Lord interacted with Samson's parents, prophesying Samson's birth and instructing them how to raise him (as a Nazirite) in Judges 13. In 1 Chronicles 21, when King David conducted a census and his actions "displeased" the Lord (v. 7), the angel of the Lord inflicted a pestilence (v. 14) or plague (v. 17) on Israel for three days. *And David ... saw the angel of the Lord standing between earth and heaven, and in his hand a drawn sword stretched out over Jerusalem* (1 Chronicles 21:16a). The angel of the Lord ministered to Elijah in the wilderness before sending him to Mt. Horeb in 1 Kings 19:7. He later instructed Elijah ... *to meet the messengers of the king of Samaria ...* (2 Kings 1:3). When the Assyrians were set to attack Jerusalem when Hezekiah was king, ... *the angel of the Lord went out and struck down 185,000 in the camp of the Assyrians* (Isaiah 37:36a).

Other stories where the Lord is seen would include the Garden of Eden, when Adam and Eve ... *heard the sound of the Lord God walking in the garden in the cool of the day* (Genesis 3:8a); when the Lord visited Abraham with two angels in Genesis 18; when Jacob wrestled with an unnamed man in Genesis 32; and when Joshua interacted with ... *the commander of the Lord's army* (Joshua 5:15a). When God gives the Ten Commandments, Moses and Aaron ... *saw the God of Israel* (Exodus 24:10a), and *they beheld God, and ate and drank* (Exodus 24:11b). Two other stories include the call of Samuel, when ... *the Lord came and stood* (1 Samuel 3:10a) before Samuel, and the call of Jeremiah, ... *the Lord put out his hand and touched my [Jeremiah's] mouth* (Jeremiah 1:9).



The angel of the Lord is Jesus before He was born of Mary. And he frequently appeared with body parts, made noise walking, touched people, and stood before people. The point is this: Jesus was intimately involved in the history of salvation. It is His history. Jesus was working out our salvation throughout the Old Testament. And because we are in Christ in our baptism, it is also our history.

# GOSPEL OUTREACH

Janice Cundiff | VP of Gospel Outreach



## 80 DAYS OF THANKSGIVING FOR 80 YEARS OF LWML

The Mission Grant Challenge is still in progress! The challenge is for donors to consider giving an extra gift of thanksgiving designated to the **LWML Kansas District Mission Grants Fund**. The challenge began on Thanksgiving Day, 2021 and continues for 80 days—through Valentine's Day, 2022. These donations are in thanksgiving of 80 years of LWML, and will be used to pay our 8th and final mission grant in the amount of \$8,500.

Be creative! Challenge yourself, your local group or zone, or even your congregation to "Give 80" – 80 quarters, 80 \$1 bills, or maybe even 80 \$5 bills (the purple ones, of course). If donating on the website ([www.kansaslwml.org/giving](http://www.kansaslwml.org/giving)), please designate your donation by choosing **80 Days of Thanksgiving** from the dropdown list. If donating through an app on your smartphone, be sure to use the **new** Vanco Mobile Faith Engagement app (instructions are on the [website](#)). If donating by mail, please indicate **80 Days of Thanksgiving** on your check. Prepare to be blessed!

80 + 80

To keep track of our mission grants progress, download the Mission Grants poster from the Gospel Outreach page ([here](#)) of our website, [www.kansaslwml.org/gospel-outreach](http://www.kansaslwml.org/gospel-outreach). Remember that we have one more grant to pay, in the amount of \$8,500, for the purchase of a stair lift at the Kansas District LCMS Retreat Center in Herington, Kansas. Did you know you can designate your LWML donations to a specific fund? You may do this by selecting the fund as you fill out the form for online donation, or designate on your check if you prefer to mail your donation to the financial secretary. Either way, you are *Serving the Lord with gladness!*

### KANSAS DISTRICT LUTHERAN WOMEN IN MISSION MISSION GRANTS & STUDENT FINANCIAL AID 2020 - 2022

#### BE THOU MY VISION



Hebrews 12:2

- COMPLETED** 1. Orphan Grain Train (\$5,000) -
- COMPLETED** 2. Lutheran Indian Ministries, Haskell LIGHT (\$5,000)
- COMPLETED** 3. Concordia Theological Seminary (\$5,000)
- COMPLETED** 4. Lutheran Bible Translators (\$5,000)
- COMPLETED** 5. TIG Ministries Partnership (\$4,500)
- COMPLETED** 6. KansaSEED, LCMS Kansas District Deaf Ministry (\$5,000)
- COMPLETED** 7. Topeka Lutheran School (\$5,000)
- 8. Kansas District LCMS Retreat Center (\$8,500)

**Fall 2020—Student Financial Aid: \$10,000**

**Spring 2021—Student Financial Aid: \$10,000**

**Fall 2021—Student Financial Aid: \$10,000**

**Spring 2022—Student Financial Aid: \$10,000**

Heavenly Father, thank you for Your vision to support these organizations during this biennium. Watch over them and guide them to do Your work. In Jesus' name. Amen

## FINANCIAL SECRETARY

Kathryn Richard

Mite Offering GOAL 2020-2022 Biennium  
\$145,000

Mite Offerings RECEIVED through 11/30/21  
\$108,028

With four months left in the biennium, as of November 30, \$36,972 is needed to meet our goal, or \$9,243 each month compared to our average monthly mite offerings of \$5,400. We are thankful that several groups have made substantial mite offerings recently which has helped close the gap, but we still have need for increased giving. So in this season of giving, please remember to give to your mite box (or through online giving), perhaps even making an extra gift, if you can.

Join me in praying that God will provide an abundance of mite offerings, just as He provides us an abundance of blessings, so we can share the Good News with our world.

P.S. Did you know that mite offerings fund Kansas District mission grants, student financial aid, operating expenses, and national LWML mite donations? Twenty-five percent of district mite offerings are sent to national LWML.

## ENDOWMENT

Eden Keefe | Endowment Committee Member

---

The LWML Kansas District was blessed to receive an additional \$415 from the Philip E. Ascher Trust. It was invested in the LWML Kansas District Endowment Fund – Mission Grant Projects with the LCMS Foundation.

## CHURCH WORKERS IN MISSION

Joyce Duitsman | CWM Coordinator

---

A warm **LWMLWELCOME** to Pastors and Church Workers new to Kansas!

Rev. David Kahle, Pastor  
Redeemer, Olathe, installed November 21, 2021

Samantha Wagner, Director of Christian Education  
Christ the King, Salina, installed November 7, 2021

Rev. Matthew Durance, Pastor  
St. Peter, Barnes, installed December 5, 2021

Amber Goeglein, Director of Childrens' Ministry  
Christ, Overland Park, installed November 14, 2021

Rev. Kevin DeHope, Pastor  
Prince of Peace, Topeka, installed December 12, 2021



## CARING SERVICE

Betty Amey | VP of Caring Service

---

### Time to Start Collecting!

At each convention, we have opportunity to share the love of Jesus with in-gathering items for Christian charities near the convention site. Those organizations and their needs will be announced in the convention issue of *The Kansas Sonshine* newsletter.

You can start now collecting eyeglasses for MOST Ministries. All types of eyeglasses are accepted as well as individual lenses. They do not use the hard glasses cases because of the extra weight.

You can also start collecting cancelled stamps. We are still supporting the LWML Texas District Stamporee project which uses money earned from the sale of stamps to send quilts to Lutheran World Relief. Stamps should be trimmed with at least 1/4-inch borders. Stamps do not need to be sorted. There are detailed instructions on the LWML Kansas District website on the Caring Service page at [www.kansaslwml.org/caring-service](http://www.kansaslwml.org/caring-service).

It has come to my attention that the chaplain at the Veterans' Hospital in Wichita has had a few requests for the King James Version of the Bible. If you have KJV Bibles that are in **good** shape and that you are no longer using, I can deliver them to the chaplain. Contact me at [caringservice@kansaslwml.org](mailto:caringservice@kansaslwml.org).

In the past we have collected religious devotions for the Lutheran Laymen's League (LLL) booth at the State Fair. LLL does not need materials at this time, but the new Concordia Sunday School program has some very nice booklets of Bible stories that would be wonderful to hand out to the children who may visit the booth with their parents. If your congregation has extras or left over booklets that are in excellent condition, you may bring them to the LWML Kansas District convention.



# COMMUNICATION

Kris Osler | VP of Communication



Happy Thanksgiving! Are you still giving thanks? LWML groups across the nation are! The LWML Kansas District Executive Committee challenged us back in November to celebrate 80 days of thanksgiving for 80 years of LWML by blessing others with 80 “something.”

How fitting it is that this celebration has taken us through the Advent season, the season of hope, as LWML women are women of hope looking forward to eternal life with Christ. This is not a wishful hope, but a confident hope that means we wait *expectantly*.

As the psalmist says in Psalm 5, *In the morning, Lord, you hear my voice; in the morning I lay my requests before you and wait expectantly* (Psalm 5:3 NIV). The psalmist hopes in the Lord, *expecting* answers to his requests. Through Advent, we wait *expectantly* for God’s promises to be fulfilled in Christ.

The 80 Day Challenge has also taken us through the Christmas season, the season of joy. As LWML women, we serve joyfully and we wait *expectantly* for Christ’s return. And as we wait, we give thanks for the many blessings He has given and will continue to give to us every day.

The challenge has now taken us into the New Year, the season of anticipation. As LWML women, we anticipate the great work that God will accomplish through our service and mite offerings. We wait *expectantly* for the day that we can say the final mission grant for the 2020-2022 biennium has been fully paid!

Share your thankfulness for LWML with others during these 80 Days of Thanksgiving. Click on over to the Kansas LWML Facebook page and share what you are thankful for, and, while you are there, share what you are hopeful for as well. If you organize a “thanks project” in your group, take pictures and share them with our *Sonshine* editor, Sherri Rose, by sending them to [sonshine@kansaslwml.org](mailto:sonshine@kansaslwml.org).

Happy New Year! AND Happy Thanksgiving!

## CHRISTIAN LIFE

Nancy Taylor | Committee Chair



**THANK YOU** to everyone who helped make the Christian Life Retreat a success! It was a wonderful weekend filled with “focusing on Jesus” with our guest speaker, LWML Past President Patti Ross, meeting up with old friends from around Kansas, making new friends, and enjoying “in-person” fellowship! We had a great turnout and appreciated shopping at our own LWML store, as well as being able to purchase convention shirts from the Special Focus Ministries Committee. Praise God for the blessing of sisters in Christ!

The **2022 LWML Prayer Service** was written by our very own Pastor Robert Grimm of St. John Lutheran Church, Alma. The service will be available in January as a free download at [www.lwml.org/prayer-service](http://www.lwml.org/prayer-service). Previous prayer services may also be downloaded at the same webpage location. LWML Kansas District recipients of the 2021-22 Day of Prayer offerings, through March 31, 2022, are 4KenyaKids and Redeeming Life Ministries. The 2022-23 Day of Prayer offerings, April 1, 2022 through March 31, 2023, recipient is Fairmount Ministries, Wichita, Kansas.



## ORGANIZATIONAL RESOURCES

Kirsten Hastings | Committee Chair

---

Priya Parker, facilitator, strategic advisor, and author of *The Art of Gathering: How We Meet and Why it Matters*, states that the first five percent and the last five percent of meetings are the most remembered and therefore the most impactful moments. And therefore, we should make sure that, while logistics are covered, they are not the last thing we talk about or present. That's why we are requesting all zones to consider adding a Crisis Management Team plan to your next round of bylaw revisions. What can this look like?

**Step One:** Add the duty to an officer already in place.

e.g. "appoint a Crisis Management Team for all Zone meetings and events and see that names are announced and printed in programs"

**Step Two:** Add a guideline to your standing rules.

Guideline for Crisis Management for LWML Meetings:

1. "Named Officer" shall appoint a Crisis Management Team for all Zone-sponsored meetings and events. This team shall consist of the a member of the Executive Committee, Host President, a medical person (i.e. nurse, EMT, etc.) and the Zone Pastoral Counselor or Host Pastor.

2. The Crisis Management Team shall be familiar with the following:

a. Zone LWML Emergency Plan: If a fire or weather-related emergency occurs, the team will work with the Host President or Host Pastor to provide emergency instructions and precautions to the attendees. If a medical emergency occurs, go to the person(s) involved immediately. Call for EMS care via 911. Talk to the person(s) the attendee came with for the purpose of locating medication, if any, etc.

b. Host Group Emergency Plan for illness, injury, fire and weather-related emergencies.

3. The Crisis Management team shall be announced and printed in programs as communication to all attendees.

4. Communication in a Crisis:

a. inform all crisis team members of the crisis;

b. assess the situation;

c. take the appropriate actions.

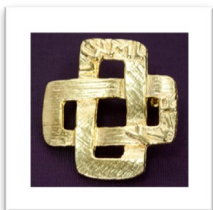


Once prepared for our gatherings with updated bylaws we pray for the blessing of our truest crisis manager, Jesus, to watch over and keep us at all of our zone-sponsored meetings and events in His name and with His protection.

**ARCHIVIST**

Marie Roth | Co-Archivist

---



The LWML Kansas District Archivists are preparing a convention exhibit about the Young Woman Representative (YWR) program. Do you have pictures of your time as a YWR or of those who have served as a YWR? If you would like your memories included, please send the picture and a brief description (who, what, when, where) to Marie Roth at [archivist.marie@kansaslwml.org](mailto:archivist.marie@kansaslwml.org) or 1031 Highway K 68, Pomona, KS, 66076. Thank you!

## CONVENTION PLANNING

Eden Keefe | Convention Planning Chair

You may remember the days of “memory work” in Sunday School, confirmation class, or in school, if you went to a parochial school. I’m guessing you weren’t all that thrilled with it. (I wasn’t.) As I get older though, I find myself cherishing the ability to recall Bible verses and hymn stanzas. Will you join me in committing our 2022 LWML Kansas District Convention theme verse to memory? Write it out on a sticky note or index card. Tuck it in your daily devotion book. Jot it in your journal. Use it when you open your group meetings or Bible studies.



*Lead me in your truth and teach me, for you are the God of my salvation; for you, I wait all the day long (Psalm 25:5).*

I hope you are eagerly awaiting the convention issue of *The Kansas Sonshine* and making plans to join us in Overland Park, Kansas, **April 22–24, 2022!** Please pray for our planners, our committees, our presenters, and our participants as we celebrate that “His Cross is our Compass.”



**RIDE THE BUS!!** We’re making plans to provide a bus to the April convention from Wichita to Salina to Overland Park on Thursday, April 21. PLEASE let President Kim know if **YOU’d** like a ride by emailing her at [president@kansaslwml.org](mailto:president@kansaslwml.org). We need at least 25 passengers by **JANUARY 15** in order to book the bus. Send your \$50 deposit to Financial Secretary Kathryn Richard at P.O. Box 314, Arma, KS 66712.

## SPECIAL FOCUS MINISTRIES

Jill Lowe | VP of Special Focus Ministries

The Special Focus Ministries Committee is preparing for women of all ages to attend the LWML Kansas District Convention in Overland Park in April. It will be a mountain-top experience for everyone, as we use His cross as our compass in 2022.

- The committee is making BIG plans for the Young Woman Representatives (YWRs) who will be attending the district convention! Our YWRs will have a busy schedule full of fun, fellowship, and learning all about LWML.
- Teens are welcome! We would love to have teens join us at convention! If you have a teen who will attend, please let us know by noting it on the convention registration form. We will plan activities for them as well.
- We are also looking forward to greeting and meeting all the first-timers to the convention! If you’ve never attended a district convention, now is the time! We’ll be looking for you!
- This past summer, the LWML Kansas District was blessed to have three YWRs attend the national convention in Lexington, Kentucky. They will share their experiences with us at the district convention.
- The convention shirt order form is in this issue of *The Kansas Sonshine* ([page 8](#)). The order deadline for shirts is **FEBRUARY 28, 2022**. Shirts will be available for pick-up at the convention!

***The Special Focus Ministries Committee looks forward to welcoming you to the convention in Overland Park in April.***

# LWML Kansas District

## 2022 Convention Shirt Order Form

For the 2022 convention, we are offering a V-neck unisex style shirt in butter cream with the convention logo in dark purple, 60% cotton/40% polyester.



Shirts must be pre-ordered and picked up at convention.

Shirts may also be pre-ordered online at [www.kansaslwml.org/2022-district-convention](http://www.kansaslwml.org/2022-district-convention).

---

Name: \_\_\_\_\_

Size

Address: \_\_\_\_\_

S\_\_

Phone: \_\_\_\_\_

M\_\_

Email: \_\_\_\_\_

L\_\_

XL\_\_

Quantity: Shirts \_\_\_\_ x \$15 each =

2XL\_\_

Total Due \$ \_\_\_\_\_

3XL\_\_

\*Please mail payment with order form to: Elise Cleary, 2363 S 343<sup>rd</sup> St W, Cheney, KS 67025\*

**\*\*All convention shirt orders must be received by February 28, 2022\*\***

**\*\*\* Make checks payable to: LWML Kansas District Convention 2022\*\*\***



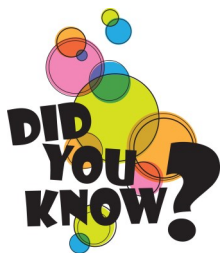
## PLANNER TIPS

Eden Keefe | District Planner

Are you trying to be more "user-friendly" in your LWML bulletin announcements and church newsletter articles? One suggestion is to use the term "local group" or even just "group" instead of "society." Another one is to use "mite offering" or "mite donation" instead of "mites." Someone mentioned they invite women to "come" not "join us."

*Do you have other ideas or suggestions for crafting a welcoming invitation or announcement? If so, send your idea to Sherri Rose at [sonshine@lwml.org](mailto:sonshine@lwml.org) to be posted in The Kansas Sonshine as they're received. We'd like to hear from you!*

Do you use the "Search" feature on the [LWML website](#)? It can help you locate a form, a devotion or Bible study, information about mission grants, or leadership documents. The rule of thumb is to be fairly general at the beginning. Example: "Valentines" would be a good start if you are searching for Valentines resources. On the home page at the upper right there is a box with a magnifying glass icon and a box that says, "Search this site ...". You type in your keyword and hit Enter or click on the icon. Voilà! Valentine Mission Service Activities, devotions, Bible studies, etc.



- \* **Did you know** that the *Lutheran Woman's Quarterly* is an excellent resource AND outreach tool? The winter issue had the theme "For the Joy" and included wonderful articles, Bible studies, devotions, a lovely poem, and news from groups around the nation. The spring issue will feature articles and resources about Endurance.
- \* **Did you know** that you can get the *Quarterly* for those who are sight-impaired FREE OF CHARGE? It is available in braille, large print, or on cassette tapes FREE from Lutheran Braille Workers, P.O. Box 5000, Yucaipa, CA 92399, 800-925-6092. (Even the shipping is free.)
- \* **Did you know** that you can order an individual subscription of the *Quarterly*? It will be sent directly to your address and costs only \$7.50 for one year (four issues). Call 800-252-5965 to subscribe, change address, or get back issues.
- \* **Did you know** that you can receive a digital copy at the same price? Check out all the features of the *eQuarterly* at [www.lwml.org/groups/equarterly](http://www.lwml.org/groups/equarterly).
- \* **Did you know** that portions of the *Quarterly* are available on the LWML website for free download? And, after two years, the entire issue is available. Find them archived at [www.lwml.org/lutheran-womans-quarterly](http://www.lwml.org/lutheran-womans-quarterly).

### REMINDER:

LWML groups' *Lutheran Woman's Quarterly* and web maintenance fee payment is due **March 15, 2022**. The form may be found at [www.kansaslwml.org/communications](http://www.kansaslwml.org/communications).

# LWML KANSAS DISTRICT ZONE AND LOCAL GROUP NEWS

**HUTCHINSON ZONE** had more than 40 LWML'ers attend *Blessed and Be-Leafing Zone Event* on October 16 at Trinity, Ellinwood. The Ellinwood Food Bank was blessed with 250+ personal hygiene ingathering items! Lydia Kolanowski, Our Redeemer, Herington, gave her YWR report from the LWML convention in Lexington, Kentucky. Two wall hangings made by Marsha Giggy were raffled, with proceeds given as mite donations.



Ellinwood Food Bank Items



Bonnie VonLehe, Marsha Giggy, Darlene Magnuson



YWR Lydia Kolanowski

+++++

**LINN ZONE LWML** met for their Fall Event on October 24 at Immanuel, Bremen. Pastor Aaron Fenker opened with a devotion on Ephesians 5, followed by singing of the doxology. Zone Pastoral Advisor Philip Miller presented an informative and refreshing review of Luther's Small Catechism. The ingathering included donations of baby items for Swaddling Clothes Project, Greenleaf, Kansas. Michele Voelker reported on this ministry and how it is helping young mothers in the area. The servant event was assembling witness bracelets for MOST Ministries and Swaddling Clothes Ministry. Mary Dohl, LWML Kansas District Recording Secretary, presented the District President's Report, reminding young women to apply to be a YWR at the upcoming district convention. Immanuel Ladies Group served ice cream sundaes followed by a time of fellowship.



Linn Zone Servant Event

+++++

**WICHITA ZONE LWML** met October 23 at Grace, El Dorado, with 42 total attendees. The day started with a Bible study based on Hebrews 12:2 led by Pastor Dean Von Stroh. LWML Kansas District President Kim Burdett attended and gave the district report. After lunch, servant events included assembling layettes and hygiene kits for Orphan Grain Train, with items purchased with a Thrivent grant. Trail mix was bagged for Butler County Homeless Initiative, and a donation of an ingathering of toiletries and a gift of \$250 was also given to them. *What a great sharing of Jesus' love to Wichita neighbors!*



Wichita Zone Ingathering



Wichita Zone Fall Event



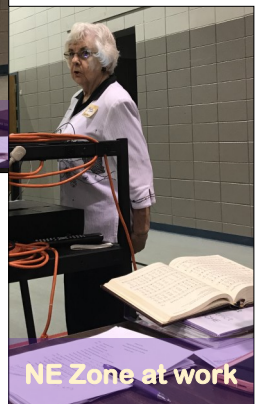
## LWML KANSAS DISTRICT ZONE AND LOCAL GROUP NEWS



**SOUTHEAST ZONE** Fall Event was held October 23 at Grace, Iola, with the theme *From Seed to Harvest*, based on Ecclesiastes 3:2. The inspiring and faith-strengthening event included the KAOL prayer walk, an ingathering of items for Pregnancy & Family Center, three servant events, and a Bible trivia study, focusing on Christmas events, led by Pastor Daugherty. Servant events involved trimming stamps, tying fleece quilts, and making table favors for the upcoming district convention. There were approximately 25 women and 2 pastors in attendance. Pastor Kristalyn closed with a devotion that involved matching photos from the *Wizard of Oz* with Bible verses. The women from Grace served a delicious lunch before dismissing. The Southeast Zone is happy to serve as a co-host zone for the 2022 LWML Kansas District convention in Overland Park. Their prayer is that the convention will be a Christ-centered, Spirit-led mountain top experience for all!

+++++

The **NORTHEAST ZONE** held their Fall Gathering on October 9 at the Trinity, Atchison school gymnasium, with 30 attendees. LWML Kansas District President Kim Burdett and husband were in attendance, representing the district. Sadie Meyer, Fairview, the NE Zone YWR for the LMWL Kansas District convention, was also in attendance. Pastor Richard Lally, zone pastoral counselor, led the Bible study based on Matthew 4:19, using the theme "Follow the Son". Charlotte Ziegler gave a firsthand history account of Orphan Grain Train (OGT), Norfolk, Nebraska. She also gave an inspirational talk of how OGT has impacted the Norfolk community and countless lives. The ingathering was items for OGT health kits and there was a mite challenge selecting your favorite flower. *Thanks for the mite challenge idea, NE Zone!*



## LWML KANSAS DISTRICT ZONE AND LOCAL GROUP NEWS

**RISEN SAVIOR LWML, WICHITA**, had a great time coming together on September 26 for their first “in-person” event since the beginning of the pandemic. They hosted a baby shower benefitting Gerard House, the maternity home for Wichita Children’s Home. Items collected included diapers, wipes, bottles, formula, gift cards, clothing, toys, and numerous other baby items. A fun activity, organized by Holly Thiessen with Thrivent grant money, was assembling “cupcakes” made from onesies and socks, to be given to new moms, as well as care bags that were also assembled by attendees. *What a great way to celebrate a “first” gathering and support new moms in the Wichita area!*



Risen Savior Baby Shower



Making “cupcakes” with onesies!

+++++

**ST. JOHN’S WOMEN’S LEAGUE OF THE LWML, TOPEKA**, held their annual cookie walk, bazaar, and bake sale on the first Saturday in December for the public, and Sunday for the congregation of St. John’s, raising approximately \$3,500 to distribute. In January, they will determine which missions they will support, as well as a seminary student, the LCMS joint seminary fund, and Topeka Lutheran School. All items for sale at the event are homemade by members and friends. Volunteers are from both their LWML group and the congregation. All glory to God for the good things he gives to LWML!



St. John’s Registration Table



St. John’s Cookie Walk



St. John’s Bake Sale



## LWML KANSAS DISTRICT ZONE AND LOCAL GROUP NEWS



Hello from **TRINITY, SALINA**! We'd like you to meet Sharon Gummert. She's 80+ years old and works tirelessly for our Caring Service Committee. This year she made 17 pillowcase dresses for Orphan Grain Train and 20 baby quilts. She cuts and sews quilt blocks at her home. We are blessed to have her as well as all the other Wonderful Witnessing Women at Trinity. *Thank you, Sharon, for Serving the Lord with gladness!*

+  
+  
+  
+  
+  
+  
+  
+  
+  
+  
+  
+  
+  
+  
+  
+  
+  
+  
+

+++++



### **Blast from the Past**

As we approach the 2022 LWML Kansas District Convention, enjoy this photo, from the 2006 LWML Kansas District Convention, of St. John's, Moundridge, 2006 convention attendees.

(left to right) Wanda Salmans, Noda Wedel, Lou Fensky

*Thank you, Shelly Keller, for submitting this photo!*

ST. PAUL'S LWML, NORTH ELLSWORTH, has Christmas caroled in past years to celebrate the holiday, inviting members of the congregation to join them, and enjoyed homemade soups and desserts afterwards. COVID-19 restrictions forced them to change plans in 2021. In place of caroling, they treated congregation members who are 80+ years young, shut-ins, bachelors, and the pastor, with a jar of homemade soup, crackers, and homemade cookies. The recipients were very surprised and appreciative; the women who put it all together enjoyed the fellowship of preparing for the deliveries. St. Paul's LWML prays that caroling will resume next Christmas!



## UPCOMING LWML GROUP EVENTS

*Welcome* to a new section of *The Kansas Sonshine*!

### UPCOMING LWML GROUP EVENTS

If your LWML group is planning an event and you'd like to inform all LWML Kansas District groups, email Sherri at [sonshine@kansaslwml.org](mailto:sonshine@kansaslwml.org) with the information. *The Kansas Sonshine* is printed in January, April, July, and October. Articles and information are due by the 5th of the month prior to publishing.

*Be sure to pay close attention to publishing dates and article due dates.*

#### **MARCH 5, 9am—2:30pm**

\* Women's Retreat at Holy Cross, Wichita; Speaker—Katie Koplin

Early Registration—\$20; Registration after February 18—\$25

Registration form and info available at [www.HolyCrossLutheran.net/LWMLretreat](http://www.HolyCrossLutheran.net/LWMLretreat) in January (check back if it's not available the first time you check)



## 2022 DATES TO REMEMBER

**February 1**—Zone YWR registration and fees **DUE** to Special Focus Ministries Committee

**Early February**—Convention *Sonshine* published, including all convention details

**February 11**—EC meeting, Beautiful Savior, Olathe

**February 12**—Convention Host Committees meeting, Beautiful Savior, Olathe

**February 28**—**Convention Shirt Orders DUE** (see [page 8](#))

**March 5**—Spring *Sonshine* articles **DUE** (*Sonshine* will publish early April)

**March 15**—*LWQ Quarterly* and Web Maintenance Fee **DUE**

**April 20-21**—EC Meeting

**April 21**—BOD Meeting, Bethany Lutheran, Overland Park

**April 22-24**—LWML Kansas District Convention, DoubleTree Hotel, Overland Park

**May 6-7**—EC Transition Meeting, location TBA

To be included on the District Prayer Mail (P-mail) group listing, please send your name and current email address to Velma Bass, [pmail@kansaslwml.org](mailto:pmail@kansaslwml.org). Requests, thanksgivings, and joys are distributed in "blind copy" manner so that your email address is not shared.

Contact information changes for groups or zones should be emailed to Brenda Piester at [directory@kansaslwml.org](mailto:directory@kansaslwml.org).

## **LOOKING FOR LWML RESOURCES OR IDEAS ???**

- + Need a **Bible study** or **devotion** for your LWML group? Visit [www.lwml.org/program-helps](http://www.lwml.org/program-helps).
- + Need a **mission service activity** idea? Or a monthly **mite calendar**? Go to [www.lwml.org/gospel-outreach](http://www.lwml.org/gospel-outreach).
- + Need ideas for helping your LWML group **grow** in your relationships and in faith? Visit [www.lwml.org/growthanddevelopment](http://www.lwml.org/growthanddevelopment).
- + Looking for information or resources for the **young women** in your group? Go to [www.lwml.org/young-women](http://www.lwml.org/young-women).

These resources and SOOOO much more are available from **LWML**! Check it out—visit [www.lwml.org](http://www.lwml.org) today!



## Mission Statement

*Empowered by the Holy Spirit, the Lutheran Women's Missionary League Kansas District will nurture, motivate, and prepare The Lutheran Church – Missouri Synod women to serve the Lord with gladness.*