

The Kansas Sonshine



Volume 78 : Number 2

Spring 2021

LWML Kansas District

When Jesus spoke again to the people, he said, "I am the light of the world. Whoever follows me will never walk in darkness, but will have the light of life" (John 8:12).

Follow! Let's throw a new word into the mix of "Kim's Words." So far, our list has included **Look**, **Focus**, and **Listen**. Add **Follow**. Are you a follower of Jesus? Or are you just friends with Jesus? Let me try to describe the difference as I see it. Let's say a group of people pass by your house with Jesus in the lead. Would you stand on your porch and wave and say "Hey! I know you!!"? Or would you run to join the group and follow along? Are you "all in"? Are you willing to let Jesus lead; are you willing to follow, no matter where He leads? Are you following His command? The President's theme for my term of 2020-2024 is based on these thoughts.



May you find many ways to Serve grace-fully as a Christian full of grace. *Serving might not always be easy or convenient. But when you serve knowing that Jesus is in the lead, you can have the confidence that you are at your best! Your attitude will be full of grace as you follow Him.*

Do so in joyful Obedience, as this is how our Lord has taught us. *Being obedient to His command is our privilege and honor. Spend time in prayer and ask for guidance to do His will. Be joyful as you follow His command.*

Fix your eyes on Jesus and set a New focus on Him and not what we see in the world. *Always have your focus on Jesus. The world is negative and full of wasteful, time-consuming activities. Focus on Jesus' will for you. Maybe He's showing you something new or maybe something needs to be revisited. Whatever need requires your focus should always begin anew with Jesus and end with an obedient attitude as you follow Him.*

Spring is always a busy time for LWML zone events and elections. I hope you will follow Jesus by being joyfully obedient and by not making excuses when asked to serve. "I don't have time" is not a valid excuse. Yes, I said it. When asked to serve on a national committee by the LWML president, I replied that I didn't know if I had time and that I was in awe of how our LWML leaders found time to serve. Her response was simply that she didn't need to find time – God gave her time to serve Him. What do you think my response was?

Blessings as you **"follow the SON."** I look forward to serving with **you!**

Kim Burdett
District President



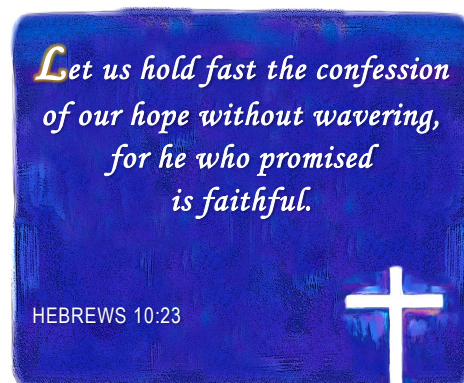
Mission Statement

Empowered by the Holy Spirit, the Lutheran Women's Missionary League Kansas District will nurture, motivate, and prepare Lutheran Church-Missouri Synod women to serve the Lord with gladness.

As Americans, we like our buffets where we can take the food we like; picking the best to suit our palate, forming a plate of dripping deliciousness while never needing to eat our Brussels sprouts if we don't want to. As Americans we take this approach to everything; if it does not serve me or line up with what I already think, then I reject it. This form of self-selection is used on everything in life from clothing styles, to food, to how we develop our worldview. This autocratic lens directs how we interpret the world around us.

On the other hand, as Christians, we have a shared worldview formed by the Scriptures as a gift of God. The book of Hebrews says, *Now faith is the assurance of things hoped for, the conviction of things not seen. For by it the people of old received their commendation. By faith we understand that the universe was created by the word of God, so that what is seen was not made out of things that are visible* (Hebrews 11:1-3). As Christians we have a likeminded approach to the way we look at things. We are a collection of individuals sharing in one Lord with such a close family relationship in Christ that we are one collective body. As St. Paul writes, *For just as the body is one and has many members, and all the members of the body, though many, are one body, so it is with Christ. For in one Spirit we were all baptized into one body—Jews or Greeks, slaves or free—and all were made to drink of one Spirit. For the body does not consist of one member but of many* (1 Corinthians 12:12-14). In Christ we curtail our individualism, in favor of our collective identity.

Over the last year we have been missing one another. Death, sickness, and fear of sickness has driven us into a state of isolation, and as a result of this societal shift, good, godly Christians have avoided one another. Although we have been apart from one another, the words of the book of Hebrews still cry out to us, *Since we have a great priest over the house of God, let us draw near with a true heart in full assurance of faith, with our hearts sprinkled clean from an evil conscience and our bodies washed with pure water. Let us hold fast the confession of our hope without wavering, for he who promised is faithful. And let us consider how to stir up one another to love and good works, not neglecting to meet together, as is the habit of some, but encouraging one another, and all the more as you see the Day drawing near* (Hebrews 10:21-25).



IN THIS ISSUE

President's Page.....	1	2022 District Convention Invitation	8	LWML Convention Info.....	14
Counselor's Corner.....	2	District Planner	9	Young Woman Representatives	15
Caring Service	3	Gifts of Love	9	Church Workers in Mission	15
Christian Life.....	4	Gospel Outreach	10	Zone News	16
Christian Life Women's Retreat		Mission Grants Poster	10	Dates to Remember	17
Brochure	5-6	SFA Application	11-12	KAOL Information.....	17
Financial Secretary	7	Organizational Resources	13		
2022 District Convention Info.....	7	Nominating Committee	14		

Are you joining the race to the National Convention in Lexington? If so, you will want to check out the items for Gifts from the Heart in the winter *Lutheran Woman's Quarterly*. You can find more details on the LWML website, www.lwml.org. Choose the Convention Central page under the News and Events tab. The flyer for "Gifts from the Heart" is located under the heading "Convention Attendee Information." If you are not attending the convention but would like to participate, Concordia Publishing House is offering a special on Arch Books for the convention. Books will be delivered directly to Lexington. The deadline to place an order is May 23, 2021. Use the promocode "GFTH" at the checkout to receive the discounted prices. Visit <https://books.cph.org/lwml-gifts-from-the-heart> and click "Order Online" to go directly to the registry and select the books.

We have had a number of questions about how kits and quilts may differ between Lutheran World Relief (LWR) and Orphan Grain Train (OGT). The Caring Service page on our web site, www.kansaslwml.org, now has a link for Orphan Grain Train kits. Click on the bold letters of any one of the OGT kits and you will see the items needed. Whether you are preparing kits for LWR or OGT, it is important to include **only the items requested**. Backpacks for School Kits may be purchased or homemade in the zipper or string style. Quilts for OGT can be any size, but the most practical is the same as the LWR requirement, 60" x 80". Quilts or kits may be delivered to the OGT warehouses in Phillipsburg or Wichita anytime of the year when they are open. Remember that we **will** have a truck picking up quilts and kits for **LWR** in October, 2021. Locations and dates are on the [Caring Service](#) page of the LWML Kansas District website. If you have any questions, please contact caringservice@kansaslwml.org.

LWML Convention Ingathering Items



Assurance for Life Ministry: baby toiletries, especially laundry baskets (small or collapsible); disposable diapers, especially size 3 and wipes; books and toys, especially rattles and teething rings; and Arch Books from CPH, which can be ordered to be delivered directly to the convention (see above).

More items for Assurance for Life Ministry are listed on the LWML website, www.lwml.org.

Food Bank Support—Concordia Seminaries Fort Wayne and St. Louis: gift cards to stores like Walmart and Target in denominations of \$10, \$20, and \$25.

Most Ministries: used eyeglasses in good condition.

Orphan Grain Train

School Kits

Hygiene Kits

Layettes

Feminine Hygiene Kits

Quilts

More about these kits on the
Caring Service page,
www.kansaslwml.org.

Need an idea for your own group
or zone event
"Gifts from the Heart"
ingathering??

Check out the [LWML Toolkit Kits](#)
on the LWML website.

There are many suggestions for
ingatherings, as well as
instructions for assembling kits.

“Choosing Joy”

2020. What’s the first thing that popped into your head? Was it something along the lines of masks, disinfectant wipes, hand sanitizer, social distancing, shutdowns, etc.? With the start of a new year, many messages are pouring in about closing 2020 and throwing away the key — forgetting about anything that has to do with the messes and stresses the year brought.

How about a different perspective?

The Eve Circle of the Kansas City Crossroads Zone had been studying Deb Burma’s book, *Joy: A Study of Philippians*, when our society was thrown into the world of COVID-19 life. While the study was already proving to be a huge blessing to those participating, it unraveled whole new layers of grace on our group as we began to face the challenges that many of you also faced — stay-at-home orders, shut down of work and churches, separation from loved ones, etc. The study asked us to examine and reflect on Paul’s imprisonment ... and subsequent JOY(?!). Wait ... what? Amidst the challenges that Paul faced, he **CHOSE** to give praise to God for His faithfulness, His work in sinners’ lives, and His continued outpouring of undeserved grace and unimaginable love.

If we’re being honest with ourselves, is that how we reacted to the challenges and setbacks of 2020? Was the first thing that popped into your head upon hearing “2020”, “JOY”? Probably not. So when the world is pouring doom and gloom messages at us and telling us to just erase a year’s worth of living, how can we fight back and **CHOOSE** an attitude of JOY? The year was filled with God’s faithfulness (we still have the promise of eternal life!), God working in our lives (He uses YOU every day for His purposes!), and God pouring out grace and love on us (despite our ungrateful attitudes, He remains gracious!).

One meaningful activity that our Eve Circle group did was create Joy Journals, in conjunction with and in response to our study of Deb’s book, *Joy*. Our leader, Alli Bauck, gave each of us a handout with a chart to record our personal 2020 joys. Keep in mind that we started this before we could have even imagined all that the year would bring! There were three columns: Date, Joyful Details, and Joyful Evidence. The idea was that each of us would keep written notes about joyful events (i.e. birthdays, life changes, family celebrations, answered prayers) with ideas for how we could creatively craft a memorabilia journal for the year (i.e. photos, letters, brochures).



Looking back, it’s funny how my reflections started with “big” things, like celebrating a friend’s wedding, and progressed to “simpler” things, like sitting in the driveway soaking up the sunshine. My earlier entries (January—March) seemed more rushed and surface level, but as the challenges of the year became more prevalent, my joy entries surprisingly became more meaningful ... I even had to make a few extra pages to hold all the joys! It would’ve been easy to focus on all the things that were canceled due to COVID-19 restrictions, but when I **CHOSE** to focus on the blessings in my life, I was surprised how truly easy it was to **FILL** myself (to overflowing!) with a JOYFUL perspective.

Maybe you could take this idea to your own LWML group and give it a try?! Or maybe you could just take five minutes **RIGHT NOW** and brainstorm five JOYS to praise God for, whether it’s a list of things that happened in 2020 or that happened just today. Either way, I pray that as you reflect on the past year and look forward to this new year that you are able to recognize, appreciate, and praise God for **ALL** of the JOYFUL blessings that abound in your life!

2021 CHRISTIAN LIFE RETREAT

Keeping the
FOCUS on JESUS

November 12-13

REGISTRATION FORM PAGE
5-6 OF THIS PUBLICATION

Please join us
at the
Lutheran Women
in Mission
Christian Life Retreat

Featuring
Patti Ross
Past LWML President 2015-2019

“Keeping the Focus on Jesus”

Let us fix our eyes on Jesus ...
(Hebrews 12:2)

November 12-13, 2021
DoubleTree by Hilton
2098 Airport Road
Wichita, Kansas

Sponsored by the
LWML Kansas District

Enjoy a relaxing weekend of
connecting with old friends and
meeting new ones.

ENJOY MUSIC

MEDITATE IN GOD’S WORD

LIGHTEN YOUR SPIRIT
WITH LAUGHTER

WIN PRIZES

The LWML Kansas District Store
will have items available for your
shopping enjoyment.

Bring your Bible,
a writing utensil and
Bring a FRIEND!





Patti Ross, Past President 2015-2019

Patti's experience in LWML has always been a source of joy. It is no surprise her vision for LWML is that it be enjoyable work, where women can be equipped and encouraged to serve in God's Kingdom. For each woman this brings added spiritual growth and mission opportunities. The LWML is a place where each woman is valued for her uniqueness in God's plan for His church and is engaged in using her special God-given gifts.

Participating in numerous mission trips and serving as LWML president, Patti's faith life has grown to new and greater dimensions. She loves sharing the work of the LWML with other LCMS entities and mission grant recipients. However, seeing the impact first hand of what the Lord can do through the work of wonderful LWML women has been her greatest joy.

Patti and her husband of 46 years, Bill, enjoy water sports, especially scuba diving. During the school year you will find them at Oklahoma State University athletic events. She is a retired registered nurse and served in the U.S. Navy Reserves on active duty in Virginia. Patti and Bill have been blessed with three lovely, fun grandchildren and treasure their roles as Grandpa and Grandma.

AGENDA

FRIDAY ~ November 12

— *Dinner on your own before the event starts* —

5:00 p.m. Registration Opens, check into rooms / Shopping Open until 6:30 p.m.

6:30 p.m. Welcome / Session I

8:00 p.m. Vespers Service

8:45 p.m. Fellowship:

SATURDAY ~ November 13

7:15 a.m. Registration Opens

7:30-8:30 a.m. Breakfast provided
Shopping Open until 9:00 a.m.

9:00 a.m. Welcome / Session II

11:15 a.m. Break / Shopping Open until
12:30 p.m.

11:30 a.m. Lunch Served

12:30 p.m. Session III

2:30 p.m. Closing Thoughts

‘Social distancing will be able to be observed as required/needed.’

Name: _____
Address: _____
City: _____ Zip: _____
Phone: _____
Email: _____
Special Needs: _____

REGISTRATION:

(PLEASE CHECK YOUR CHOICES AND ENCLOSE AMOUNT ACCORDINGLY)
Hotel Room, Meals & Activities for One Great Price!

Rooms are Double—Double Beds

- ☐ 1 person/room \$170.00
- ☐ 2 persons/room \$115.00 per person
- ☐ 3 persons/room \$90.00 per person
- ☐ 4 persons/room \$82.00 per person
- ☐ I plan to attend the retreat, but will not stay at the hotel. Registration cost: \$55.00
Includes Breakfast and Lunch

♦ **PLEASE ADD \$10 if postmarked AFTER
September 28, 2021**

I have a roommate/s: _____

_____ The Committee may assign me a roommate.

Lunch Choice (choose one)

_____ Chopped Cobb Salad (grilled chicken, tomato, egg, bacon, crumbled bleu cheese)
_____ Country Club Sandwich (turkey, ham, Swiss cheese, bacon, lettuce, tomato on croissant)

Make checks payable to LWML Kansas District.
Please send registration form with payment to:

Cathi Temple
214 3rd St.
Westphalia KS 66093

FINANCIAL SECRETARY | Kathryn Richard

Our current mite giving is behind compared to the same period in the previous biennium; however, we do appreciate the mites that are being submitted. We realize some groups have been unable to meet regularly due to the pandemic, but we do encourage you to be faithful in feeding your mite boxes.

NOTE: If you need more mite boxes for your group, please email me with the amount you need.

If you are a Thrivent member, did you know you can designate your Thrivent Choice Dollars to support LWML? That's the source of the Thrivent Choice total listed in the blue box, which supports the God's Gracious Gift Fund in the LWML Kansas District.

Challenge: As did my predecessor, I save the stamps from your mite envelopes. I enjoy seeing the flag designs but encourage you to purchase and use commemorative stamps. This supports the LWML Texas District Stamporee Project with all proceeds going to the Lutheran World Relief Quilt/Kit Shipping Fund.

If you have questions about submitting your group's mite offerings or other contributions, or need help setting up your Thrivent Choice designation, please do not hesitate to contact me at financialsecretary@kansaslwml.org.

UPDATES FOR THIS BIENNium (2020-22)

as of 2/28/21

Mite Offerings Received

\$52,116.63

Other Funds Received

District Mission Grants:

\$1,217.17

God's Gracious Gift Fund:

\$2,234.42

Thrivent Choice:

\$925.00

Send mites to:
Kathryn Richard
Financial Secretary
P.O. Box 314
Arma, KS 66712

2022 CONVENTION CHAIR | Eden Keefe

2022 LWML Kansas District Convention

The 2022 LWML Kansas District Convention Planning and Host Committees are excited to share the 2022 Convention logo. Our thanks to Michaela Cox for the final design work. Both host zones are recruiting volunteers and thank you in advance for your prayers during the preparation and planning. We toured the convention hotel in February, and a convention planning meeting is scheduled for May 1. Mark your calendars for April 22-24, 2022, as we meet at the DoubleTree Hotel in Overland Park, Kansas.

Lead me in your truth and teach me, for you are the God of my salvation; for you I wait all the day long (Psalm 25:5).



It's time to get CREaTIVE ...

Designs are needed for the **2022** LWML Kansas District Convention Banner.

Please submit a complete banner design to President Kim by **July 1, 2021**.

The Board of Directors will vote on banner designs at KAOL.



Lutheran Women in Mission

39th BIENNIAL CONVENTION

FRIDAY, APRIL 22, — SUNDAY, APRIL 24, 2022

DoubleTree by Hilton Hotel | Overland Park, Kansas

Hosted by

Kansas City CrossRoads and Southeast Zones

Convention Goal Statement

With His cross as our compass, we will:

- ♦ be guided by His Word
- ♦ navigate a path of service for His Kingdom, and
- ♦ point others to Jesus, our salvation.



Convention Verse

Lead me in your truth
and teach me,
for you are the God of
my salvation;
for you I wait all the
day long
(Psalm 25:5).



Style Guide Tip

If capitalization trips you up, here is a handy entry from the LWML [Style Guide](#) to help.

capitalization — Capitalize district, zone, group, committee, etc., only when part of a proper name. Always capitalize LWML committee and department names.

For example: The LWML Kansas District invites you to the 2021 Christian Life Retreat.

Sally attended the district convention.

The Gospel Outreach Committee will give a report.

titles — Capitalize LWML positions of office in all references. When referring to non-LWML positions, capitalize titles only when preceding (coming before) the name.

For example: She has served as Recording Secretary, Christian Life Committee Chairman, and a Bible study leader.

The Vice President of Communication will speak at the LWML convention.

Ron Jones is our congregational president. vs Congregational President Ron Jones will preside at the meeting.

The full title of a district president should be written in the following order:

LWML Kansas District President Kim Burdett.

Be sure to consult the LWML [Style Guide](#) any time you have a question about writing style details.



Returning God's Blessings

***Oh give thanks to the Lord, for he is good,
for his steadfast love endures forever! (Psalm 107:1).***

As we continue to proclaim Christ crucified and resurrected – we are very mindful of the end of that verse, *his steadfast love endures forever!*

The women and men of LWML have a heart for faith, family, and mission-giving. What better way to pass on that legacy of faith and mission service than including the Lord's

work in your estate plan?

Whether you seek to

share your faith by using a Christian preamble for your will or living trust,

bless your family by recording your wishes and instructions for end of life to guide them, and/or

impact ministry with a simple bequest or beneficiary designation,

one of our professional, trusted Gifts of Love Planning Counselors can help you! This LWML ministry is offered as a free service to LWML members and their families. For more information go to www.lwmlgiftplan.org.

The LWML Gift Planning Counselor that works in the Kansas District is Carol von Soosten. Contact her at carol.vonsoosten@lfnd.org, 800-741-4138.



Spring is coming! Spring is coming! How do I know this? I saw a robin in my front yard, so I know spring cannot be far behind. What does spring time mean to LWML? Spring Semester Student Financial Aid has been paid and we encourage students to start applying for Fall Student Financial Aid. **The deadline for applications is June 1, 2021.** The application form is on the [Gospel Outreach](#) page of the LWML Kansas District website and on page [11-12](#) of this publication.

Spring is a time to look at our mite giving. Mission Grant #3 to Concordia Theological Seminary Food & Clothing Co-op at Fort Wayne, Indiana for \$5,000 has been paid! Mite donations can be sent directly to Kathryn Richard, Financial Secretary, or made online at the [LWML Kansas District](#) website. Thank you to everyone for sending in your mite offerings. Without them, our mission grant goal cannot be achieved.

I wish for all of you to be safe and healthy in this new year! Hopefully, I will see some of you at the LWML Convention in Lexington, Kentucky in June.

Have you looked at the Mission Grants Poster recently? Notice all the grants that have been paid!

Download the full sized poster from the [LWML Kansas District](#) website.

A poster with details of each grant may be accessed under the "current progress" bar.

**KANSAS DISTRICT LUTHERAN WOMEN IN MISSION
MISSION GRANTS & STUDENT FINANCIAL AID
2020 - 2022**

BE THOU MY VISION



Hebrews 12:2

- COMPLETED** 1. Orphan Grain Train (\$5,000) -
COMPLETED 2. Lutheran Indian Ministries, Haskell LIGHT (\$5,000)
COMPLETED 3. Concordia Theological Seminary (\$5,000)
4. Lutheran Bible Translators (\$5,000)
5. TIG Ministries Partnership (\$4,500)
6. KansaSEED, LCMS Kansas District Deaf Ministry (\$5,000)
7. Topeka Lutheran School (\$5,000)
8. Kansas District LCMS Retreat Center (\$8,500)

Fall 2020—Student Financial Aid: \$10,000

Spring 2021—Student Financial Aid: \$10,000

Fall 2021—Student Financial Aid: \$10,000

Spring 2022—Student Financial Aid: \$10,000

Heavenly Father, thank you for Your vision to support these organizations during this biennium. Watch over them and guide them to do Your work. In Jesus' name. Amen

**LWML KANSAS DISTRICT
DAY OF PRAYER
RECIPIENTS**

April 1, 2021 – March 31, 2022

4KENYAS KIDS

4KenyasKids supports the education of over 700 orphans through a child sponsorship program, and strengthens widows and extended families to care for vulnerable children. For more info, visit www.4kenyaskids.org.

**REDEEMING LIFE
OUTREACH MINISTRIES**

A home where single pregnant women in crisis would find a family that loves them and opportunities to support themselves and their children all wrapped in the love of Jesus. Visit www.rlom.org for more info.

Please send Day of Prayer offerings to the LWML Kansas District Financial Secretary. See [page 7](#) of this publication for contact info.



LUTHERAN WOMEN in Mission
Office of the Vice President of Gospel Outreach
LWML Kansas District
outreach@kansaslwml.org

*How then will they call on him in whom they have not believed?
And how are they to believe in him of whom they have never heard?
And how are they to hear without someone preaching?
And how are they to preach unless they are sent?*
(Romans 10:14-15a)

LWML Kansas District application for Student Financial Aid (SFA) is available for communicant members of Kansas District LCMS congregations enrolled in any LCMS synodical school to prepare for church work and advanced degrees in church work:

- Pastor
- Teacher
- Director of Christian Education
- Director of Christian Outreach
- Director of Parish Music
- Director of Family Life Ministry
- Parish Assistant
- Deaconess

Applications must be made annually. Please indicate if this is a new application or a renewal.

Please indicate the school year for which the application is being made. Also be sure to indicate the appropriate program of study as well as the synodical school.

The applicant's signature gives approval for the synodical school to release enrollment information to LWML Kansas District for consideration of the application.

The deadline of June 1 will be strictly enforced.



LUTHERAN WOMEN in Mission
Office of the Vice President of Gospel Outreach
LWML Kansas District
outreach@kansaslwml.org

STUDENT FINANCIAL AID (SFA) APPLICATION FOR SYNODICAL SCHOOLS ONLY

Check one: ☐ New application ☐ Renewal

DEADLINE IS JUNE 1, 2021

School year 2021-2022: (circle one)

Freshman Sophomore Junior Senior Sem I Sem II Sem III Sem IV Internship Vicar

Name _____ Birthdate _____ ☐ Male ☐ Female
Last First MI

Home Address _____
Street address City State Zip

School Address (opt.) _____

Phone _____ Email address _____

Synodical School _____

Program of study: (circle one)

Pastor Lutheran School Teacher Deaconess Director of Christian Education

Director of Christian Outreach Director of Family Life Ministry Director of Parish Music

Will you be a full-time student? ☐ Yes ☐ No

Will you attend the entire year? ☐ Yes ☐ No

Home congregation _____ City _____

**** My signature below is my approval for the Synodical School above to release enrollment and program of study to LWML Kansas District for consideration of this application. ****

Applicant Signature _____

Date _____

Return to: Pam Popp, Gospel Outreach Committee
745 N. Spruce St.
Gardner, KS 66030
financialaid@kansaslwml.org

**** Submission of a thank you note to the Gospel Outreach Committee grants LWML Kansas District permission to publish it in various LWML Kansas District communications. ****

The Greek philosopher Heraclitus is credited with the quote, “Change is the only constant in life,” and when it comes to bylaws he was spot on. Bylaws need to be steady enough to keep your organization moving in the direction you choose, but flexible enough to allow growth and new ideas. As all the Kansas District zones continuously look at zone bylaws and keep them up to date, please consider including the following changes suggested by the Kansas District Organizational Resources Committee.

BYLAWS

First: Add a Crisis Management Team as a standing or special committee*.

*Remember, a standing committee is elected by the group for a certain amount of time and the bylaws should reflect if they can be re-elected and if the committee will have a representative on the zone Board of Directors. A special committee is appointed (usually by the president or the executive committee) for a specific task and serves only as long as their given task is needed (for example, a specific meeting or event). Information about your Crisis Management Team could include: the number of members on the team, by whom they are chosen, and their necessary qualifications; the way team members will be identified at a function; and the emergency plan to be in place for each function. Many of you already have a person or persons available to help out if there is an emergency during a specific meeting. Include this information in your bylaws in the appropriate places.

Second: Strike the word “society” and insert the word “group.”

This change was passed at the 2019 LWML Convention in Mobile to recognize flexibility in the names of local organizations.

Third: Strike the word “special” in all references to “special appointed personnel.”

This change was passed at the 2019 LWML convention in Mobile to remove unnecessary words from the bylaws.

The last two changes will be easy to do if your bylaws are saved on a computer or zip drive by using the “find” and “replace” buttons on your toolbar.

Zones were notified last fall of the status of their bylaws by Kirsten Hastings, Organizational Resources Committee Chair. If you have any questions about your place in the ratification process or if you need assistance, please contact our committee at resources@kansaslwml.org. We will be glad to assist you in any way we can.

NEW LWML Mission Statement

As Lutheran Women in Mission, we joyfully proclaim Christ, support missions, and equip women to honor God by serving others.

Assisting the women of the LWML to put the new Mission Statement into practice, the following LWML Core Values are provided:

- Christian Women — We live as redeemed children of the Triune God.
- In God’s Word — We live in joyful response to the Holy Scriptures.
- Mission-Focused — We answer God’s call to share His Gospel at home and abroad.
- Embrace Diversity — We are sisters in Christ who value and benefit from each other.
- Servant Leaders — We are called and equipped by God to serve others.



DISTRICT NOMINATING COMMITTEE | Tamara Taylor, Chairman

Hello, I'm Tammy Taylor from Christ The King, Salina, in the Hutchinson Zone. I am the chairman of the LWML Kansas District Nominating Committee, and we need your help to fill the district positions of Vice President of Organizational Resources, Vice President of Special Focus Ministries, Vice President of Christian Life, Vice President of Gospel Outreach, and Treasurer. Officers will be elected at the 2022 Convention in Overland Park. We appreciate any nominations from your zone or LWML group, or anyone outside your own zone or group you know who would be willing to serve as a district officer. Please do what you can to help us fill these positions. Thank you for your prayers considering nominees. Please contact one of the committee members to submit a name (you can submit your own name), or email nominations@kansaslwml.org. The deadline for submitting nominations is September 15, 2021.

Blessings, Tamara Taylor

District Nominating Committee

Tammy Taylor, Chairman, Hutchinson Zone
Chyleen Pauesick, Kansas City CrossRoads Zone
Arlyce Klipp, Linn Zone
Joyce Hagemann, Southeast Zone
LaJean Rinker, Topeka Zone
Brenda Piester, Consultant, Wichita Zone
Pastor Rocco Mallardi, Pastoral Counselor

Then he [Jesus] said to his disciples, "The harvest is plentiful, but the laborers are few; therefore pray earnestly to the Lord of the harvest to send out laborers into his harvest." Matthew 9:37-38

Calling all prayer warriors!!

LWML Kansas District currently has several zones that have offices to fill, including president. Please pray that all zones and groups in the LWML Kansas District will find women to fill offices.

If you have an interest in a leadership position in LWML, please pray for the Holy Spirit to guide you. There are many women and pastors willing to support, teach and help our leaders.

Questions about leading?? Contact anyone on the LWML Kansas District Executive Committee.



2021 LWML CONVENTION UPDATE

At the time of publication of this newsletter, due to COVID-19 restrictions, the Rupp Arena at Central Bank Center, Lexington, Kentucky can only allow a limited number of convention attendees. The restriction caused LWML to shut down registrations at this time. Registrations of all delegates and special guests will be allowed. If you have not already registered, visit www.lwml.org Convention Central page to find the link for the registration waitlist.

LWML President Debbie Larson asks that you continue to pray boldly that the percentage allowed will increase, knowing God hears and answers prayers.

Continue to check out the Convention Central page at www.lwml.org for the latest updates!

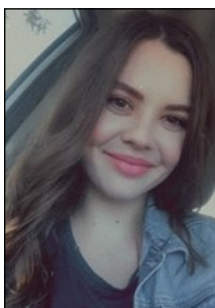
Introducing ... the LWML Kansas District Young Woman Representatives to the 2021 LWML Convention in Lexington, Kentucky!

Please greet, encourage, and pray for them on their journey as Lutheran Women *in Mission*!



Elizabeth Wischer is 26 years old, lives in rural Kansas, and is a member of Faith, Abilene. She has been working at a local restaurant for almost 10 years, and last fall started work as a doctor's office receptionist as well. She enjoys living in the country, working with animals, riding horses, and has a passion for thoroughbred racing. Elizabeth is an enthusiastic member of her church's LWML and is the group's treasurer. She is very excited and grateful to be a YWR for the national convention in Kentucky.

Rochel DeBusk lives in Arma with husband Zach and two kiddos, Ellie (2) and Levi (10 months). The DeBusks have a small herd of Boer goats and enjoy spending most of their time outside. Rachel works at the local bank as a Credit Analyst and Zach farms. Rachel is a member of Immanuel, Hepler. She loves gathering with the WinGS ladies and helping with servant events at the church. She and Zach also enjoy volunteering their time to support local agricultural groups. She is really looking forward to serving as a YWR and can't wait to meet new faces in LWML!



Lydia Kolanowski moved to Kansas in 2018 from Chandler, Arizona. She is a member of Our Redeemer, Herington, and attends Emporia State University as a nursing student. She has had many LWML women of faith influence her, especially her mom. Lydia participates in LWML in any way she can. She has attended LWML conventions since she was a little girl, and always looks forward to them! Lydia is honored to be able to serve as a Young Woman Representative at the upcoming convention.

CHURCH WORKERS IN MISSION

Welcome to these pastors, new to the Kansas District!

Rev. Michael Hofmann, St. Paul, Clay Center, installed October 18, 2020

Rev. Jacob Heine, Faith, Topeka, installed October 24, 2020

Rev. Ben Siebert, St. John, Lincoln, installed November 25, 2020

Rev. Phillip Wolf, Christ, Wathena, installed December 5, 2020

Rev. Joe Barlow, Faith, Abilene, installed January 3, 2021

Rev. Santiago Keinbaum, Trinity, Garden City, installed January 12, 2021



NEWS FROM LWML KANSAS DISTRICT ZONES

LINN ZONE was the first LWML Kansas District Zone to hold a 2021 zone event.

Spring-Time in Winter Event was held at St. John's, Palmer, on January 31. Pastor Joshua Hayes opened with a devotion based on 1 Peter 3:8. The speaker was Rev.



Rev. Jonathan Clausing family working in Tanzania

Jonathan Clausing, who presented his work in Tanzania as a theological educator. He and wife, Anita, and their seven children have been in the United States since March, 2020, due to the pandemic, and are hoping to return to Tanzania soon. Disposable diapers were gathered for the Swaddling Clothes Project located in Greenleaf, Kansas. Allison Lehmann was the district representative.



Marsha Stohs was elected Caring Service Chairman and Linda Beikmann was elected Secretary. A love offering of \$248 was collected. The St. John's ladies group served a delicious baked potato bar followed by a time of fellowship.

+++++


MANHATTAN ZONE met March 13 at St. Pauls, Duluth. Susan Brunkow was the guest speaker. Her topic was *Fruit That Will Last* (John 15:16). The ingathering was for the school's Caring Closet. Members gathered crayons and markers as well as underwear and socks for young boys and girls. Members brought their own sack lunches due to COVID-19 restrictions.

+++++

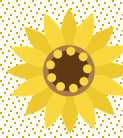
NORTHEAST ZONE will have their Spring Rally on April 10 at Christ Lutheran Church in Wathena. Guest speaker will be Dana Clary from Kaden's Klostet, an organization that provides support and supplies basic needs for foster children. It is based in Troy, Kansas. The NE Zone looks forward to their event!

+++++

SOUTHEAST ZONE is busy preparing for their Spring Event to be held at Zion, Independence, on April 25. The mission presenter will be Rev. Matthew Wood. Rev. Matthew and Kali Wood serve on behalf of LCMS in Indonesia, based in Medan. Matthew works closely with the Indonesian Christian Lutheran Church (GKLI). He helps train pastors and lay leaders by providing resources through educational workshops, translation projects and other efforts in cooperation with the GKLI.



Be sure to send zone or group news to sonshine@kansaslwml.org.
 Pictures are welcome, but not required.
 We love to read/see/hear about what YOU are doing to
Serve the LORD with gladness!



CORRECTION

The Winter, 2021 issue of *The Kansas Sonshine* incorrectly reported that Risen Savior LWML, Basehor held a Numana packing event last fall. That event was actually held by Risen Savior LWML, Wichita.

2021 DATES TO REMEMBER

- June 1— Student Financial Aid applications due
- June 24-27— LWML Convention, Lexington, Kentucky
- July 1— 2022 Convention Banner Designs due
- July 16-17— Kansas Assembly of Leaders (KAOL), Holy Cross, Wichita
- September 1— Mission Grant Applications due
- September 15— Officer Nominations for 2022-2024 biennium due
- October 5-8 — Lutheran World Relief truck pick up
- November 12-13— LWML Kansas District Christian Life Women's Retreat



Don't forget the LWML Prayer Service is available at www.lwml.org. If your LWML group or zone uses the prayer service, be sure to "report" to *The Kansas Sonshine* editor at sonshine@kansaslwml.org.

SAVE THE DATE!

**LWML Kansas District Lutheran Women *in Mission*
Kansas Assembly of Leaders (KAOL)
JULY 16-17, 2021
HOLY CROSS LUTHERAN CHURCH, WICHITA**

Friday afternoon and evening sessions include:

- * Executive Committee
- * Kansas District Committees and District Chairpersons
- * District Appointed Personnel
- * Zone Presidents
- * Zone Committee Chairpersons
- * Zone Pastoral Counselors.

Saturday morning and afternoon sessions include those listed above plus all LWML Group (society) Presidents.

If you would like to be included on the District Prayer Mail (P-mail) group listing, please send your name and current email address to Velma Bass, pmail@kansaslwml.org. The requests/thanksgivings/joys are distributed in "blind copy" manner so that your email address is not shared.

As zones and groups have spring events and elect new officers, don't forget to submit officer changes to Brenda Piester at directory@kansaslwml.org.

