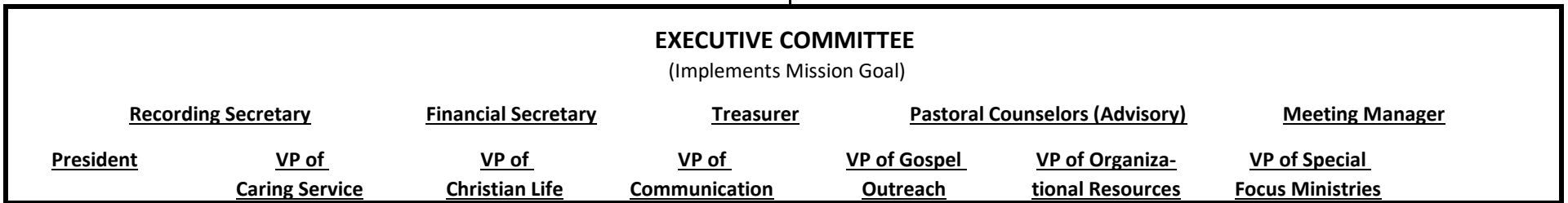
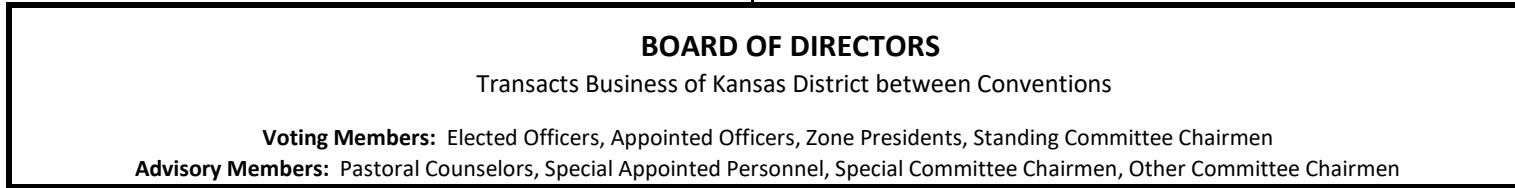
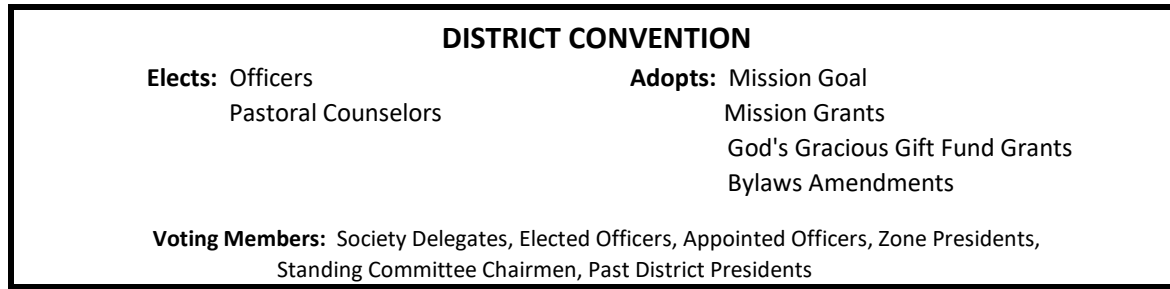
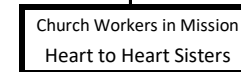
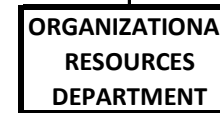
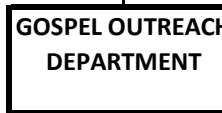
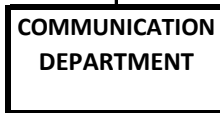
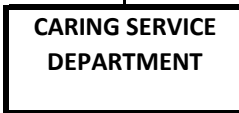


LWML KANSAS DISTRICT STRUCTURE



- | |
|----------------------------|
| APPOINTED PERSONNEL |
| Archivist/Historian |
| Assistant to President |
| Convention Bus Chair |
| Convention Chairmen |
| Endowment Committee |
| Lutheran World Relief |
| Parliamentarian |
| Planner |
| Prayer Mail |
| Short-Term Missions |



COUNSELOR ASSIGNMENTS	
District Convention	
<u>Senior Counselor</u>	<u>Junior Counselor</u>
Appointed Personnel	Caring Service
Christian Life	Communication
Nominating Committee	Gospel Outreach
Special Focus Ministries	Organizational Resources

ZONES	
Herington	Northeast
Hutchinson	Northwest
Kansas City CrossRoads	Southeast
Lincoln	Southwest
Linn	Topeka
Manhattan	Wichita

Updated 02/21 rak