



75 YEARS
KANSAS

You Are Invited...

To Help Celebrate a Special Event!

For those who have received any kind of invitation in the past, one looks forward to the celebration day—whether it be for a family member, a friend, a large group, or a special event such as a baptism, confirmation, graduation or wedding.

We are hoping you will join the Lutheran Women's Missionary League Kansas District in thanking God for the many blessings He has given to each of us through this organization for these past 75 years.

As we share thoughts, memories, pictures, and blessings, may God bless each of you and the Kansas women who have shared their time, talents, mites, and love through the LWML.

Your Sister-in-Christ,
Jo Ann (Knop) Schepmann
Society Archivist-Historian
St. Paul Lutheran-Preston

It is with great joy that we present this LWML Kansas District History booklet to you. It is a "labor of love" to work alongside your faithful Archivist-Historians, Esther Ideker and Judy Carlson. Their attention to detail, and their work in digging through minutes, news articles, and biennium reports, is absolutely remarkable. I thank them for their passionate service to the Kansas District.

We fully recognize that this history is incomplete, and more research needs to be accomplished. It is a work in progress, and regretfully it is not completely finished by this convention. We simply ran out of time. Any errors or omissions are unintentional. Please give any corrections to the current Archivist-Historians of the LWML Kansas District.

Serving, and researching, with gladness
Brenda Piester
LWML Kansas District President, 2016-2020

ORGANIZATION of LUTHERAN WOMEN in the ARKANSAS VALLEY CIRCUIT of KANSAS DISTRICT SYNOD

The following history was written by Mrs. Lola (Rev. Wm. F.) Hilst in two different letters and has been combined into one. – Jo Ann Schepmann

My husband was Pastor at St. Paul's Lutheran Church, Natrona (Preston). It was custom there, that the Pastors had their conference once a month at various congregations, and their wives attended the morning session with communion—then in the afternoon we met in the parsonage for the noon meal, and then the wives visited in the afternoon.

In the Fall of the year, the Pastors and delegates and their wives met together in all day meetings. After one of these inspiring days—Rev. Henning of Holyrood, the zone counselor, and I walked down the church steps together, and he remarked to me that he felt sorry for the women, having to listen to Pastors and delegates all day. He felt it would be nice if the women could meet separately in the afternoon. I could see that separate meetings held in the afternoon could be very profitable and inspiring for the ladies.

Rev. Henning said that next year he would ask the ladies to have their meeting separately. He asked me to invite and inform all societies that in the Fall, the ladies would meet separately in the afternoon. Pastor Henning appointed Rev. Fred Kramer of Ellinwood as our Pastoral Counselor. The meetings were truly a great joy and blessing all the years until the LWML was organized in our Kansas District.

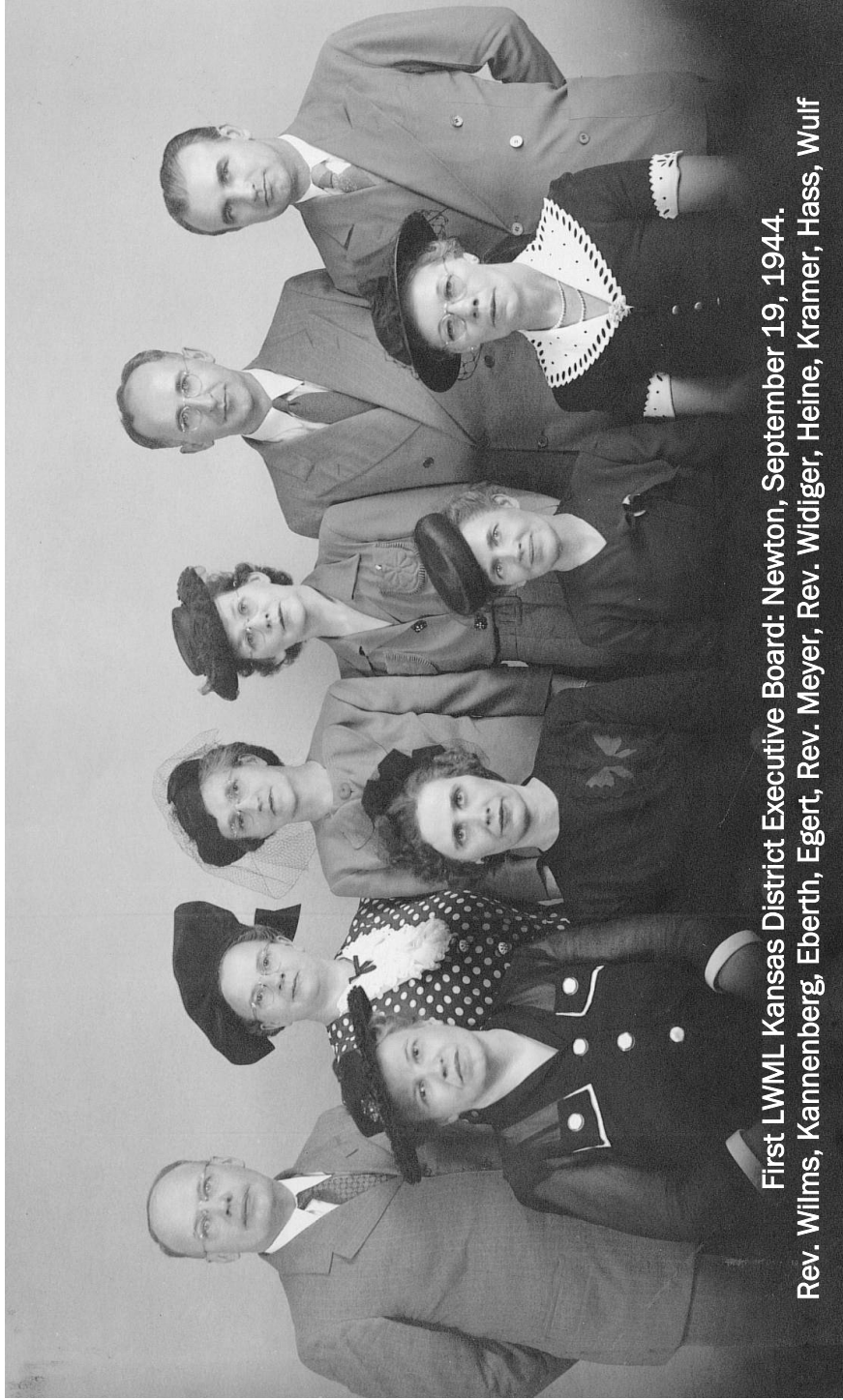
On Armistice Day (November 11, 1940), in convention with the circuit meeting held at Ellinwood, Kansas, a number of Lutheran women under the leadership of Rev. Paul Mehl discussed problems confronting Ladies Aids, and the desire was voiced for some form of a closer organization among the Ladies Aids in our Circuit.

It was soon after this, that I received an invitation from the Ladies Guild of Ft. Wayne, Indiana, informing me of their plan to organize a national Lutheran Women's Missionary League [LWML]. (This was June 1941). They stated that they learned of my promotions in the Kansas District, and they wished to invite me to this organizational meeting as a delegate. This was one of the greatest encouragements in my life, to be a delegate to the three days of organization of the National Lutheran Women's Missionary League with 60 delegates present.

A committee consisting of Mrs. Wm. Hilst of Natrona, Mrs. Wm. Mantly of Nashville, and Mrs. Fred Kramer of Ellinwood, was appointed to give further study to this matter and to see what could be done in the Arkansas Valley Circuit. Visitor O. Henning appointed Rev. Fred Kramer of Ellinwood as Pastoral Advisor to the group. This committee together decided to recommend that in their endeavor, a strong common work program rather than heavy organization be stressed.

As a common task, the Pastoral Advisor suggested that all Lutheran women in our territory who are willing should, by means of Mite Boxes, collect funds for the erection of chapels—in mission congregations of our churches in Kansas—where such chapels are needed. He pointed out that one of the most serious hinderances in our mission work in Kansas arises from the lack of suitable chapels, and that most mission money expended in our district cannot bring maximum returns until we provide the missionaries and their small struggling flock with adequate chapels to which the unchurched can be persuaded to come.

The committee of Mrs. Hilst, Mrs. Mantly and Mrs. Kramer endorsed the plan and called a meeting of the officers of the various Ladies Societies in September 1941. (The Arkansas Valley Circuit congregations were: Chase, Claflin, Ellinwood, Haven, Holyrood, Hutchinson,



First LWML Kansas District Executive Board: Newton, September 19, 1944.
Rev. Wilms, Kannenberg, Eberth, Egert, Rev. Meyer, Rev. Widiger, Heine, Kramer, Hass, Wulf

Nashville, Natrona (Preston), Plevna, and Lyons.) The meeting was held in Our Redeemer Lutheran Church in Hutchinson, and a number of Ladies Aids were represented. The plan to work for the erection of chapels through mite boxes was approved by those present.

The first officers elected of the Ark Valley Circuit were: Mrs. William Hilst, Natrona, President; Mrs. William Mantly, Nashville, Secretary; Mrs. Fred Kramer, Ellinwood, Treasurer.

The next meeting was held in Hutchinson in connection with the circuit meeting on November 16, 1941. Delegates from all the circuits were present. Papers were read by Mrs. Geissler of Natrona and Mrs. Walters of Hutchinson. The Pastoral Advisor presented the Mite Box plan—mentioning that it was being used successfully in other Districts of Synod, notably the Central, Western and Oklahoma Districts.

The fact was also mentioned that Synod, at its meeting in Fort Wayne last June, officially sanctioned the formation of a Synod-wide Federation of Lutheran Women, and that the President of the Kansas District has appointed a committee of three pastors to get this organization underway in Kansas. One of these Pastors, the Rev. S. G. Widiger of Winfield, was present and told the assembly of the plans of his committee, which are very similar to the plan which has been inaugurated in our Circuit.

It was resolved that the Lutheran women in our (Ark Valley) Circuit, who have a head start in this matter should go ahead, while the state committee gets its plans underway.

The first national LWML convention was held in Chicago, Illinois, July 7-8, 1942. The zone voted to send a delegate, and the money that had been collected in Mite Boxes. (Prior to the official organization, money had been given to some needy students at St. John's College at Winfield, Kansas, who were studying to be pastors.) A sum of over \$500 was presented to the newly organized LWML by the delegate, Mrs. William (Lola) Hilst.

Lutheran Women's Missionary League Begins in Kansas *Organized May 16, 1943*

The first Kansas efforts toward organization were made in Wichita on March 30, 1930. There, 170 women, representing the majority of the congregations in Kansas, met and voted to organize "The Lutheran Women's League of Kansas." They also voted to urge individual ladies' organizations in Kansas to join a tentatively planned national organization. However, the Kansas group did not continue to function, since the national organization failed to become a reality following the action in September 1930 of the College of Presidents of Synod. The College advised against the formation of such a national federation...

When the Kansas District LWML was officially organized during the meeting held at St. John's Lutheran Church, Topeka, on May 16, 1943, it climaxed the visions and efforts of leaders who had prayed and worked as an organization of women within the Synod, dedicated to assisting the mission of the Church. There were 169 women present including 57 delegates representing these 37 congregations: Albert, Atchison, Basehor, Canton, Dodge City, Effingham, Ellinwood, Emporia, Fairview, Haven, Hiawatha, Hillsboro, Holton, Holyrood, Hutchinson, Kansas City (Grace, Immanuel, Our Savior, St. Luke's Kansas City, MO), Lawrence, Leavenworth, McFarland, Mission, Netawaka, Newton, Nortonville, Oberlin, Paola, Pratt, Preston, Topeka (St. John's, St. Paul), Wallula, Wichita, White City, and Winfield. When the Kansas District LWML was formally organized, the Ark Valley Circuit members affiliated with the LWML and turned over to the district a sum of \$471.29 which had been collected in their mite boxes.

A constitution was adopted and the following officers were elected:

President:	Mrs. C. A. Hass, Topeka
Vice President:	Mrs. N. F. Holman, Leavenworth
Secretary:	Mrs. P. G. Kannenberg, KC
Treasurer:	Mrs. Wm. Heine Walton
Financial	
Secretary:	Mrs. Rude Eberth, Basehor
Corresponding	
Secretary:	Mrs. Fred Kramer, Ellinwood
Historian:	Mrs. A. R. Timken, Lawrence
Executive Board	
Members:	Mrs. F. A. Eggert, Topeka Mrs. Walter Wulf, Humboldt

The constitution stated as the object of this organization: "To develop and maintain a greater mission consciousness among the Lutheran womanhood of the District, and to gather funds for the support of District mission projects, especially for those for which no adequate provision has been made in the budget."

The first project adopted by the Kansas District LWML was \$100 designated to sponsor a Mission Conference. God has blessed the mites of the Kansas District LWML through the years, with the 36th Biennial LWML Convention in April, 2016, adopting a total mission goal for mission projects and student financial aid and other expenses of \$151,700.00.

The Kansas District LWML Newsletter was initiated to inform the women of news of the LWML District. Over the decades, the newsletter progressed from two pages of 8½ by 11 inch paper printed in the president's home in 1944 through mimeographed issues, to professionally printed issues totaling as many as ten pages and distributed to 7,000 in 1992. Renamed *The Sonshine*, it is also found at: www.kansaslwml.org Using this form of publication frees more mites for mission work.

Kansas LWML moved into the technology age in 1998 when the first website was created. St. Luke's at Manhattan graciously hosted the first site at their address until the District established its own domain address. The current webmaster is Mark Fuchs of Paola. In addition to the *Sonshine*, the website contains a current directory, convention news (both District and National), updates on Mission Grants paid, downloadable financial aid applications and much more. An electronic mail prayer chain was started in 1998 by Past District President, Velma Bass. Petitions, birth and death announcements and thanksgivings are now shared with more than 170 email addresses across the District, and nation. The Kansas District published its first Facebook page in 2012.

The national LWML organization began preparing a "Day of Prayer" service to be used in all societies in 1960. First published in the winter *Quarterly*, the yearly service is now available for downloading from the national LWML website at www.lwml.org. Societies across the District gather an offering for a recipient designated by the Board of Directors. The 2017-2018 Day of Prayer offering was designated for the Fairmount Coffee Company a ministry of the Wichita State University Lutheran Student Center.

A gift of \$500 in the early 1990s was the beginning of the LWML District Special Scholarship Fund. The donor had indicated that all of the money should be gifted to students preparing for the parish ministry. Jane Turner, District President at that time, obtained permission from the Board of Directors to use the money as “seed” money for a fund, where the interest would be added to an amount designated by convention delegates for financial aid for students. Gifts given in thanksgiving, honor and memory have assisted many church workers.

A sizeable gift from an estate caused the Board of Directors to set up a “God’s Gracious Gift Fund.” Donna Wehmeier, President when the gift was received, worked with special committees to write guidelines for expenditure of money by convention vote every two years when money is available. Convention delegates are given the opportunity to choose from a list of possible projects. Funding is made immediately after the convention. Increases come through gifts from estates, memorials and thank offerings. One of the first projects funded in 1999 enabled Diane Jennerich of Shawnee and Angela Jeppesen of Lawrence to spend two weeks in Guinea, West Africa, visiting the Kansas District LCMS Together in Mission (TIM) missionaries.

The Kansas District Lutheran Laymen’s League (LLL) started the Family Retreat. It became a joint venture of the LLL and the LWML in 1966. The Family Retreat, held in late July or early August was first held at Rock Springs 4-H Center south of Junction City and then moved to Camp Webster, near Salina. Each retreat provided fellowship, devotions, speakers, singing, food and free time for all who attended. This retreat ended in 2015.

A Christian Life Retreat sponsored by the Kansas LWML began in 1989. Its purpose was to give women an opportunity for a retreat atmosphere with a Bible Study and Christian fellowship. Under the theme, “Great Is Thy Faithfulness,” the 2017 retreat was held at McPherson.

A committee to promote the work of young women within the Kansas LWML was established in 1990. They planned and executed a program for younger women at the 1992 convention in Wichita. In 2018, the leadership of this program for young women to be involved in LWML is under the Vice President of Special Focus Ministries.

The Kansas District has had two women trained as Heart-to-Heart Sisters leaders, Becky Schotte at the Pittsburgh convention in 2013 and Sherri Rose at the Albuquerque Convention in 2017.

In the early 1960s, the LWML Zones were asked to restructure to follow the lines of the Kansas District LCMS circuits. This meant that the Wichita and Topeka congregations who had worked together for many years were placed in separate zones, as the circuits moved from 14 to 16 in number.

After the 2000 convention, Kansas City North Zone and Kansas City South Zone voted to combine into one. Kansas City CrossRoads Zone was accepted at the 2002 convention in Colby, giving our Kansas District LWML 13 zones.

Following the realignment of the LCMS circuits in 2014, the District again reorganized zones at the 2016 convention. The Great Bend Zone was dispersed into surrounding zones, giving the Kansas District 12 zones.

The Kansas District Mission Statement was written during the 2000-2002 biennium:

“EMPOWERED BY THE HOLY SPIRIT, THE KANSAS DISTRICT LWML WILL NURTURE, MOTIVATE AND PREPARE LCMS WOMEN TO SERVE THE LORD WITH GLADNESS.”

KANSAS DISTRICT CONVENTIONS AND PRESIDENTS:

#	Year	Location	Theme &	President	Attend.
			Bible Text	Hometown	
	1943	Topeka	Organizational Meeting	*Mrs. C.A. Hass Topeka	169
1 st	1946	Newton	The Lord's Work: Our Sole Endeavor	*Mrs. C.A. Hass Topeka	257
2 nd	1948	Wichita	Onward Christian Women	*Renata Mehl Frederick	312
3 rd	1950	Leavenworth	For Christ and His Kingdom	*Molly Boger Ellinwood	310
4 th	1952	Winfield	We Will Serve the Lord	*Nina Buck Kansas City	317
5 th	1954	Hutchinson	Behold Thy Handmaid Luke 1:38	*Estella Bowers Herrington	503
6 th	1956	Topeka	Search the Scriptures	*Louise Eggert Topeka	522
7 th	1958	Colby	The Harvest is Great	*Louise Eggert Topeka	437
8 th	1960	Great Bend	Ye Are the Light of the World Matthew 5:14	*Louise Eggert Topeka	537
9 th	1962	Salina	I Am the Vine, Ye are the Branches	*Helen Noller Manhattan	685
10 th	1964	Dodge City	Bearing the Brand of Christ	*Helen Noller Manhattan	573
11 th	1966	Kansas City	Arise, Shine	*Elnora Briggeman Iuka	542
12 th	1968	Wichita	Jesus Christ, The Same Yesterday, Today, and Forever Hebrews 13:8	*Elnora Briggeman Iuka	529
13 th	1970	Topeka	Jesus Christ is Lord Philippians 2:11	*Cleone Neff Lakin	723
14 th	1972	Hutchinson	Be Strong in the Lord Ephesians 6:10	*Cleone Neff Lakin	477
15 th	1974	Manhattan	Celebrate His Grace Psalm 100:2	*Eunice Wehmeier Salina	500
16 th	1976	Colby	Beautiful Savior, Lord of the Nation	*Eunice Wehmeier Salina	570
17 th	1978	Overland Park	Serve the Lord with Gladness Psalm 100:2	*Joan Sommer Topeka	560

#	Year	Location	Theme &	President	Attend.
			Bible Text	Hometown	
18 th	1980	Garden City	The Lord Reigns: Alleluia	*Joan Sommer Topeka	602
19 th	1982	Wichita	Pray with Joy	*Irene Duitsman Washington	602
20 th	1984	Manhattan	Reflecting God's Love	*Irene Duitsman Washington	690
21 st	1986	McPherson	In All Things Praise His Name	*LaVada Traskowsky Woodbine	610
22 nd	1988	Great Bend	Walking in the Light of the Lord Isaiah 2:5	*LaVada Traskowsky Woodbine	623
23 rd	1990	Topeka	Bring Forth Fruits of Love	*Jane Turner Olathe	595
24 th	1992	Wichita	His Love Endures Forever	*Jane Turner Olathe	606
25 th	1994	Dodge City	The Heaves Declare His Glory	*Donna Wehmeier Paola	562
26 th	1996	Hays	God's Amazing Grace	*Donna Wehmeier Paola	579
27 th	1998	Manhattan	Let the Son Shine in You 2 Corinthians 4:6	Velma Bass Leavenworth	674
28 th	2000	Lawrence	Fear Not: Go Forward in Mission Isaiah 41:10	Velma Bass Leavenworth	577
29 th	2002	Colby	Be Still and Know That I Am God Psalm 46:10	*Lois Llewellyn Lawrence	414
30 th	2004	Wichita	Sing to the Lord a New Song Psalm 98:1	*Lois Llewellyn Lawrence	510
31 st	2006	Salina	Chosen to Serve John 15:16	Judy Carlson Paola	503
32 nd	2008	Topeka	Joy in the Journey Nehemiah 8:10	Judy Carlson Paola	473
33 rd	2010	Junction City	The Lord is My Strength and My Shield Psalm 144:2	Betty Kruse Colby	409
34 th	2012	Lawrence	Stand at the Crossroads Jeremiah 6:16	Betty Kruse Colby	362
35 th	2014	Wichita	On Wings, Like Eagles Isaiah 40:31	Karen Morrison Wichita	363

#	Year	Location	Theme & Bible Text	President Hometown	Attend.
36 th	2016	Manhattan	For Such A Time As This Ephesians 2:10	Karen Morrison Wichita	347
37 th	2018	Hutchinson	Beautiful Feet Isaiah 52:7	Brenda Piester Coats	_____

*Deceased

Well done, thou good and faithful servant. — Matthew 25:23

KANSAS DISTRICT CHRISTIAN LIFE RETREAT THEMES & SPEAKERS

1989	Discipling Woman Seminar	Dr. Erwin J Kolb, Dr. Arno Meyer	Salina
1994	Beyond the Beauty Trap	Annette Dillinger/Deloras Bruncke	Salina
1996	Take Good Care of Yourself	Phyllis Wallace	Salina
1998	Sabbath Rest: The Healing Power of Laughter and Play	Ruth Koch	Salina
2000	Feeling Beautiful—Inside and Out	Naomi Schilling	Wichita
2003	Courageous Living	Gloria Edwards	Wichita
2005	Outrageous Joy	Jan Struck	Wichita
2007	Joy...Is An Inside Job	Phyllis Wallace	Wichita
2009	In the Potter's Hands	Annette Dillinger	Wichita
2011	The Life Cycle of the Christian Woman	Jan Struck	Wichita
2013	Living A Chocolate Life	Deb Burma	Wichita
2015	Expecting His Presence	Danielle Tietjen	Wichita
2017	Great is Thy Faithfulness	Eden Keefe	McPherson

KANSAS DISTRICT PILOT WORKSHOP THEMES

These workshops were presented by the Christian Growth Committee
for the purpose of Leadership Development.

1959	Ye Are the Salt of the Earth	1978	Alive in the Word
1960	As For Me and My House	1979	Sow the Seed
1961	Blessed Are They That Hear	1980	Be a Blessing
1962	First-Fruits of Love	1981	Praying
1963	Called by the Spirit	1982	That We May Know Him
1964	Ministers for a Ministering Church	1983	Lift High the Cross—Go Tell
1965	This I Believe	1984	In Life and Death—Jesus Is Lord
1966	Serve the Lord with Gladness	1985	Sing a New Song
1967	Here I Stand	1986	Reveal Your Son in Me
1968	Help of the Helpless	1987	To the Praise of His Glory
1969	Continue in My Work	1988	Moved by His Love
1970	Walk in the Spirit	1989	What A Friend
1971	We Have Seen and Now Tell	1990	Seek First the Kingdom
1972	I Can Tell	1991	Prepare and Share
1973	Joy	1992	Serve the Lord with Gladness
1974	Living in the Son Together	1993	Empowered to Give
1975	Renewed and Rejoicing	1994	The Word—A Lamp, A Light
1976	God's Power Line	1995	Witness—By God's Design
1977	Called to Care	1996	Saved to Serve

KANSAS ASSEMBLY OF LEADERS (KAOL) THEMES

1997	Here I Am, Lord
1998	Here I Am, Lord: Use Me
1999	Free to L.I.V.E. Free to D.R.E.A.M.
2000	Spiritual Gifts
2001	In League With Our Lord
2002	Images of Baptism
2003	Catch the Vision
2004	Growing Together in Christ
2005	Please Pass the Salt
2006	Chosen to Serve, Chosen to Lead
2007	ROCK: Rest on Christ the King
2008	Joy in Leadership
2009	A Time to Lead
2010	Faith Walk
2011	Being With Jesus—Living on the Edge: Together!
2012	Your Strong Suit
2013	PING-spiration!
2014	Servant Leadership
2015	The Time Is Now...To Sharpen Our Focus
2016	For Such A Time As This—Leadership in Changing Times
2017	For Such A Time as This—Love One Another

SPRING MISSION TOUR SPEAKERS 1980-2013

1963	Mrs. Mueller	Brazil, South America
1964	Mrs. Rodney Dennehl	Hong Kong Missions
1965	Rev. Michael Trinklein	Formosa
1966	Rev. Morris Watkins	Messengers for Christ
1967	Mr. and Mrs. Jim Jorns	Zacapa, Guatemala
1968	Rev. Walter Weber	National Indian Ministry
1974	Rev. Arno and Nina Meyer	Taiwan
1975	Rev. Kenneth Greinke	Lutheran Bible Translators and Africa missions
1976	Wiley and Caryn Scott	Haskell L.I.G.H.T.
1980	Rev. Robert Frerking	Urban Ministries, KC
1981	Rev. Eugene Schmidt	Singles Ministry
1982	Steven Haseley	Wichita State Campus Ministry
1983	Betty Duitsman	Lutheran Bible Translators
1984	Don Romsa	Lutheran Social Services
1985	Anita Dennis	Liberia (Lutheran Bible Translators)
1986	Rev. Garry McClure	Missionary to Guatemala
1987	Rev. Leonard Dale	Philippines
1988	Jennifer Hanson	Taiwan
1989	Rev. Howard Patten	Prayer
1990	Cleone Neff & Karen Glenn	LaSanta Cruz Mission, Garden City
1991	Rev. & Mrs. Luther Meinzen	India
1992	Rev. & Mrs. Winter	Taiwan and Brazil
1993	Jim & Edie Jorns	Children's Christian Concern Society
1994	Rev. Michael May	Urban Ministries
1995	Connie Scheffer, R.N.	Parish Nurse Program
1996	Rev. Richard Kaczor	Lutheran Social Services, Disaster Network
1997	Pastor Intern Victor Samuel	Christianity in India

1998	Bonnie White	Servant Event in Russia with Lutheran Hour Ministries
1999	Gerianne Heim, Kim Marshall Joan Mueller, Ginny Reibhoff, Donna Seeliger, Bonnie White, Brenda Wolters	Servant Event trips to Alaska & Poland
2000	Diane Jennerich & Bonnie White	Servant Event in Guinea
2001	Ernest & Nila Haefner	Deaf Ministries
2003	Rev. Robert Grimm	Rural Ministries
2005	Rev. Dennis & Chris Mason	Mission work in Liberia, Sierra Leone, West Africa
2007	Ken & Muriel Greene	Uncounted Blessings: Lutheran World Relief
2009	Edie Jorns & Angela Jeppesen	Children's Christian Concern Society
2011	Betty Kruse & Nina Borgstadter	Guinea missions

Beginning in 2013, Zones planned mission focus and procured speakers themselves for their zone spring events.



LWML Kansas District Convention
"Onward Christian Women"
Wichita April 28, 1948

JOY IN THE 75-YEAR JOURNEY - A GLIMPSE OF OUR KANSAS DISTRICT LWML FIRST LADIES, THEIR LEADERSHIP AND COMMITMENT IN SERVING THE LORD WITH GLADNESS

1943-1946 Mrs. (C. A.) Elesa Schaaf Hass, Topeka

Elesa was baptized as an infant at Bern. As the first Kansas District LWML President, the first convention manual was dedicated in her honor. The convention offering given to International projects also honored her. The theme of the 1946 convention at Newton was: "The Lord's Work: Our Sole Endeavor," with 257 attending. Mrs. Hass also served on the International LWML Board from 1943-46. Elesa died March 8, 1972, in Topeka, Kansas.



1946-1948 Mrs. (L. H.) Renata Schulz Mehl, Geneseo

Renata was born March 25, 1915, at Ellsworth, Kansas and was baptized on May 15, 1915. She and her husband, Leo, were members of St. Peter's, Holyrood, and later were members of Grace at Lyons. Renata chaired the 1948 Convention at Wichita with the theme: "Onward, Christian Women." Renata died on July 9, 1982, at the age of 67, and is buried at Lyons.



1948-1950 Mrs. (Ray) Mollie Becker Boger, Ellinwood

Mollie was born January 15, 1908, and baptized January 23, 1908, at Hoisington. She was confirmed on June 10, 1923 and married Ray on September 6, 1929. She became a member of Grace, Lyons in 1973. She chaired the 1950 convention at Leavenworth with the theme: "For Christ and His Kingdom." Mollie died December 15, 2001, at the age of 93, in Lyons and is buried at Galacia.



1950-1952 Mrs. (Henry) Nina Irene Krebs Buck, Kansas City

Nina was born in Coffeyville. She was an elementary school teacher in Independence and a church organist. Nina presided over the 1952 convention held at Winfield with 317 attending under the theme: "We Will Serve the Lord." Our fourth Kansas District LWML President was the first to be called by her first name. She died on August 7, 1994, in Fairway at the age of 86. Services were at Our Saviour in Kansas City.



1952-1954 Mrs. (Verle) Estella Engle Bowers, Herrington

Estella was born at Lost Springs, the daughter of August and Clara Engle, and was baptized at St. John's, Lincolnville, on October 31, 1909. She was married to Verle on February 1, 1936. They were members of Our Redeemer, Herington. Estella chaired the 1954 convention at Hutchinson with the theme: "Behold Thy Handmaid." Estella died on October 27, 1990. Her service was at St. Paul's, Herington, Kansas.



1954-1960 Mrs. (F. A.) Louise List Eggert, Topeka

Louise was baptized on May 2, 1896, at St. Paul's, Wittenberg, WI. She was the daughter of the Rev. Otto and Mrs. List. As a member of St. John's, Topeka, Louise chaired the first organizational meeting of the Kansas District LWML in 1943. Mrs. Eggert served as Kansas District LWML President for six years and chaired three conventions: 1956 at Topeka, with the theme: "Search the Scriptures," 1958 at Colby, with the theme: "The Harvest is Great," and 1960 at Great Bend, with the theme: "Ye Are the Light of the World." Mrs. Eggert served as International LWML secretary. She died October 17, 1989, at age 93.



1960-1964 Mrs. (William) Helen Noller, Manhattan



Helen was born on July 4, 1911 and was baptized at St. John's in Topeka. Helen was elected Kansas District LWML President at the convention in Great Bend. She presided at the 10th Biennial International Convention in Kansas City in 1963. At the occasion of the Kansas LWML 60th Anniversary celebration in Colby, Helen wrote greetings to the convention

attendees from her home in Puyallup, WA, where she had moved in 1982 to be near her children and grandchildren. Helen grieved the loss of her husband, William, who died in 1991 and a daughter who died of a brain tumor in 1994. During her term, Helen chaired two conventions: 1962 at Salina with the theme: "I Am the Vine, Ye are the Branches, 685 attending, and 1964 at Dodge City, with the theme: "Bearing the Brand of Christ." She died in the state of Washington on May 28, 2002, at the age of 91 and was buried in Topeka, Kansas near her husband.

1964-1968 Mrs. (Ray) Elnora Hilst Briggeman, Iuka

Elnora was born November 14, 1920, at Meade, the daughter of Rev. William and Lola Hilst. She was baptized on December 12, 1920, by her father. She was a music major graduate of the University of Kansas and played organ. Elnora was President at the time of the 25th Anniversary of the Kansas District LWML.



Elnora was talented in writing devotions and wrote many of the early *Mustard Seeds*. She was a 1979 candidate for International President. During her Kansas District LWML Presidency, she had the opportunity to present the missions project to the Kansas District, which helped fund the first boarding school opened in Zacapa, Guatemala, with the help of Children's Christian Concern Society through Jim and Edie Jorns. Elnora was a member of St. Paul's at Preston. Elnora suffered a heart attack in June of 1981, and following a year of illness, died on June 2, 1982, at the age of 62.

1968-1972 Mrs. (Donald) Cleone Kauffeld Neff, Lakin



Cleone was baptized on the day of her birth, April 19, 1926, by her father, missionary Paul Kauffeld, at Kodiakanal, South India at Afton on Loch End. Her grandmother, a medical missionary, delivered her. Her grandparents were also missionaries in Northwestern India. Cleone and her mother came to the U. S. in 1942, while her father remained in India as a

missionary until 1945. Highlights of her LWML presidency were several new and challenging aspects of missions: The adoption of our first overseas mission project—to the Philippines, the challenge of congregational ministry to the mentally handicapped, the introduction of the braille and sight-saving ministry of Lutheran Braille Workers. During her term, the coffee break at conventions was replaced with a stretch and song break. Cleone stated: “Overall, being actively involved in God’s mission with so many dedicated and talented sisters of the faith was such a blessing!” Cleone served during the 25th year of the Kansas District LWML existence and chaired two conventions. The largest attendance ever recorded at 723 in 1970 at Topeka, with the theme “Jesus Christ is Lord.” She also chaired the 1972 convention in Hutchinson, “Be Strong in the Lord.” Cleone passed away on November 5, 2017 after a long illness. Her funeral was held on November 11, 2017 at Immanuel in Lakin, Kansas.

1973-1976 Mrs. (Erwin) Eunice Bosse Wehmeier, Salina

Eunice was born January 10, 1915, and baptized on March 26, 1915, at St. Luke’s, Wheaton. She was confirmed there on April 13, 1930. After her marriage to Erwin in 1933, they moved to Salina in 1935, where both were active in Trinity Lutheran Church. In 1939, she and her husband started the Wehmeier Pie Shop, which they operated until their retirement



in 1975. Eunice always said that their vocation was to “serve the Lord” and the pie shop was just to help finance it. Eunice was President at the time of the 15th Biennial Convention in

Manhattan in 1974 under the theme: “Celebrate His Grace.” She also chaired the Colby Convention in 1976, where the theme was “Beautiful Savior, Lord of the Nations.” Eunice died at the age of 65 on August 8, 1980, with internment at Roselawn Memorial Park, Salina. Her memorials were in part to the LWML Mite Box Projects.

1976-1980 Mrs. (Art) Joan Dujardian Sommer, Topeka

Joan served as President at the 1978 Overland Park Convention, with the theme: “Serve the Lord with Gladness” and the Garden City convention in 1980 under the theme: “The Lord Reigns: Alleluia!” Joan wrote from Florida in 2002, to the District Convention attendees at Colby: “Be Still and Know that I am God.” She said, “What a wonderful theme for your 29th Biennial Convention. So many years since I was elected District President in 1976 in Colby...so many memories flood my mind as I hold you all in prayer for these days...so many times I have had to be still and know that God is. You have a special place in my heart, forever!” Joan lived for a while in Lindsborg, Kansas and then moved to Oviedo, Florida, to be near her mother. At the time of her husband’s sudden death in the 1980’s, Joan gave a strong public witness to her faith. Joan died at the age of 77, on February 24, 2005, in Florida.



1980-1984 Mrs. (Kenneth) Irene Tewes Duitsman, Washington

Irene was baptized at St. John’s, Palmer, on March 22, 1931, and was confirmed on March 25, 1945. She became a charter member of the LWML at Zion, Linn, in 1952. Irene served during the 1982 Wichita convention with the theme: “Pray with Joy,” and the 1984 20th Biennial convention in Manhattan, with the theme: “Reflecting God’s Love,” when 690 attended. Irene said, “I cannot pinpoint any one most memorable time for me while I was District President, but I can say that the four years I was privileged to serve in that capacity were among the best years of my life...Being with so many



Christian people during that time, and serving our Lord, was a great blessing for me. I felt very inadequate, but knew I had the Lord by my side the whole time I was serving.”

1984-1988 Mrs. (Richard) LaVada Vahscholtz Traskowsky, Woodbine

LaVada was baptized on October 28, 1928. She became a member of the local “Ladies Aid” in 1953 which became affiliated with the LWML in 1957. During her presidency, LaVada chaired the 1986 convention at McPherson under the theme: “In All Things, Praise His Name,” and the 1988 convention at Great Bend, “Walking in the Light of the Lord,” with 623 in attendance. LaVada stated: “All of my years in the LWML have been meaningful, so it would be terribly hard to pick the most meaningful time. The years I was privileged to spend in the International LWML were especially meaningful to me, and I still have friends all over the country who are my very special friends. I thank the Lord for the privilege of serving so many years in the LWML.” LaVada passed away on April 12, 2011.



1988-1992 Mrs. (Harry) Jane Jackson Turner, Olathe



Jane was born April 13, 1927, in Omaha, NE. Her presidency covered the conventions of 1990 in Topeka under the theme: “Bring Forth Fruits of Love,” and the Wichita 50th Anniversary convention in 1992 with “His Love Endures Forever.” A special memory of hers was the foresight that caused a \$500 memorial in the late 1980s to be used as the beginning of our Kansas District Special Scholarship Fund. The fund is used to supplement our biennial grants for financial aid to students preparing for full-time parish ministry. She co-chaired the International Convention at Kansas City in 1995, and then served on the International LWML Executive Committee. She also served on the Kansas District LCMS BOD and Lutheran Braille Workers BOD. Jane died March 4, 2007, at age 79. Her memorial services were at Redeemer Lutheran, Olathe.

1992-1996 Mrs. (Robert) Donna *Johnson* Wehmeier, Paola

Donna was born June 19, 1931, in Alta Vista. She was treasurer, organist and Coordinator of Music at her church, First Lutheran, at Paola. A long-time member of the LWML, she chaired the 1994 convention at Dodge City, with the theme: "The Heaven's Declare His Glory," and the 1996 Hays convention with the theme: "God's Amazing Grace." It was during Donna's



presidency that "God's Gracious Gift Fund," was established to provide the structure to disperse monies for special grants. Donna served as the God's Gracious Gift Fund Committee's first chairman. She attended the Colby convention in 2002 and enjoyed a reunion as one of six LWML Kansas District Presidents in attendance. She was married to Robert for 51 years. Donna went to be with the Lord on April 29, 2002, at the age of 71.

1996-2000 Mrs. (Larry) Velma *Huetig* Bass, Leavenworth

Velma was born at Coleridge, Nebraska. She was baptized, confirmed and married to Larry at Immanuel, Laurel, NE. Velma joined LWML at Holy Cross in Lincoln, NE, in 1959 and continues as a member at St. Paul's Ladies Aid, Leavenworth, Kansas. She serves her congregation as organist and sings in the Praise Team. Velma's presidency was during the 1998 Manhattan convention under the theme: "Let the Son Shine in You," with 674 in attendance and the 2000 Lawrence convention with the theme: "Fear Not: Go Forward in Mission." Velma says: "All of the four years (of my presidency) were full of highlights, but the biggest gift was working with Dale Henry to get the Kansas District LWML website up and running." Velma has served as a Mission-Ministry Vision Leader and has kept the electronic prayer-mail for Kansas District LWML connecting prayer requests with our membership, since 1999.



2000-2004 Mrs. (H.E. “Lew”) Lois *Nieman Llewellyn*, Lawrence



Lois and her twin sister, Doris, were born August 10, 1930, and were baptized at St. Matthew's, Nortonville, when they were a week old. Lois served the LWML in her presidency at the 2002 Colby convention with the theme: “Be Still and Know That I Am God,” and the 2004 Wichita convention under the theme: “Sing to the Lord a New Song.” Lois said of her presidency: “There

were so many wonderful moments. It was amazing for me to see how God works when the answers came and things fell into place. It was my privilege to meet so many wonderful talented women who demonstrated to me their love for their Savior through the mission of the LWML. It was also my privilege to serve as President when we adopted our Kansas LWML Mission Statement in 2001.” The Mission Statement adopted is: “Empowered by the Holy Spirit, the Kansas District LWML will nurture, motivate and prepare LCMS women to serve the Lord with gladness.” Lois served as co-chairman of the 2008 Kansas District Convention in Topeka. Lois passed away April 22, 2015 in Lawrence.

2004-2008 Mrs. (Ed) Judy *Huebner Carlson*, Paola

Judy was born in Falls City, NE May 29, 1945, and was baptized when she was three weeks old. She attended St. Paul's Lutheran School and was confirmed into the Christian faith as an eighth grader at St. Paul's. She graduated in 1968 from Concordia Teacher's College (now Concordia University, Seward, NE) with a degree in education and a Lutheran Teacher's diploma.



She became involved in LWML shortly after moving to Paola in 1968 to teach at First Lutheran School. She has been a faithful member of LWML for 50 years. Judy chaired the 2006 Salina District convention with the theme: “Chosen to Serve,” and the 2008 Topeka convention with the theme: “Joy in the Journey.” Judy says, “The highlight or best gift of my presidency is the joy I have received from serving my Lord through the LWML with all the other women in Kansas. The

bond of love and friendship is real. I thank God for blessing me with that. A very exciting moment came at the end of 2004, about seven months into my term, when our district reached an all-time high in mite giving. I was privileged to sign the voucher for the largest twenty-five (25) percent dollar amount to LWML for mites. Another accomplishment that has been achieved is the increased use of electronic mailing, which has helped cut expenses and accomplish many tasks much more quickly and easily than in earlier years.”

2008-2012 Mrs. (David) Betty Sprehe Kruse, Colby

Betty was born February 7, 1947, in Illinois and was baptized on Feb. 23, 1947 at the Sprehe family home church in Buckley, Illinois. Her family moved to Oakley, Kansas when she was five, and all of her elementary and secondary education was there. Her Confirmation was April 30, 1961, at Immanuel Lutheran, Oakley. She graduated from St. John’s College, Winfield, Kansas, and Concordia, Seward, NE and then taught at Racine, Wisconsin Lutheran High School and Trinity Lutheran School in Winfield before giving her time to family and volunteer activities. She first joined LWML in 1972 in Winfield and attended her first international convention in 1973, when her mother was a delegate to the Mobile, Alabama convention. Betty chaired the 2010 Convention in Junction City with the theme: “The Lord is my Strength and My Shield” and the 2012 Convention in Lawrence with the theme “Stand at the Crossroads.” “The highlight of my presidency was traveling Kansas and getting to know the LWML members – especially on the spring tour that Nina Borgstadter and I completed after representing Kansas LWML and the Kansas District LCMS on a mission trip to Guinea, West Africa. We continued and improved using technology and began society president involvement in KAOL during my tenure. Serving the Lord through LWML and the friendships made, have been pure joy.”



2012-2016: Mrs. (John) Karen Jones Morrison, Wichita



Karen was born and raised in Wichita, baptized in the Methodist Church and was confirmed at Bethany Lutheran Church at the age of 13 when her family joined the Lutheran faith. From that time, Karen, was very active in youth group as a teenager, then as a grown woman teaching Sunday School and serving as a High School Youth Group Volunteer, attending two National

Youth Gatherings, all stepping stones into “Serving the Lord with Gladness” through LWML. Karen chaired the 2014 Kansas District Convention at Wichita with the theme: “On Eagles Wings” and the 2016 Convention at Manhattan with the theme: “For Such a Time as This.” Karen says, “The highlights of my four years as president are many: Driving across the state to speak at Zone events; LWML sisters from Kansas (my purple peeps); representing Kansas at the national LWML meetings making even more LWML sister friends from all across the USA and discovering ‘the rest of the story’ about the awesomeness of LWML and its mission; writing President messages for the *Sonshine* newsletter and having people tell me they were touched by them; bylaws (yes, bylaws, truly); saying goodbye to a beautiful woman God gave me the privilege to know and serve alongside, Becky Schotte; watching as two fantastic groups of women planned and put together two life-blessing conventions; standing at the podium and looking out at all your faces as you enjoyed the fruits of their labors in Wichita and Manhattan; sharing this experience with the only man who could in fact enhance it, John, my husband and the First Purple; Growing, Growing, Growing – because of this job and because God the Father, and Jesus Christ, His Son were at the center of everything that I was a part of. I am now a stronger woman in my faith and in my life. I thank each of you for allowing me to be your Servant Leader for those most wonderful four years.” Karen and John are retiring in 2018 to live full-time in their 5th wheel RV, traveling the continental United States, but no matter where they park, Kansas will always be home.

2016-2018 Mrs. (Ronald) Brenda Schepmann Piester, Coats

Brenda was born on February 24, 1955, the first daughter of Nathan and JoAnn Schepmann. She was baptized on Easter Sunday, April 10, 1955, and attended first through seventh grade at her church's Lutheran parochial school. Brenda was confirmed on May 18, 1969, and graduated with an A.A. degree from St. John's College in Winfield in 1975. On June 13, 1975, she married Ron, and they have lived on the Piester Ranch since then. These life events – baptism, education, confirmation, and wedding-all occurred at St. Paul Lutheran Church at Natrona (Preston), Kansas. Piester earned her Master of Science degree from Kansas State University in 1982 and taught gifted education in the Pratt and Skyline school districts. She retired in 2017 after 40 years of teaching in the public schools. It is a joy for Brenda to be involved and serve in LWML with women from across Kansas and beyond. Piester observes: "Women are the same everywhere. We have our joys and sorrows, celebrations and challenges, and each has been blessed with unique gifts and special talents. I have not met anyone who does not truly love to serve our Lord through helping others. It is exciting to learn from each other, as we promote the objectives of LWML – mission education, mission inspiration, mission service and mission grants. Lutheran Women in Mission fits so well with what women just naturally like to do!" Brenda is currently active in the mission plant, Ascension Lutheran Church, in Pratt. She continues to teach in Vacation Bible School, Sunday School, Midweek, and Women's Bible Study. Brenda is chairing the 2018 Kansas District Convention in Hutchinson with the theme: "Beautiful Feet."



“MAKE A JOYFUL NOISE UNTO THE LORD, ALL YE LANDS. **SERVE THE LORD WITH GLADNESS:** COME BEFORE HIS PRESENCE WITH SINGING. KNOW YE THAT THE LORD HE *IS* GOD.”

PSALM 100:1-3A

KANSAS DISTRICT LWML 'FIRSTS' THROUGH THE YEARS

- ◆ Kansas District LWML began at St. John's Lutheran Church, Topeka, Kansas, May 16, 1943.
- ◆ First Kansas District Project was \$100.00 to help finance a Mission Conference.
- ◆ One of the First Mission Grants was to Pilgrim Deaf Church, Kansas City, MO, for \$250
- ◆ First Kansas District LWML Newsletter 1944
- ◆ Joan Stengel, first young woman to receive deaconess scholarship of \$500.00
- ◆ Leadership Training was introduced in 1955
- ◆ Financial aid to students preparing for full time parish ministry began in 1957
- ◆ First Day of Prayer Service 1960: the offering was to Lutheran World Relief
- ◆ In 1962 LWML Kansas. District President, Helen Noller, invited President Dwight Eisenhower to the 1962 LWML District Convention. A telegram of regret was received.
- ◆ First Spring Tour Speaker 1963
- ◆ First Lutheran Family Retreat 1966
- ◆ First Kansas Bus Tour to convention was 1967 to Washington, D.C. Mrs. Tony Unger was Bus Tour chairman.
- ◆ First Youth Delegates were sent to Detroit LWML convention in 1983.
- ◆ First All District Lutheran World Relief pick up began in 1984.
- ◆ During LWML President Jane Turner's presidency (1988-1992) the God's Gracious Gift Fund was named and received its first \$500.00.
- ◆ The first Christian Life Retreat was in 1989.
- ◆ Committee on Young Women began in 1990
- ◆ First Effective Society Planning training in Colby 1992
- ◆ An electronic email prayer chain began in 1998.
- ◆ The Kansas District LWML website was established in 1998.
- ◆ Facebook promotions and networking began in 2012.

KANSAS DISTRICT LWML OFFICERS 1943 – 2018

1943-1946

President – Mrs. C. A. Hass, Topeka

Vice President – Mrs. N. F. Holman, Leavenworth

Recording Secretary – Mrs. P. G. Kannenberg, Kansas City, Kansas

Treasurer – Mrs. Wm Heine, Walton

Financial Secretary – Mrs. Rude Eberth, Basehor

Corresponding Secretary – Mrs. Fred Kramer, Ellinwood

Historian – Mrs. A. R. Timken

Board Members – Mrs. F. A. Eggert, Topeka and Mrs. Walter Wulf, Humboldt

President of Kansas District LCMS – Rev. W. H. Meyer *appointed a*

committee of three – Rev. S. G. Widiger, Rev. E. H. Wilms, and Rev. Arnold

Meyer – *served as counselors for many years.*

1946-1948

President – Mrs. L. H. Mehl, Geneseo

Vice- President – Mrs. N. F. Holman, Leavenworth

Recording Secretary – Mrs. P. G. Kannenberg, Kansas City, Kansas

Treasurer – Mrs. Wm. Heine, Walton

Financial Secretary – Mrs. Elisa Eberth, Basehor

Corresponding Secretary – Mrs. Fred Kramer, Ellinwood

Historian – Mrs. W. H. Wenthe, Winfield

Board Members – Mrs. F. A. Eggert, Topeka and Mrs. Walter Wulf, Humboldt

Pastoral Counselors – Rev. S. G. Widiger, Rev. E. H. Wilms, Rev. Arnold Meyer

1948-1950

President – Mrs. Roy Boger, Ellinwood

Vice President – Mrs. L. H. Mehl, Geneseo

Recording Secretary – Mrs. E. R. Asman, Wichita

Treasurer – Mrs. George Walter, Hutchinson

Financial Secretary – Mrs. F. A. Eggert, Topeka

Corresponding Secretary – Mrs. Fred Lawrence, Leavenworth

Historian – Mrs. W. H. Wenthe, Winfield

Board Members – Mrs. C. A. Hass, Topeka and Mrs. N. F. Holman,
Leavenworth

Pastoral Counselors – Rev. S. G. Widiger, Rev. E. H. Wilms, Rev. Arnold Meyer

1950-1952

President – Mrs. Henry Buck, Kansas City, Kansas

Vice President – Mrs. Verle Bowers, Herington

Recording Secretary – Mrs. Armin Gall, Bellefont

Treasurer – Mrs. George Walter, Hutchinson

Financial Secretary – Mrs. F. A. Eggert, Topeka

Corresponding Secretary – Mrs. Clarence Moulden, Leavenworth

Historian – Mrs. H. W. E. Buss, Lyons

Board Members – Mrs. N. F. Holman, Leavenworth and Mrs. Tony Unger, Oberlin

Pastoral Counselors – Rev. S. G. Widiger, Rev. E. H. Wilms, Rev. Arnold Meyer

1952-1954

President – Mrs. Verle Bowers, Herington

Vice President – Mrs. F. A. Eggert, Topeka

Recording Secretary – Mrs. Armin Gall, Bellefont

Treasurer – Mrs. Alfred Tonn, Haven

Financial Secretary – Mrs. Raymond Krusemark, Pratt

Corresponding Secretary – Mrs. William Noller, Manhattan

Historian – Mrs. H. W. E. Buss, Lyons

Board Members – Mrs. Henry Buck, Kansas City, MO and Mrs. George Walter, Hutchinson

Pastoral Counselors – Rev. S. G. Widiger, Rev. E. H. Wilms, Rev. Arnold Meyer

1954-1956

President – Mrs. F. A. Eggert, Topeka

Vice President – Mrs. Martin Lohitz, Independence

Recording Secretary – Mrs. Walter Sohl, Herkimer

Treasurer – Mrs. Alfred Tonn, Haven

Financial Secretary – Mrs. Ray Krusemark, Pratt

Corresponding Secretary – Mrs. William Noller, Manhattan

Historian – Mrs. Ed. Armburst, Ellsworth

Board Members – Mrs. H. W. Buck, Kansas City, MO and Mrs. Armin Gall, Bellefont

Pastoral Counselors – Rev. S. G. Widiger, Rev. E. H. Wilms, Rev. C. L. Strube

1956-1958

President – Mrs. F. A. Eggert, Topeka

Vice President – Mrs. Armin Gall, Offerle

Recording Secretary – Mrs. E. Rodehorst, Wichita

Treasurer – Mrs. Ray Letholt, Pratt

Financial Secretary – Mrs. Paul Schroedel, Parsons

Corresponding Secretary – Mrs. Neil Schrum, Manhattan

Historian – Mrs. Louis Lambring, Arkansas City

Board Members – Mrs. Alfred Tonn, Haven and Mrs. William Noller, Manhattan

Pastoral Counselors – Rev. S. G. Widiger, Rev. E. H. Wilms, Rev. C. L. Strube

1958-1960

President – Mrs. F. A. Eggert, Topeka

Vice President – Mrs. William Noller, Manhattan

Recording Secretary – Mrs. L. B. Neff, Wichita

Treasurer – Mrs. Ray Letholt, Pratt

Financial Secretary – Mrs. Paul A. Schroedel, Parsons

Corresponding Secretary – Mrs. Edgar VanEaton, Oakley
Historian – Mrs. R. A. Hickey, Liberal
Board Members – Mrs. Alfred Tonn, Haven and Mrs. Ray Krusemark, Pratt
Pastoral Counselors – Rev. S. G. Widiger, Wichita, Rev. Clarence Strube, Ellsworth, Rev. A. Sabo, Wichita

1960-1962

President – Mrs. William Noller, Manhattan
Vice President – Mrs. C. O. Gercken, Garden City
Recording Secretary – Mrs. L. B. Neff, Wichita
Treasurer – Mrs. Ray Waters, Colby
Financial Secretary – Mrs. Ray Letholt, Pratt
Corresponding Secretary – Mrs. Walter Schimke, Kansas City
Historian – Mrs. R. A. Hickey, Liberal
Board Members – Mrs. F. A. Eggert, Topeka and Mrs. Ray Briggeman, Iuka
Pastoral Counselors – Rev. Clarence Strube, Ellsworth, Rev. Andrew Sabo, Overland Park, Rev. Victor Polley, Hays

1962-1964

President – Mrs. William Noller, Manhattan
Vice President – Mrs. C. O. Gercken, Garden City
Recording Secretary – Mrs. Richard Traskowsky, Woodbine
Treasurer – Mrs. Ray Waters, Colby
Financial Secretary – Mrs. Ray Letholt, Pratt
Corresponding Secretary – Mrs. Walter Schimke, Kansas City
Historian – Mrs. L. H. Mehl, Geneseo
Board Members – Mrs. Ray Briggeman, Iuka and Mrs. L. B. Neff, Wichita
Pastoral Counselors – Rev. Andrew Sabo, Overland Park, Rev. Victor Polley, Hays, Rev. Victor Dahlke, Ellinwood

1964-1966

President – Mrs. Raymond Briggeman, Iuka
1st Vice President – Mrs. Walter Schimke, Kansas City
2nd Vice President – Mrs. Carl Froetschner, Offerle
Recording Secretary – Mrs. Richard Traskowsky, Woodbine
Treasurer – Mrs. Arthur Liggatt, Lincoln
Financial Secretary – Mrs. Ray Waters, Colby
Corresponding Secretary – Mrs. William Hilst, Iuka
Historian – Mrs. L. H. Mehl, Geneseo
Board Members – Mrs. Walter Sohl, Marysville and Mrs. C. O. Gercken, Garden City
Pastoral Counselors – Rev. Victor Dahlke, Ellinwood, Rev. A. L. Schudde, Paola, Rev. Robert Jackson, Newton

1966-1968

President – Mrs. Raymond Briggeman, Iuka

1st Vice President – Mrs. W. H. Schimke, Kansas City
2nd Vice President – Mrs. Walter Sohl, Marysville
Recording Secretary – Mrs. Richard Traskowsky, Woodbine
Treasurer – Mrs. Walter Asmann, Wichita
Financial Secretary – Mrs. Ray Waters, Colby
Board Members – Mrs. Robert Wehmeier, Paola and Mrs. L. H. Mehl, Geneseo
Pastoral Counselors – Rev. Victor Dahlke, Ellinwood, Rev. A. L. Schudde, Paola, Rev. Donovan Huwe, Kansas City

1968-1970

President – Mrs. Donald Neff, Lakin
1st Vice President – Mrs. Ray Waters, Colby
2nd Vice President – Mrs. Walter Sohl, Marysville
Recording Secretary – Mrs. Arthur Liggatt, Lincoln
Treasurer – Mrs. Richard Traskowsky, Woodbine
Financial Secretary – Mrs. E. L. Kleeman, Lakin
Corresponding Secretary – Mrs. Irwin Algrim, Kansas City
Historian – Mrs. A. F. Unger, Oberlin
Board Members – Mrs. Robert Wehmeier, Paola and Mrs. L. H. Mehl, Geneseo
Pastoral Counselors – Rev. Victor Dahlke, Ellinwood, Rev. Donovan Huwe, Kansas City, Rev. Lester Dumer, Lyons

1970-1972

President – Mrs. Donald Neff, Lakin
1st Vice President – Mrs. Ray Waters, Colby
2nd Vice President – Mrs. Harold Turner, Wichita
Recording Secretary – Mrs. Arthur Liggatt, Lincoln
Treasurer – Mrs. Richard Traskowsky, Woodbine
Financial Secretary – Mrs. Kenneth Duitsman, Washington
Corresponding Secretary – Mrs. Calvin Kandt, Salina
Recording Secretary – Mrs. Irvin Algrim, Kansas City, Kansas
Historian – Mrs. A. F. Unger, Manhattan
Board Members – Mrs. Claud Gulley, Bucklin, and Mrs. Johanna Lobitz, Manhattan
Pastoral Counselors – Rev. Donovan Huwe, Kansas City, Rev. Lester Dumer, Lyons, Rev. Donovan Sprick, Haven

1972-1974

President – Mrs. Erwin Wehmeier, Salina
1st Vice President – Mrs. Art Sommer, Topeka
2nd Vice President – Mrs. Harold Turner, Wichita
Recording Secretary – Mrs. Irvin Algrim, Kansas City
Treasurer – Mrs. Richard Traskowsky, Woodbine
Financial Secretary – Mrs. Kenneth Duitsman, Washington

Corresponding Secretary – Mrs. Calvin Kandt, Salina
Historian – Mrs. A. F. Unger, Oberlin
Board Members – Mrs. Claud Gulley, Kansas City and Mrs. Johanna Lobitz, Manhattan
Pastoral Counselors – Rev. John F. Domsch, Sabetha, Rev. Donovan Sprick, Haven, Rev. Alvin H. Glinsman, Shawnee

1974-1976

President – Mrs. Erwin Wehmeier, Salina
1st Vice President – Mrs. Art Sommer, Topeka
2nd Vice President – Mrs. Harold Turner, Wichita
Recording Secretary – Mrs. Irwin Algrim, Garden City
Treasurer – Mrs. Elmer Wetzel, Dodge City
Financial Secretary – Mrs. Kenneth Duitsman, Washington
Corresponding Secretary – Mrs. Calvin Kandt, Salina
Historian – Mrs. A. F. Unger, Manhattan
Board Members – Mrs. Claud Gulley, Bucklin and Mrs. Johanna Lobitz, Manhattan
Pastoral Counselors – Rev. Donovan Sprick, Haven, Rev. Darrel F. Thalman, Greenleaf

1976-1978

President – Mrs. Art Sommer, Topeka
1st Vice President – Mrs. Kenneth Duitsman, Washington
2nd Vice President – Mrs. Richard Traskowsky, Woodbine
Recording Secretary – Mrs. Sheldon Brandis, Garden Plain
Treasurer – Mrs. Elmer Wetzel, Dodge City
Financial Secretary – Mrs. Georgeanna Sohl, Marysville
Corresponding Secretary – Mrs. Duane Brunkow, Topeka
Board Member – Mrs. Bill Brown, Dwight and Mrs. Irwin Algrim, Garden City
Pastoral Counselors – Rev. Earl Zimmerman, Ottawa, Rev. Mark Hoelter, Hepler

1978-1980

President – Mrs. Art Sommer, Topeka
1st Vice President – Mrs. Kenneth Duitsman, Washington
2nd Vice President – Mrs. Bill Brown, Dwight
Recording Secretary – Mrs. Sheldon Brandis, Garden Plain
Treasurer – Mrs. Harold Guhn, Tipton
Financial Secretary – Mrs. Georgeanna Sohl, Marysville
Corresponding Secretary – Mrs. Duane Brunkow, Topeka
Members at Large – Mrs. Carl Coen, Hutchinson and Mrs. Jack Hilgers, Plainville
Pastoral Counselors – Rev. Mark Hoelter, Lawrence, Rev. Arno Meyer, Wichita

1980-1982

President – Mrs. Ken Duitsman, Washington

1st Vice President – Mrs. Richard Traskowsky, Woodbine

2nd Vice President – Mrs. Bill Brown, Dwight

Recording Secretary – Mrs. Larry Bass, Leavenworth

Treasurer – Mrs. Harold Guhn, Tipton

Financial Secretary – Mrs. Robert Wehmeier, Paola

Corresponding Secretary – Mrs. Robert Ohlde, Linn

Members at Large – Mrs. Carl Coen, Hutchinson and Mrs. Jack Hilgers, Plainville

Historian – Mrs. Georgeanna Sohl, Marysville

Pastoral Counselors – Rev. Arno Meyer, Wichita, Rev. Elton Temme, Larned

1982-1984

President – Mrs. Irene (Kenneth) Duitsman, Washington

1st Vice President – Mrs. Lavada (Richard) Traskowsky, Woodbine

2nd Vice President – Mrs. Doris (Carl) Coen, Hutchinson

Recording Secretary – Mrs. Velma (Larry) Bass, Leavenworth

Treasurer – Mrs. Lois (Richard) Marquardt, Hugoton

Financial Secretary – Mrs. Donna (Robert) Wehmeier, Paola

Members at Large – Mrs. Margaret (Robert) Lassman, Chanute and Mrs.

JoAnn (Albert) Nees, Wichita

Historian – Georgeanna Sohl, Marysville

Pastoral Counselors – Rev. Elton Temme, Larned, Rev. Larry Kalsow, Emporia

1984-1986

President – Mrs. LaVada (Richard) Traskowsky, Woodbine

1st Vice President – Mrs. Jane (Harold) Turner, Olathe

2nd Vice President – Mrs. Doris (Carl) Coen, Hutchinson

Recording Secretary – Mrs. Donna (Robert) Wehmeier, Paola

Financial Secretary – Mrs. Velma (Larry) Bass, Leavenworth

Treasurer – Mrs. Adeline Eickhoff, Natoma

Historian – Mrs. Mildred (Ray) Behrens, Lincoln

Members at Large – Mrs. Margaret (Robert) Lassman, Chanute and Mrs.

JoAnn (Albert) Nees, Wichita

Pastoral Counselors – Rev. Larry Kalsow, Emporia, Rev. David Hutson, Kensington

1986-1988

President – Mrs. LaVada (Richard) Traskowsky, Woodbine

1st Vice President – Mrs. Jane (Harold) Turner, Olathe

2nd Vice President – Mrs. Karen (Rod) Herrs, Clay Center

Recording Secretary – Mrs. Donna (Robert) Wehmeier, Paola

Treasurer – Mrs. JoAnn (Fred) Meyer, Alma

Financial Secretary – Mrs. Velma (Larry) Bass, Leavenworth

Historian – Mrs. Mildred (Ray) Behrens, Lincoln
Members at Large – Mrs. Lois (George) Schicklau, Haven and Mrs. Irene (Chester) Weigert, Marysville
Pastoral Counselors – Rev. Kenneth Eakins, Wichita, Rev. Earl Zimmerman, Ottawa

1988-1990

President – Mrs. Jane (Harold) Turner, Olathe
1st Vice President – Mrs. Donna (Robert) Wehmeier, Paola
2nd Vice President – Mrs. Karen (Rod) Herrs, Clay Center
Recording Secretary – Mrs. Jackie (Don) Keller, Lakin
Treasurer – Mrs. JoAnn (Fred) Meyer, Alma
Financial Secretary – Mrs. Bonne (Robert) VonLehe, Lyons
Historian – Mrs. Mildred (Ray) Behrens, Lincoln
Members at Large – Mrs. Lois (George) Schicklau, Haven and Mrs. Irene (Chester) Weigert, Marysville
Pastoral Counselors - Rev. Earl Zimmerman, Ottawa, Rev. Kenneth Eakins, Wichita

1990-1992

President – Mrs. Jane (Harold) Turner, Olathe
1st Vice President – Mrs. Donna (Robert) Wehmeier, Paola
2nd Vice President – Mrs. Marilyn (Jim) Greathouse, Colby
Recording Secretary – Mrs. Jackie (Don) Keller, Lakin
Treasurer – Mrs. Ila (Elmer) Gleue, LeRoy
Financial Secretary – Mrs. Bonne (Robert) VonLehe, Lyons
Historian – Dorothy Wolters, Awood
Members at Large – Mrs. Esther (Howard) Kalebaugh, Kansas City and Mrs. JoAnn (Fred) Meyer, Alma
Pastoral Counselors – Rev. Sam McPeek, Chanute, Rev. Earl Zimmerman, Ottawa

1992-1994

President – Donna Wehmeier, Paola
1st Vice President – Velma Bass, Leavenworth
2nd Vice President – Marilyn Greathouse, Colby
Recording Secretary – Marilyn Reimer, Hillsboro
Financial Secretary – Marj Stuckert, Kansas City
Treasurer – Barbara Teske, Onaga
Members at Large – Joann Meyer, Alma and Esther Kalebaugh, Kansas City
Archivist-Historian – Ardith Bohnenkemper, Holton
Pastoral Counselors – Rev. Sam McPeek (1992) Chanute, Rev. Tom Harmon, Sabetha, Rev. Ron Flentgen (1993) Olathe

1994-1996

President – Donna Wehmeier, Paola
Vice Pres. Mission Service – Velma Bass, Leavenworth

Vice Pres. Mission Education – Sheri Weber, Herington
Vice Pres. Mission Inspiration – Amy Hoffman, Nortonville
Vice Pres. Mission Projects – Marlene Lorenz, Cheney
Recording Secretary – Marilyn Reimer, Hillsboro
Financial Secretary – Marj Stuckert, Kansas City
Treasurer – Mary Bulk, Humboldt
Archivist-Historian – Ardith Bohnenkemper, Holton
Pastoral Counselors – Rev. Tom Harmon, Wichita, Rev. Paul Kaldahl, Oberlin

1996-1998

President – Velma Bass, Leavenworth
Vice Pres. Mission Service – Marj Stuckert, Kansas City
Vice Pres. Mission Education – Shari Weber, Herington
Vice Pres. Mission Inspiration – Amy Hoffman, Nortonville
Vice Pres. Mission Projects – Marlene Lorenz, Cheney
Recording Secretary – Mary Schmidt, Mt. Hope
Corresponding Secretary – Jean Wellner, Wichita
Financial Secretary – Betty Kruse, Colby
Treasurer – Mary Bulk, Humboldt
Pastoral Counselors – Rev. Paul Kaldahl, Oberlin, Rev. David Hutson, Kensington

1998-2000

President – Velma Bass, Leavenworth
Vice Pres. Mission Service – Marj Stuckert, Kansas City
Vice Pres. Mission Education – Marlene Lorenz, Cheney
Vice Pres. Mission Inspiration – Lavonne Kmiec, Girard
Vice Pres. Mission Projects – Jennifer Wolff, Wellington
Recording Secretary – Mary Schmidt, Mt. Hope
Corresponding Secretary – Jean Wellner, Wichita
Financial Secretary – Betty Kruse, Colby
Treasurer – Barb Teske, Onaga
Pastoral Counselors – Rev. David Hutson, Kensington, Rev. Gary Wolf, Lincoln

2000-2002

President – Lois Llewellyn, Lawrence
Vice Pres. Mission Service – Judy Carlson, Paola
Vice Pres. Mission Education – Marlene Lorenz, Cheney
Vice Pres. Mission Inspiration – Lavonne Kmiec, Girard
Vice Pres. Mission Projects – Jennifer Wolff, Wellington
Recording Secretary – Karen Waterman, Oberlin
Corresponding Secretary – Jean Wellner, Wichita
Financial Secretary – Janice Russell, Norton
Treasurer – Barb Teske, Onaga
Pastoral Counselors – Rev. Gary Wolf, Lincoln, Rev. Alan Stahleker, Lincolnville

2002-2004

President – Lois Llewellyn, Lawrence

Vice Pres. Caring Service – Judy Carlson, Paola

Vice Pres. Member Resources – Joann Meyer, Alma

Vice Pres. Christian Life – Bonnie White, Atwood

Vice Pres. Mission Outreach – Mary Lange, Lyons

Recording Secretary – Karen Eskew, Oberlin

Financial Secretary – Janice Russell, Norton

Treasurer – Jean Kaiser, Paola

Pastoral Counselors – Rev. Gary Wolf, Lincoln, Rev. Tom Krause, Overland Park

2004-2006

President – Judy Carlson, Paola

Vice Pres. Caring Service – Betty Kruse, Colby

Vice Pres. Member Resources – Joann Meyer, Alma

Vice Pres. Christian Life – Bonnie White, Atwood

Vice Pres. Mission Outreach – Mary Lange, Lyons

Vice Pres. Communications – Jean Wellner, Wichita

Recording Secretary – Laura Hunter, Kansas City

Financial Secretary – Marcia Blumberg, Andover

Treasurer – Jean Kaiser, Paola

Pastoral Counselors – Rev. Tom Krause, Overland Park, Rev. David Schemm, Topeka

2006-2008

President – Judy Carlson, Paola

Vice Pres. Caring Service – Betty Kruse, Colby

Vice Pres. Member Resources – Tammy Songer, Lenexa

Vice Pres. Christian Life – Karen Eskew, Oberlin

Vice Pres. Mission Outreach – Nina Borgstadter, Ellsworth

Vice Pres. Communications – Jean Wellner, Wichita

Recording Secretary – Laura Hunter, Kansas City

Financial Secretary – Marcia Blumberg, Andover

Treasurer – Becky Schotte, Winfield

Pastoral Counselors – Rev. David Hutson, Kensington, Rev. Rick Rostek, Norton

2008-2010

President – Betty Kruse, Colby

Vice Pres. Caring Service – Jean Wellner, Wichita

Vice Pres. Member Resources – Tammy Songer, Lenexa

Vice Pres. Christian Life – Karen Eskew, Oberlin

Vice Pres. Mission Outreach – Nina Borgstadter, Ellsworth

Vice Pres. Communications – Karen Morrison, Wichita

Recording Secretary – Brenda Piester, Coats

Financial Secretary – Kim Burdett, Olathe

Treasurer – Becky Schotte, Winfield

Pastoral Counselors – Rev. Rick Rostek, Norton, Rev. Dale Becker, Offerle

2010-2012

President – Betty Kruse, Colby
Vice Pres. Caring Service – Jean Wellner, Wichita
Vice Pres. Member Resources – Becky Schotte, Winfield
Vice Pres. Christian Life – Debbie Lehman, Girard
Vice Pres. Mission Outreach – Eden Keefe, Olathe
Vice Pres. Communications – Karen Morrison, Wichita
Recording Secretary – Brenda Piester, Coats
Financial Secretary – Kim Burdett, Olathe
Treasurer – Marj Aufdemberge, Lincoln
Pastoral Counselors – Rev. Dale Becker, Offerle, Rev. Gaylen Burow, Kansas City

2012-2014

President – Karen Morrison, Wichita
Vice Pres. Caring Service – Gloria Raab, Andover
Vice Pres. Special Focus Ministries – Becky Schotte, Winfield
Vice Pres. Christian Life – Debbie Lehman, Girard
Vice Pres. Gospel Outreach – Kim Burdett, Olathe *(filling the unexpired term of Eden Keefe)*
Vice Pres. Communications – Brenda Piester, Coats
Recording Secretary – LaJean Rinker, Topeka
Financial Secretary – Kerri Lynne Brown, Aliceville
Treasurer – Marj Aufdemberge, Lincoln
Pastoral Counselors – Rev. Gaylen Burow, Kansas City, Rev. Jeff Duncan, Wichita

2014-2016

President – Karen Morrison, Wichita
Vice Pres. Caring Service – Gloria Raab, Andover
Vice Pres. Christian Life – Elaine Engelman, Benedict
Vice Pres. Communication/Parliamentarian – Brenda Piester, Coats
Vice Pres. Gospel Outreach – Bernie Reetz, Garden City
Vice Pres. Special Focus Ministries – Sherri Rose, Linwood
Recording Secretary – LaJean Rinker, Topeka
Financial Secretary – Kerri Lynn Brown, Aliceville
Treasurer – Kim Burdett, Olathe
Meeting Manager – Debbie Lehman, Girard
Pastoral Counselors – Rev. Jeff Duncan, Wichita, Rev. Jay Hobson, Hepler

2016-2018

President – Brenda Piester, Coats
Vice Pres. Caring Service – Laura Hunter, Overland Park
Vice Pres. Christian Life – Elaine Engelman, Benedict
Vice Pres. Communication – Shelly Keller, Sylvan Grove
Vice Pres. Gospel Outreach – Bernie Reetz, Garden City
Vice Pres. Organizational Resources/Parliamentarian – Gloria Raab, Andover

Vice Pres. Special Focus Ministries – Sherri Rose, Linwood
Recording Secretary – Kathryn Richard, Arma
Financial Secretary – Ella Schempp, Shawnee
Treasurer – Kim Burdett, Olathe
Meeting Manager – Sherry Meier, Maple Hill
Pastoral Counselors – Rev. Jay Hobson, Hepler, Rev. Robert Grimm, Alma

KANSAS DISTRICT ZONES & SOCIETIES:

Zone	City	Congregation	LWML Certificate
Herington	Lincolnvill	St. John	5/6/1943
Herington	Newton	Zion	6/13/1943 (Inactive 2015)
Herington	Herington	Our Redeemer	11/16/1944
Herington	Latimer	Zion	4/12/1945
Herington	Strong City	Grace	5/13/1945
Herington	Marion	Our Savior	5/6/1947
Herington	Ramona	Trinity	7/17/1952 (inactive 2011)
Herington	Abilene	Faith	9/11/1952
Herington	Council Grove	Calvary	2/18/1954
Herington	Herington	St. John	12/13/1956
Herington	Tampa	St. John	4/26/1957
Herington	Herington	Immanuel	5/1/1957
Herington	Hillsboro	Zion	6/8/1962
Hutchinson	Cheney	St. Paul	4/1/1943
Hutchinson	Ellinwood	St. John	4/1/1943
Hutchinson	Hutchinson	Our Redeemer	4/1/1943
Hutchinson	Preston	St. Paul	
		-Ladies Aid	4/1/1943
Hutchinson	Haven	St. Paul	5/12/1943
Hutchinson	Nashville	St. John-Dorcas	12/3/1943
Hutchinson	Canton	Immanuel	1/20/1944
Hutchinson	Moundridge	St. John	11/1/1946
Hutchinson	Salina	Trinity	3/18/1954
Hutchinson	McPherson	Grace	8/5/1958
Hutchinson	Medicine Lodge	Trinity	4/28/1962
		-Women of Trinity	
Hutchinson	Preston	St. Paul	10/29/1962
		-Bethany Guild	
Hutchinson	Salina	Christ the King	4/27/1963
Hutchinson	Lyons	Grace	7/26/1963
KC CrossRoads	Kansas City	Grace	
		-Service Guild	7/1/1942
KC CrossRoads	Paola	First	1/6/1943
KC CrossRoads	Leavenworth	St. Paul	
		-Ladies Aid	3/3/1943
KC CrossRoads	Kansas City	Our Savior	3/4/1943
KC CrossRoads	Kansas City	St. Luke	
		-Ladies Aid	3/4/1943

Zone	City	Congregation	LWML Certificate
KC CrossRoads	Mission	Trinity	7/1/1943
KC CrossRoads	Shawnee	Hope	9/29/1954
KC CrossRoads	Kansas City	Faith	10/3/1954
			<i>(disbanded 1983)</i>
KC CrossRoads	Kansas City	Bethel	4/11/1956
			<i>(inactive)</i>
KC CrossRoads	Leavenworth	Trinity	4/11/1956
KC CrossRoads	Overland Park & Stilwell	Bethany	11/10/1960
KC CrossRoads	Olathe	Redeemer	10/17/1962
KC Crossroads	Kansas City	Immanuel	3/17/1964
			<i>(disbanded 1986)</i>
KC CrossRoads	Paola	Trinity	10/6/1966
			<i>(disbanded 1998)</i>
KC CrossRoads	Basehor	Risen Savior (Emmaus)	
	(Bonner Springs)		7/15/1970
KC CrossRoads	Overland Park	Christ	7/14/1981
			<i>(inactive 1992)</i>
KC CrossRoads	Gardner	King of Kings	7/1/1986
KC CrossRoads	Olathe	Beautiful Savior	3/15/1994
KC CrossRoads	Kansas City Metro	Eve Circle	4/16/2016
	<i>(multi-congregation)</i>		
KC CrossRoads	Leawood	Lord of Life	
KC CrossRoads	Louisburg	Christ Our Savior	
Lincoln	Holyrood/Claflin	St. Peter	
		-Ladies Aid	6/2/1943
Lincoln	Sylvan Grove	Bethlehem	11/3/1946
Lincoln	Ellsworth	Immanuel	4/13/1950
Lincoln	Hunter	Trinity	
		-Ladies Aid/LWML3	12/1952
Lincoln	Larned	Grace	10/13/1952
Lincoln	Hoisington	Concordia	1/6/1956
Lincoln	Lincoln	St. John	10/11/1956
Lincoln	Plainville	First	2/17/1960
Lincoln	Downs	Zion	6/14/1961
			<i>(inactive 2002)</i>
Lincoln	Lincoln	St. Paul	7/1/1962
			<i>(inactive 2008)</i>
Lincoln	Natoma	Peace-Guild	3/5/1963
Lincoln	Great Bend	Our Savior	10/17/1977
			<i>(inactive 1999)</i>
Lincoln	Ellsworth	St. Paul	10/14/2004
Linn	Marysville	Mt. Calvary	10/1/1947
			<i>(inactive)</i>
Linn	Bremen	Bethlehem	10/20/1949
Linn	Palmer	St. John	8/10/1950
Linn	Linn	Zion	12/3/1950
Linn	Greenleaf	Bethlehem	1/21/1951
		-LWML/Ladies Aid	
Linn	Barnes	St. Peter	7/24/1952
			<i>(disbanded)</i>

Zone	City	Congregation	LWML Certificate
Linn	Bremen	Immanuel	5/7/1954
Linn	Hanover	Trinity	8/8/1960
Linn	Linn	Immanuel	5/3/1961
Linn	Clay Center	St. Paul	3/27/1962
Manhattan	McFarland	Trinity	12/3/1942
Manhattan	Alta Vista	St. Paul	7/8/1943
Manhattan	Duluth	St. Paul	10/23/1943
Manhattan	Wheaton	St. Luke	5/26/1945
		-LWML/Ladies Aid	
Manhattan	Manhattan	St. Luke	10/9/1949
Manhattan	Junction City (Clark's Creek)	St. Paul	5/1/1951 (disbanded)
Manhattan	Wamego	Mt. Calvary	4/16/1952
Manhattan	Junction City	Immanuel	1/13/1953 (inactive 2013)
Manhattan	Alma	St. John	1/25/1953
Manhattan	Manhattan	Christ	2/28/1999 (disbanded 2007)
Northeast	Hiawatha	Zion	6/1/1942
Northeast	Nortonville	St. Matthew	7/2/1942
Northeast	Atchison	Trinity	8/27/1942
Northeast	Fairview	St. Paul	3/3/1943
Northeast	Holton	Trinity	3/11/1943 (inactive)
Northeast	Wathena	Christ	3/11/1943
Northeast	Easton	St. John	1/1/1944
Northeast	Netawaka	Immanuel	
		-Ladies Aid	2/3/1944
Northeast	Sabetha	First	1/7/1955
Northeast	Fairview	Immanuel	
Northeast	Powhattan	Zion	
Northwest	Colby	Trinity	4/1/1943
Northwest	Oberlin	St. John	
		-Guild/LWML	4/18/1943
Northwest	Phillipsburg	First-Guild	12/10/1946
Northwest	Oakley	Immanuel	2/24/1950
Northwest	Kensington	First	
		-St. John Guild	10/10/1950
Northwest	Norton	Immanuel	3/7/1953
Northwest	Hays	Messiah	2/4/1954
Northwest	Atwood	Redeemer	9/12/1957
Northwest	Hill City	Grace	10/10/1962
Northwest	Hoxie	Immanuel	2/7/1965
Southeast	Coffeyville	St. Paul	5/6/1943
Southeast	Parsons	Trinity	5/7/1943
Southeast	Humboldt	St. Peter	
		-LWML Guild	6/16/1943
Southeast	Pittsburg	Zion	7/25/1943

Zone	City	Congregation	LWML Certificate
Southeast	Independence	Zion	6/5/1944
Southeast	Hepler	Immanuel	
		-Hepler WinGS	7/2/1944
Southeast	Girard	Trinity LWML	5/26/1948
Southeast	Chanute	Zion	6/24/1949
Southeast	Oswego	St. Paul	10/18/1949
		(inactive 1992)	
Southeast	Fort Scott	Trinity LWML	3/3/1952
		(disbanded 2004)	
		Ladies Guild	3/7/2018
Southeast	Caney	Trinity	1/25/1965
		(inactive 1992)	
Southeast	Girard	Trinity	9/20/1966
		-Mary Martha	
Southeast	Erie	Good Shepherd	10/7/1981
Southeast	Iola	Grace	9/9/1986
Southwest	Dodge City	Holy Cross	
		-Ruth Guild	4/8/1943
Southwest	Scott City	Holy Cross	9/9/1943
		(inactive)	
Southwest	Meade	St. John	10/3/1943
Southwest	Garden City	Trinity	10/16/1943
Southwest	Offerle	Zion-Ladies Aid	1/1/1944
Southwest	Liberal	Grace Lutheran	2/1/1945
Southwest	Lakin	Immanuel	4/12/1945
Southwest	Kinsley	Our Redeemer	6/16/1950
		-Mary Martha Guild	
Southwest	Bazine	St. Luke	10/4/1953
		(inactive)	
Southwest	Greensburg	Peace	1/27/1956
		(inactive)	
Southwest	Dighton	Christ the King	2/16/1961
		(inactive)	
Southwest	Elkhart	Christ	11/9/1961
		(inactive)	
Southwest	Ulysses	Grace	3/23/1965
		(inactive 2012)	
Southwest	Hugoton	Faith	1/27/1966
		(disbanded 1990s)	
Topeka	Lawrence	Immanuel	12/2/1942
Topeka	Emporia	Messiah	3/29/1943
Topeka	Topeka	St. John	4/12/1943
Topeka	Aliceville	St. John	5/13/1943
Topeka	Ottawa	Faith	11/1/1944
Topeka	Topeka	Faith	8/6/1948
Topeka	Topeka	Hope	11/4/1948
Topeka	Topeka	Christ	3/20/1962
Topeka	Burlington	Trinity	12/3/1964
Topeka	Garnett	Trinity	12/2/1981

Zone	City	Congregation	LWML Certificate
Topeka	Emporia	Faith	2/6/1984
Topeka	Lawrence	Redeemer	8/1/1986
Topeka	Topeka	Prince of Peace	12/29/1988
Topeka	Vassar	Zion	11/20/1994
Wichita	El Dorado	Grace	1/14/1943
Wichita	Wichita	Holy Cross	2/3/1943
Wichita	Wichita	Immanuel	3/28/1943
Wichita	Winfield	Trinity	4/8/1943
Wichita	Wichita	Trinity	
		-Ladies Guild	11/12/1944
Wichita	Arkansas City	Redeemer	1/24/1947
Wichita	Augusta	Christ	7/14/1948
Wichita	Argonia	Zion	2/19/1953
Wichita	Wichita	Grace	5/18/1953
Wichita	Wellington	Calvary-Dorcas	12/18/1956
Wichita	Wichita	Bethany	7/18/1957
Wichita	Derby	Faith	8/18/1957
Wichita	Wichita	Ascension	5/4/1960
Wichita	Wichita	St. Andrew	5/19/1971
Wichita	Andover	Peace	2/11/1985
Wichita	Wichita	Risen Savior	12/15/1995
Wichita	Pratt	WinGS	4/16/2016
		(Women in God's Service)	

LUTHERAN WOMEN'S MISSIONARY LEAGUE KANSAS DISTRICT 1943-2018 MISSION GRANTS

From the very beginning of the Lutheran Women's organization, both at the national level and in the Kansas, the purpose has ALWAYS been focused on MISSIONS. Women have joyfully given of their time and talents—and their mites—to provide financial grants to churches, students going into church work as a career, social needs within their communities, and support of missions and missionaries—both at home and abroad.

"It is interesting to note that from its very beginning the objectives of the LWML have been Missionary Education—Missionary Inspiration—Missionary Service. ... During these 25 years, the LWML has increased its numbers, has expanded its program, has used its resources in Mission projects, and has involved willing women in joyful service for the Lord. All glory to God."

-From "Yesterday, Today, and Forever—25 Years of God's Blessings," 1968

The following list reflects what has been given within and from the Kansas District from the humble beginnings of the Lutheran Women's Missionary League.

YEARS	RECIPIENT	LOCATION	GRANT PURPOSE	AMOUNT
1943		Winfield	Expenses of Missionaries to District Conference	\$ 100
1944	Pilgrim Chapel for the Deaf	Kansas City, MO	Pews	\$ 260
1944	Immanuel Lutheran	Lawrence	Pipe Organ Fund	\$ 900
1945	Messiah Lutheran	Emporia	Church Furnishings	\$ 900
1945	Grace Lutheran	Liberal	Church Furnishings	\$ 900
1945	Grace Lutheran	McPherson	Church Furnishings	\$ 900
1946	Faith Lutheran	Ottawa	Church Furnishings	\$ 500
1946	Grace Lutheran	Lyons	Church Furnishings	\$ 500
1946	First Lutheran	Phillipsburg	Church Furnishings	\$ 500
1947	Our Redeemer Lutheran School	Hutchinson	School Furnishings	\$ 900
1946-1949	Heidelberg Orphanage	Germany	Orphanage expenses (food, etc.) post War II years	\$ 6,360
1948	European Relief	Europe	WW II Relief Fund	\$ 250
1948	Zion Lutheran	Chanute	Church Furnishings	\$ 900
1949	Redeemer Lutheran	Russell	Organ Fund	\$ 900
1949	Hope Lutheran	Topeka	Church Furnishings	\$ 900
1949	Faith Lutheran	Topeka	Church Furnishings	\$ 900
1950	Our Redeemer Lutheran	Kinsley	Organ Fund	\$ 900
1950	Missionaries stationed in Hokkaido	Tokyo, Japan	Jeeps for Jesus	\$ 1,200
1951	St. John's College	Winfield	Rooms in new girls' dormitory	\$ 800
1951	Christ Lutheran	Augusta	Church Furnishings	\$ 900
1952	Trinity Lutheran	Fort Scott	Pews	\$ 900
1952	Trinity Lutheran	Parsons	Organ Fund	\$ 500
1952	Grace Lutheran	Strong City	Flood Relief	\$ 500
1952	St. Luke's Lutheran	Manhattan	Student Center Aid	\$ 900
1952	Our Redeemer Lutheran	Wichita	Organ Fund	\$ 500

1952	Immanuel Lutheran	Norton	Church Furnishings	\$ 900
1952	Immanuel Lutheran	Oakley	Church Furnishings	\$ 900
1952	Grace Lutheran	Larned	Organ Fund	\$ 500
1953	Zion Lutheran	Kansas City, KS	Church Furnishings	\$ 900
1953	Trinity Lutheran	Burlington	Pews	\$ 900
1954	Messiah Lutheran	Hays	Church Pews	\$ 900
1954	Mount Calvary Lutheran	Wamego	Pews	\$ 900
1955	Faith Lutheran	Abilene	Pews	\$ 900
1955	First Lutheran	Sabetha	Church Furnishings	\$ 900
1955	Faith Lutheran	Ottawa	Relocate out of flood area	\$ 400
1955	Trinity Lutheran	Girard	Pews	\$ 900
1956	Grace Lutheran	Iola	Pews	\$ 900
1956	Calvary Lutheran	Wellington	Altar, pulpit or church pews	\$ 900
1956	Zion Lutheran	Wichita	Organ Fund	\$ 900
1956	Faith Lutheran	Kansas City	Furnishings, pews, etc.	\$ 900
1956	Hope Lutheran	Shawnee	Partial payment on organ	\$ 900
1957	Peace Lutheran	Greensburg	Help on organ, pews, etc.	\$ 900
1957	Grace Lutheran	Atwood	Pews	\$ 900
1957	Bethel Lutheran	Bethel	Church furnishings	\$ 900
1957	Grace Lutheran	Wichita	Organ, Pews	\$ 900
1957	Grace Lutheran	Liberal	Building Fund	\$ 1,000
1958	Trinity Lutheran	Leavenworth	Pews, General Expenses	\$ 900
1958	Faith Lutheran	Derby	Chancel furnishings	\$ 1,000
1956-1958			Outside of District	\$ 440
1959	LCMS Foreign Missions	Selma, Alabama	Furnish room in girls' dormitory	\$ 800
1960	Lutheran Social Services	Wichita	Social Worker Training	\$ 800
1961	Christ the King	Dighton	Room Dividers	\$ 1,000
1961	Bethany Lutheran	Wichita	Educational building fund	\$ 1,000

YEARS	RECIPIENT	LOCATION	GRANT PURPOSE	AMOUNT
1961	Bethel Lutheran	Columbus	Building Fund	\$ 1,000
1961	Grace Lutheran	Ulysses	Church Furnishings	\$ 1,000
1962	Ascension Lutheran	Wichita	Chancel carpeting and Sunday School chairs	\$ 1,000
1962	Bethany	Overland Park	Pews	\$ 1,000
1960-1962	Medical Missions		Medical work	\$ 496.61
1960-1962	Lutheran World Relief	Baltimore, MD	World Relief	\$ 690.08
1963	Christ Lutheran	Elkhart	Building Fund	\$ 1,000
1963	Redeemer Lutheran	Olathe	Organ Fund	\$ 1,000
1964	Christ Lutheran	Topeka	Mission Church expenses	\$ 1,000
1965	Christ the King Lutheran	Salina	Organ Fund	\$ 1,000
1965	Grace Lutheran	Hill City	Mission Church expenses	\$ 1,000
1966	Kansas University Lutheran Church and Student Center	Lawrence		\$ 1,000
1966-1968	Christ Lutheran	Hutchinson	Mission Church expenses	\$ 1,000
1966-1968	Faith Lutheran	Hugoton	Mission Church expenses	\$ 1,000
1966-1968	Faith Lutheran	Kansas City	Mission Church expenses	\$ 1,000
1966-1968	Faith Lutheran	Goodland	Mission Church expenses	\$ 1,000
1969	Trinity Lutheran	Medicine Lodge	Mission Church expenses	\$ 1,000
1970	Emmanuel Lutheran	Bonner Springs	Mission Church expenses	\$ 1,000
1970	Calvary Lutheran	Topeka	Mission Church expenses	\$ 1,000
1970		Selma, AL		\$ 1,000
1970	Concordia Seminary	Springfield, IL	Minority Group Scholarship	\$ 500
1970	Kristen Press	New Guinea	Purchase Christian Literature	\$ 1,000
1971	Concordia School	Valparaiso, Chili		\$ 1,000
1971	Emporia State University	Emporia	Lutheran Student Center	\$ 500
1972	Faith Lutheran	Kansas City		\$ 500

1972	Fort Hays State University	Hays	Lutheran Student Center	\$ 500
1972	Lutheran Bible Translators, Inc.			\$ 500
1972	Children's Christian Concern Society	Zacapa, Guatemala	Site of property, chapel and parsonage	
1973	Medical Mission	Nigeria	Scholarship Fund	\$ 1,000
1973	St. Timothy's Lutheran Church	Sunderland, England		\$ 1,000
1973	University	River Forest, IL	Aid for foreign church workers	\$ 500
1973	Lit-Lit Fund	India	Tracts and Booklets	\$ 1,000
1973	Concerned Christians of Salina, Kansas	Salina, Kansas		\$ 550
1973	St. John's College	Winfield, KS	Sewing machines	\$ 450
1973	Faith Lutheran	Abilene	Equipment for Christian Education Program	\$ 450
1973	St. John's College	Winfield	Nursing Program	\$ 3,000
1974	Concordia College	Seward, NE	Intl. Student Scholarships	\$ 1,000
1974-1976	Bethesda Lutheran Home	Watertown, WI		\$ 1,800
1974-1976	Lutheran Braille Workers, Inc.	Kansas	Sight-Saving Divisions	\$ 1,000
1974-1976	"This is the Life"		Spanish version	\$ 3,500
1974-1976	Lutheran Indians Gathering Helping Together (LIGHT)	Philippines	3 ped-o-jet injectors	\$ 2,750
1974-1976	House of Worship for Navajo	New Mexico	Lawrence	\$ 1,000
1974-1976	Reno County Alcoholic Facility, Inc.	Reno County		\$ 2,000
1974-1976	New Guinea Bible Translators			\$ 1,000
1974-1976	Winfield State Hospital		Lutheran Deaconess Training	\$ 700
1976-1978	St. John's College	Winfield, KS	Nursing Program	\$ 2,000
1976-1978	Children's Christian Concern Society	Zacapa, Guatemala	Boarding School	\$ 2,000
1976-1978		Papua, New Guinea	Radio Replacements	\$ 2,875
1976-1978	Ambur Girls' Boarding Home	Ambur, India		\$ 1,820
1976-1978	Kansas District Ministry to the Deaf			\$ 2,000

YEARS	RECIPIENT	LOCATION	GRANT PURPOSE	AMOUNT
1976-1978		Brazil	Special Teacher Scholarships	\$ 3,000
1976-1978	Winfield State Training School	Winfield, KS	Deaconess/Parish Worker	\$ 1,000
1976-1978	India Hill Evangelism			\$ 1,305
1978-1980	Bethesda Lutheran Home	Watertown, WI		\$ 2,000
1978-1980	St. John's College	Winfield	Chair of Nursing	\$ 2,500
1978-1980		Papua, New Guinea	Support for Lutheran Nurse	\$ 1,060
1978-1980		Papua, New Guinea	Housing for nurses	\$ 1,440
1980-1982	Lutheran Mission of the Good Shepherd	Kansas City, MO	Associate Director	
			<i>(Full time funding for 6 months)</i>	\$ 4,000
1980-1982	Lutheran Mission of the Good Shepherd	Kansas City, MO	Van	\$ 5,000
1980-1982	Haskell LIGHT, Inc.	Lawrence	Staff Salary	\$ 3,500
1980-1982	Nagercoil District Synod	South India	Rural Health Program	\$ 2,500
1982-1984	Haskell LIGHT, Inc.	Lawrence		\$ 4,000
1982-1984	Krahn Literacy Work	Liberia, West Africa	Literacy	\$ 5,000
1982-1984	Commission on Services to the Mentally Retarded		Scholarship Fund	\$ 2,000
1982-1984		Ogoja Province, Nigeria	Village Health Work	\$ 2,500
1982-1984	Refugee Resettlement Fund			\$ 5,000
1982-1984	Kansas District LCMS, Project Prepare	Topeka	Training program for district pastors for counseling for couples for marriage	\$ 1,500
1984-1986	Hispanic Ministry	Garden City		\$ 5,000
1984-1986	Good Shepherd Mission	Kansas City, MO	66 passenger bus	\$ 5,000
1984-1986	John & Kathy Duitsman	Liberia	Mission work in Liberia	\$ 5,000
1984-1986	Missionary	Nigeria	Vehicle for Missionary	\$ 3,300
1986-1988	Haskell LIGHT, Inc.	Lawrence		\$ 5,000
1986-1988	Kansas District LCMS	Topeka	Modular Worship Unit	\$ 3,125

1986-1988	Ministry to Northern Cheyenne Indians	Muddy Cluster, MT	
1986-1988	St. Luke's Lutheran	Kansas City	Facility Repairs \$ 3,500
1986-1988	Kansas District LCMS	Topeka	Prison Ministry \$ 5,000
1986-1988	Kansas District LCMS, King of Kings	Gardner	New church development \$ 3,000
1986-1988	Concordia Seminary	Hong Kong	Scholarships \$ 5,000
1988-1990	Kansas District LCMS	Olathe	New church in east Olathe \$ 375
1988-1990	Lutheran Church	Liberia, Africa	Motorbike \$ 5,000
1988-1990	LCMS	Togo, Africa	Transceiver radios \$ 2,500
1988-1990	St. Timothy Seminary	St. Louis	Library for the blind \$ 3,000
1988-1990		Philippines	Textbooks for Seminary Students \$ 2,500
1990-1992	Hope Lutheran	Southwest U.S.	Hispanic Ministry \$ 5,000
1990-1992		Salt Lake City, UT	Mission congregation \$ 3,000
1990-1992		India	Help a Hospital \$ 4,700
1990-1992		Liberia, Africa	Missionary wells \$ 2,000
1990-1992		Kansas	Deaf ministries in Kansas \$ 5,000
1990-1992	Heartwarmers		One seasonal program package \$ 6,000
1990-1992	Lutheran High School	Kansas City, MO	Van \$ 5,000
1990-1992	Children's Christian Concern Society	Zacapa, Guatemala	Equipment for Lutheran School \$ 1,300
1992-1994	Lutheran Braille Workers	Yucaipa, CA	\$ 5,000
1992-1994	Bethesda Lutheran Home	Watertown, WI	Faith Village \$ 1,600
1992-1994			Interpreting services for deaf seminary students \$ 5,000
1992-1994	Trinity First Lutheran Church	Minneapolis, MN	Child evangelism \$ 5,000
1992-1994		Togo, Africa	Chapel roofing materials \$ 5,000
1992-1994	Faith Lutheran Church	Kansas City	\$ 5,000
1992-1994		Wichita	Hispanic Outreach \$ 1,000
1992-1994	Kansas District LCMS	Wichita	New mission in NE Wichita \$ 400
1994-1996	Risen Savior Lutheran	Wichita	\$ 5,000

YEARS	RECIPIENT	LOCATION	GRANT PURPOSE	AMOUNT
1994-1996	LCMS World Missions	St. Louis	Laborers for Christ	\$ 3,000
1994-1996	Camp Tomah-Shinga	Junction City	Cabins for Campers	\$ 5,000
1994-1996	LCMS World Missions	St. Louis	Education for missionary kids	\$ 1,500
1994-1996	LCMS World Missions	Eastern Europe	Lutheran Houses	\$ 3,000
1994-1996	North Light	Northern Canada	Video Ministry	\$ 2,000
1994-1996	Institute Santissima	Trindade, Moreira, Brazil		\$ 5,000
1994-1996	Bethesda Lutheran Home	Watertown, WI	Camp Matz	\$ 2,000
1994-1996	LCMS World Missions	St. Louis	Ministry to the Armed Forces	\$ 1,500
1996-1998				
1998-2000	Ministry to the Armed Forces	St. Louis	Portals of Prayer	\$ 3,500
1998-2000		Russia	Worship facilities	\$ 5,000
1998-2000	Morris and Jean Olson	Russia	Missionary support	\$ 3,500
1998-2000		China	English teachers	\$ 4,000
1998-2000	Lutheran Braille Workers	Yucaipa, CA		\$ 5,000
1998-2000	King of Kings Lutheran			\$ 1,000
1998-2000	Grace Lutheran	Wichita	Food Pantry	\$ 3,000
1998-2000	Evangelical Lutheran Church	Haiti		\$ 5,000
2000-2002		Guinea, West Africa	Chapel roofing project	\$ 2,000
2000-2002	Kansas District LCMS	Topeka	Rural/Small Town Mission	\$ 5,000
2000-2002			4-wheel drive Gospel vehicle	\$ 3,000
2000-2002	Faith Lutheran - Grace Lutheran	Hugoton - Liberal	Hispanic Mission	\$ 2,500
2000-2002	Blind Ministry		Equipment repair	\$ 2,000
2000-2002	Lutheran Braille Workers	Yucaipa, CA		\$ 5,000
2000-2002		Russia	Eastward expansion	\$ 5,000
2000-2002		Guinea West Africa	Women's Leadership Training	\$ 5,000
2000-2002		Janina, Gazda, Poland	Van	\$ 2,500
2002-2004	Concordia Seminary	St. Louis	Seminary Food Bank	\$ 2,000

2002-2004	Bethel Deaf TV Ministries, Inc.	Spring Hill		\$ 3,000
2002-2004	Haskell LIGHT Ministry	Haskell Indian Nations Univ.	Lawrence	\$ 5,000
2002-2004	Our Saviour Lutheran	Kansas City	Midweek Outreach	\$ 3,000
2002-2004		Africa	Training for wives of Lutheran pastors and evangelists	\$ 3,500
2002-2004	Veterans Affairs—LCMS Chaplains	St. Louis	“God’s Words of Encouragement” Resource	\$ 5,000
2002-2004	Christ the King Lutheran (through CCCS)	Maturin, Venezuela	Church and School	\$ 5,000
2002-2004	Lutheran Student Center			
	at Wichita State University	Wichita		\$ 5,000
2002-2004				\$ 500
2004-2006		Guinea, West Africa	Curriculum for Chinese Bibles Motorcycles and Bicycles for Lay Pastors	\$ 5,000
2004-2006	Lutheran Church of the Good Shepherd	Kansas City, MO		\$ 4,800
2004-2006	Guinea Mission Field	Guinea, West Africa	Chapel Roofs	\$ 5,000
2004-2006	St. Paul Lutheran Preschool	Clay Center		\$ 3,000
2004-2006	Riverview Community Services, Inc.	Kansas City, KS		\$ 5,000
2004-2006	Guinea Mission Field	Guinea, West Africa	School Roof	\$ 1,400
2004-2006	Guinea Lutheran National Church Council	Guinea, West Africa		\$ 4,000
2004-2006	Lutheran Bible Translators	Aurora, IL		\$ 5,000
2004-2006		Kazakhstan	Theological Training	\$ 800
2006-2008	Alaska Mission for Christ	Alaska		\$ 4,500
2006-2008	Faith Lutheran School	Derby		\$ 2,900
2006-2008	Teach My Kenyan Children	Kenya, Africa		\$ 4,000
2006-2008	Ascension Lutheran Church	Quetzaltenango, Guatemala		\$ 5,900
2006-2008	LCMS	St. Louis	For the Sake of the Church initiative	\$ 3,000

YEARS	RECIPIENT	LOCATION	GRANT PURPOSE	AMOUNT
2006-2008	University Lutheran Center Assoc.	Wichita		\$ 700
2008-2010	Orphan Grain Train	Phillipsburg		\$ 5,000
2008-2010	Guinea Lutheran Mission	Guinea, West Africa		\$ 5,500
2008-2010	Bethesda Lutheran Home and Services	Watertown, WI		\$ 5,000
2008-2010		China	Christian literature	\$ 4,500
2008-2010	God's Little Saints Preschool	Atwood		\$ 1,000
2008-2010	Team China	Macau, China		\$ 5,000
2008-2010	University Lutheran Center	Wichita		\$ 5,000
2008-2010		Garden City	English as a second language	\$ 4,650
2008-2010	Faith Lutheran School	Derby		\$ 2,970
2008-2010	Redeemer Lutheran	Olathe	Hispanic Ministry	\$ 1,380
2010-2012	Children's Christian Concern Society	Sierra Leone, Africa		\$ 2,500
2010-2012	Orphan Grain Train	Stuttgart	Kansas Division of OGT	\$ 5,000
2010-2012		Africa	Chapel roofs	\$ 5,000
2010-2012	LCMS World Mission Ministry to the Armed Forces, Operation Barnabas	St. Louis		\$ 10,000
2010-2012	Concordia Seminary	Nagercoil, India		\$ 5,000
2010-2012	Linn Lutheran School & Preschool	Linn		\$ 1,500
2010-2012	Peace Lutheran Church	Greensburg		\$ 1,000
2010-2012	Holy Trinity Institute	Moreira, Rio Gran de Sol, Brazil		\$ 3,000
2010-2012	University Lutheran Center	Wichita		\$ 5,000
2010-2012	Lutheran Bible Translators	Aurora, IL		\$ 2,000
2012-2014	Children's Christian Concern Society	Guinea, West Africa	4 School roofs	\$ 6,000
2012-2014	Orphan Grain Train	Stuttgart	Kansas Division of OGT	\$ 5,000
2012-2014	Lutheran Bible Translators	Concordia, MO	Vehicle in West Africa	\$ 5,000
2012-2014	LCMS World Mission	St. Louis	Missionary Family Care and Education	\$ 8,000

2012-2014	LCMS World Mission	Macau, China	Outreach	\$ 4,100
2012-2014		Kyrgyzstan	Puppet/Drama Theaters in orphanages	
2014-2016	Lutheran Student Center	Wichita		\$ 4,400
2014-2016	Concordia Seminary	St. Louis	Food Bank	\$ 5,000
2014-2016	Lutheran Braille Workers	Yucaipa, CA	Kansas Work Centers	\$ 5,000
2014-2016	Lutheran Heritage Foundation	Macomb, MI		\$ 5,000
2014-2016	Family Shield Ministries	St. Louis		\$ 4,000
2014-2016	St. Paul Lutheran Preschool	Fairview		\$ 1,000
2014-2016	Orphan Grain Train	Stuttgart	Kansas Division of OGT	\$ 5,000
2014-2016	Bethany Lutheran	Wichita	Faith Legacy	\$ 1,550
2014-2016	Children's Christian Concern Society / LeadaChild	Bangladesh		
2014-2016	Lutheran Braille Workers	Wichita	Holy Cross Work Center	\$ 6,000
2014-2016	Christ the King Lutheran	Salina	Praise Band	\$ 2,000
2016-2018	Haskell LIGHT Campus Ministry	Lawrence		\$ 450
2016-2018	LCMS Ministry to the Armed Forces/Operation Barnabas	St. Louis		\$ 5,000
2016-2018	Children's Christian Concern Society / LeadaChild	St. Louis		\$ 4,000
2016-2018	Concordia Seminary	Sierra Leone		\$ 5,000
2016-2018	Jesus El Buen Pastor Lutheran	St. Louis, MO	Seminary Food Bank	\$ 5,000
2016-2018	Lutheran Student Center at WSU	Kansas City		\$ 3,000
2016-2018	Concordia Theological Seminary	Wichita		\$ 5,000
2016-2018	Lutheran Valley Retreat	Fort Wayne, IN	Seminary Food Bank	\$ 5,000
2016-2018	Kansas Nebraska Good News Radio	Woodland Park, CO		\$ 5,000
		McCook, NE		\$ 3,000

LEAGUE PLEDGE

IN FERVENT GRATITUDE FOR
THE SAVIOR'S DYING LOVE AND
HIS BLOOD-BOUGHT GIFT OF REDEMPTION,
WE DEDICATE OURSELVES TO HIM WITH ALL
THAT WE ARE AND HAVE; AND IN OBEDIENCE
TO HIS CALL FOR WORKERS
IN THE HARVEST FIELDS, WE PLEDGE HIM
OUR WILLING SERVICE WHEREVER AND
WHENEVER HE HAS NEED OF US.
WE CONSECRATE TO OUR SAVIOR
OUR HANDS TO WORK FOR HIM,
OUR FEET TO GO ON HIS ERRANDS,
OUR VOICE TO SING HIS PRAISES,
OUR LIPS TO PROCLAIM HIS REDEEMING LOVE,
OUR SILVER AND OUR GOLD
TO EXTEND HIS KINGDOM,
OUR WILL TO DO HIS WILL,
AND EVERY POWER OF OUR LIFE
TO THE GREAT TASK OF BRINGING
THE LOST AND THE ERRING INTO ETERNAL
FELLOWSHIP WITH HIM. AMEN."

LUTHERAN WOMEN'S MISSIONARY LEAGUE KANSAS DISTRICT

1948-2018 SCHOLARSHIPS, SPECIAL GIFTS, AND STUDENT FINANCIAL AID

LWML in the Kansas District recognized that they could be instrumental in supporting students attending college and planning to major in church work as a career. In the beginning, the scholarships were based on merit and need, while others received smaller special gifts. In 1986, the Student Financial Aid Fund was established by a special gift in memory of Mathilda Chappel. Contributions toward Student Financial Aid come mostly from mites, but they also come from love offerings, memorials, estates, and other designated gifts to the SFA fund. In more recent years, the student financial aid was distributed equally to students based on their year in college and their program of study. In addition, many societies support individual church worker students.

YEAR	RECIPIENT	PROGRAM OF STUDY	AMOUNT
1948	Joan Stengel	Deaconess	\$ 500
1951-1954	Joan Stengel	Deaconess: Valparaiso University	\$ 500
1957	Nina Kohls	Deaconess	\$ 600
1956-1958	William Earnest Kuehn	Teacher	\$ 1,000
1958	Clarence Aufdenberge	Teacher	\$ 600
1958	Margaret Heine, Delores Seyfert	Deaconess	\$ 1,200
1958	Robert Jackson	Ministerial	\$ 1,000
1958	Irma Biederman	Teacher	\$ 600
1959	Robert Heil, W. Wayne Meier, L.J. Rongstad	Ministerial	\$ 3,000
1961	James Clark, Paul Helmer, Ronald Kresge	Ministerial	\$ 4,500
1961	Janice Bracher, Tom Mueller, Marvin Oestman, Leona Schaefer, Gary Schmiedemann, Jolene Schultz, Carroll Dean Von Stroh	Teacher	\$ 5,500
1962	Eldor Meyer, William Voelker	Ministerial	\$ 3,000
1962	Carolee Ann Ults	Deaconess	\$ 900
1963	Austin Coleman	Ministerial	\$ 1,500
1963	Sarah Jane Nelson	Deaconess	\$ 900
1963	Eunice Honig, Kathy Jacob, Ruth Kohlmeier	Teacher	\$ 2,700
1964	Carol Marten, Marcus Terrass, Mike Tonn, Barbara Tucker, Martha Taylor, Marcia Woerman	Teacher	\$ 5,400
1965	James Bach, Thomas Hoelter, Vernon Kettner, Kenneth Sinclair	Ministerial	\$ 3,100
1965	Carol Fitz, Patricia Jantz, Sybil Kramer, Gloria Upham	Teacher	\$ 3,200
1966	Tom Mendehall, Keith Weins	Ministerial	\$ 2,750
1966	Deana Ochs, Sharon Laue	Deaconess	\$ 1,800
1966	Nancy Doesken, Kathy Lassman, Ruth Merz, Lucille Niermeier	Teacher	\$ 2,950
1967	Dennis Fakes	Ministerial	\$ 1,300
	Janelle Berndt	Deaconess	\$ 900
	Jane Bernhardt, Dorothy Kruse, Alice Henson, Mary Randolph, Jean Anne Tonn	Teacher	\$ 3,000
1968	Richard Bruenger, Mark Kastens	Ministerial	\$ 1,600
1968	Carol Bohenenkemper, Glenna Haemmerle, Larry Luedders, Neal Koch, Pamela Ochs, Kathy Vogts, Arleen Tonn	Teacher	\$ 4,100
1969	John Duran, Allen Schade	Ministerial	\$ 800

YEAR	RECIPIENT	PROGRAM OF STUDY	AMOUNT
1969	Pamela Currie, Thomas Harries, Judith Kramer, Barbara Mueller, Richard Riggert, Lynn Stohs	Teacher	\$ 5,000
1970	Donald Brunner, Jules Fitz, Mark Staudte	Ministerial	\$ 3,300
1970	Dennis Borgers, Glenda Dryden, Ruth Fellbaum, Betty Holste, Kathy Kruse, Diane Luedders, Cathy Raguse, Arleen Tonn	Teacher	\$ 3,900
1971	Nancy Currie, Cynthia Harries, Cindy Rasmussen, Darold Reiner, Susan Schotte, Laverne Stohs	Teacher	\$ 4,600
1972	Kent Cole, Mark Peters, Marlin Rempfer	Ministerial	\$ 2,900
1972	Susan Heinze, Terry Holtheus, Mark Koch, Craig Mathews, Susan Peterman, Valeda Tegtmeier, Karen Vogts	Teacher	\$ 3,100
1973	Gene Bauman, Jerry Riggert, Steve Studtman	Ministerial	\$ 2,050
1973	Lois Anschutz, Kathryn Bohl, Susan Heinze, Gary Helms, Cynthia Rogge, Susan Peterman, Leroy Pralle, Valeda Tegtmeier, Janine Wollenberg,	Teacher	\$ 3,900
1974	Clark Currie, David Hutson, Stephen Wipperman	Ministerial	\$ 2,700
1974	Lois Anschutz, Ruth Bremer, Jeanette Eckhardt, Kurt Fuqua, Candy Hackathorn, Susan Heinze, Kathy Loving, Kent Mathews, Karen Neiman, Susan Peterman, Leroy Pralle, Cynthia Rogge, Karen Vogts	Teacher	\$ 2,600
1974	David Saving	Director of Christian Education	\$ 200
1974	Kathleen Herzberg	Deaconess	\$ 200
1974	Carol Herrs, Bennett Rene' Pistora	Parish Worker	\$ 300
1975	Gary Bertels, Keith Kohlmeier, Royce Popp, Gary Werling	Ministerial	\$ 2,400
1975	Michael Carey, David Doeple, Kent Mathews, Pamela Nahnsen, Susan Peterman, Cynthia Rogge, Gene VanHorn	Teacher	\$ 2,520
1975	Ronald Botka, Jill Muehlfelt, David Saving	Director of Christian Education	\$ 1,080
1976	Arthur Brinkmeyer, David Franker, David Hobus, Joel Hoelter, Mike Massaglia, Royce Popp, Gary Werling,	Ministerial	\$ 3,100
1976	Denise Alpers, Bethel Gehrt, Carla Hanson, August Hill, Rhonda Jenkins, Barbara Kaye, Phyliss Luedders, James Meier, Jill Muehlfelt, Pamela Nahnsen, Susan Peterman, Kathie Rahe, Cynthia Rogge, Patricia Rogge, Ardis Schoen, Ronelle Schuetz, Mary Taylor, Brian Truog, Tammy Wacks	Teacher	\$ 2,800

1976	Ronald Botka	Director of Christian Education	\$ 100
1977	David Helmer	Ministerial	\$ 2,050
1977	Vera Guebert	Director of Christian Education	\$ 300
1977	Lucinda Crome, Kathy Rahe, Ardis Schoen	Teacher	\$ 900
1978	Joel Hoelter, Tom Kent, Clyde Kieschnick, Tom Larson, David Linkugel, Royce Popp, David Renfro, Lynn Spencer, Lee Seetin, Brian Troug, William Usher, Gary Werling,		
1978	Denise Alpers, Lucinda Crome, Beverly Friedrichs, LuAnne Luedders, Becky Pennekamp	Ministerial	\$ 4,850
1978	Carla Jo Hanson, Susan VonFange	Teacher	\$ 1,050
1979	Matt Asher, Clyde Kieschnick, Brent Klein, Thomas Larson, Ray Leimkuehler, David Linkugel, David Renfro, Robert Schermbeck, Lee Seetin, Brian Troug, William Usher	Director of Christian Education	\$ 400
1979	Denise Alpers, Monica Bean, Bobby Broyles, Lucinda Crome, Beverly Friedrichs, Kent Rincker, Rebecca Wacker	Ministerial	\$ 4,161.40
1980	Matthew Asher, Thomas Harmon, Brent Klein, Paul Koschmann, David Linkugel, Leroy Pralle, David Renfro, Roger Schepmann, Lee Seetin, Kent Smith, Lynn Spencer, Kevin Vogts,	Teacher	\$ 1,750
1980	Mary Alexander, Bobby Broyles, Brenda Glenn, June Henrichs, Phillip Hesterman, Nancy Holthus, Jennifer Nahnsen, Lisa Paper, Kent Rincker, Rebecca Wacker, Martha Wolters,	Ministerial	\$ 5,300
1981-1982	Kirk Griebel, Roderick Hathaway, Brent Klein, Thomas Larson, David Linkugel, David Renfro, Richard Rikkli, Robert Schermbeck, Lee Seetin, Brian Truog, Kevin Vogts, William Usher	Teacher	\$ 1,950
1981-1982	Karen Alpers, Robert Beckler, Connie Ferry, Brenda Glenn, Gerald Gross, Ilene Hamsten, Phil Hesterman, Nancy Holthus, Brenda Meng, Lisa Paper, Paula Parker, Faith Poulos, Karen Rettig, Ruth Schaefer, Phyllis Schambroon, Gretchen Wachs, Rebecca Wacker, Lisa Wagner, Karen Waterman, Susan Weinkauff, Martha Wolters	Ministerial	\$ 3,650
1983-1984	Jeffrey Cunningham, Kirk Griebel, Tom Laskey, Richard Lohmeyer, Darrell Matthews, Michael Readinger, David Renfro, Brian Saunders, Walter Snyder, Kevin Vogts,	Teacher	\$ 3,400
1983-1984	Karen Alpers, Kathryn Bergdolt, Marc Debrick, Beverly Eberth,	Ministerial	\$ 6,000

YEAR	RECIPIENT	PROGRAM OF STUDY	AMOUNT
1984-1985	Brenda Gless, William Griffith, Ilene Hamsten, Phil Hesterman, Susan Kleist, Mary Mixon, Lisa Papen, Phyllis Schambron, Diane Stohs, Rose Straub, Tarah Thomas, Lisa Wagner	Teacher	\$ 4,250
1984-1985	Jeffrey Cunningham, Brian Saunders, Walter Snyder, Kirk Griebel, David Linkuegel, Richard Lohmeyer, Michael Readinger	Ministerial	\$ 7,000
1985-1986	Karen Alpers, Horst Kannenwisher, Melinda Kleopfer, Adola Johnson, Cynthia Long, Elizabeth McGinn, Linda Weaver, Anne Ziegler, Tamela Zorn	Teacher	\$ 4,500
1985-1986	Karl Bergdolt, Douglas Chinberg Scott Goltl, James Kellerman, Gene Lohmeyer, Mark Nuckols, David Renfro, Brian Saunders, Daniel Wehmeier, Kevin Vogts	Ministerial	\$ 5,300
1985-1986	Brenda Bass	Deaconess	\$ 350
1985-1986	Beth Balzer, Jeffrey Davis, Nancy Griffith	Director of Christian Education	\$ 1,200
1985-1986	Jeff Cunningham	Director of Evangelism	\$ 350
1986-1987	Adola Johnson, Bryan Deterding, Shawn Deterding, Susan Fehlhafter, Kay Meyer, Susan Nestler, Jackie Robidous, Lynette Tegtmeier, Linda Weaver, Tammy Zorn	Teacher	\$ 4,100
1986-1987	Douglas Chinberg, Scott Goltl, Lloyd Holland, James Kellerman, Daniel Metzger, Mark Nuckols, Daniel Wehmeier	Ministerial	\$ 5,350
1986-1987	Jeff Davis, Nancy Griffiths, Mari Hutson, Hank Jones	Director of Christian Education	\$ 1,600
1987-1988	Horst Kannenwisher Nancy Lehfeldt, Kay Meyer, Susan Nestler, Lynette Tegtmeier, Linda Weaver	Teacher	\$ 2,650
1987-1988	Scott Goltl, Bradford Grimm, Lloyd Helland, Richard Lohmeyer, Marvin Moss, Daniel Wehmeier,	Ministerial	\$ 3,700
1987-1988	Barbara Bipes Stacy Bryant, Jeff Davis, David Everson, Nancy Griffiths, Todd Wiechman	Director of Christian Education	\$ 1,850
1987-1988	Amy Schotte	Parish Worker	\$ 100
1988-1989	Miriam Herman, Ted Kaste, Nancy Lehfeldt, Kay Meyer, Susan Nestler, Kimberly Scholssman, Lisa Schultz, Lynette Tegtmeier, Andrew Wehling, Rachel Wehling Linda Weaver	Teacher	\$ 3,950
	Douglas Chinberg, Scott Goltl, Richard Harre, Don Hazelhuhn, Marvin Moss, Mark Nuchols, Greg Reiser, Charles Scott, Stephen		

1988-1989	Snyder, Andrew Wehling, Daniel Wehmeier, Kevin Wilson	Director of Christian Education	\$ 6,700
1988-1989	Stacey Bryant, David Everson		\$ 800
	Juanita Bromlow, Kathy Bauman, Marcia Dill, Nancy Griffiths, Miriam Herman, John Hill, Kristen Keister, Tonya Kirst, Christine Meyer, Keith Orr, Lynette Tegtmeier, Racher Wehling Todd Weichman, Larry Block, Galen Friedrichs, Scott Gotti, Richard Harre, Don Haselhaun, Lloyd Helland, Daniel Matzger, Mark Mellot, Craig Prestegord, Ronald Rock, Charles Scott, Stephen Snyder, Andrew Wehling, Daniel Wehmeier, Kevin Wilson	Teacher	\$ 4,530
1989-1990	Garry Block, Clint Grame, David Everson, Todd Weichman	Ministerial	\$ 7,600
1989-1990	Kathy Bauman, Nancy Becker, Barbara Bipes, Adam Bruenger, Stacey Bryant, Angela Davis, Kristin Keister, Tonya Kirst, Christine Meyer, Mike Ohlmeier, Keith Orr, Jennifer Rudzinski Sara Suhler, Deborah Wehling, Rachel Wehling	Director of Christian Education	\$ 1,450
1990-1991	Allen Brill, Larry Block, Galen Friedrichs, Scott Gotti, Don Haselhaun, Marvin Moss, Gregg Reiser, Ronald Rock, Michael Schotte, Charles Scott, Andrew Wehling	Teacher	\$ 4,000
1990-1991	Kathleen Clark	Ministerial	\$ 6,350
1990-1991	David Everson, Clint Grame, Jerrita Kohle Jennifer Marts	Deaconess	\$ 400
1990-1991	Nancy Becker, Kathy Block, Adam Bruenger, Kristin Carlson, Angela Davis, Amy Feek, Kristen Keister, Tonya Kirst, Christine Meyer, Sandra Nelson, Janet Obermueller, Mike Ohlmeier, Keith Orr, Janette Ruediger, John Sharp, Deborah Wehling, Todd Wiechman	Director of Christian Education	\$ 1,600
1991-1992	Larry Block, Don Haselhuhn, Michael Henrichs, Michael Liese, Craig Prestegord, Russell Reed, Charles Scott, John Sharp, Kevin Wilson	Teacher	\$ 5,570
1991-1992	Kathleen Clark	Ministerial	\$ 5,280
1991-1992	Janette Ruediger, Nathan Summers	Deaconess	\$ 650
1991-1992	Garry Block, Kathy Block, Adam Bruenger, Kristin Carlson, Martha Denny, David Everson, Amy Feek, Teresa Howard, Kristen Keister, Christine Meyer, Sandra Nelson, Sharon Raab, Jennifer Rudzinski, Kevin Rudzinski, Sara Suhler, Jeremiah Weber, Deboarh Wehling, T. J. Wiechman	Director of Christian Education	\$ 375
1992-1994	Financial Aid		\$ 7,480
			\$28,000

YEAR	RECIPIENT	AMOUNT
1994-1996	Financial Aid	
1996-1998	Financial Aid	
1998-2000	Financial Aid	
2000-2002	Financial Aid	\$ 34,795
2002-2004	Financial Aid	\$ 32,000
2004-2006	Financial Aid	\$ 36,000
2006-2008	Financial Aid	
2008-2010	Financial Aid	
2010-2012	Financial Aid	
2012-2014	Financial Aid	\$ 40,000
2014-2016	Financial Aid	\$ 40,000
2016-2018	Financial Aid	\$ 40,000

MISSION WALK SPECIAL OFFERINGS AT CONVENTIONS

Kansas LWML began Mission Walks in 2002. Some have included a Prayer Labyrinth. Some have included meditation and/or scriptural journaling.

YEARS	OFFERING/LOCATION	PURPOSE	AMOUNT
2002	Lutheran World Relief Baltimore, MD	Health Kits	\$ 3,998.83
2004	March for Missions		\$ 5,065.71
2006	Louisiana-Mississippi LWML	Support following Hurricane Katrina	
2008	LWML Heart to Heart Sisters St. Louis		\$ 2,184.50
2010	Carlos Family Guinea, West Africa	Missionary support	\$ 3,087.53
2012	LCMS World Mission-Mission Central Mapleton, IA	Missionary Josh Lange	\$ 2,803.00
2014	LCMS World Mission Turkey	Missionary Support	\$ 3,172.70
2016	Kansas State University International Student Ministry Manhattan		\$ 1,857.00
2018	LCMS World Mission-Mission Central Mapleton, IA	Missionary support	

LUTHERAN WOMEN'S MISSIONARY LEAGUE KANSAS DISTRICT 1993-2018 GOD'S GRACIOUS GIFT FUND GRANTS

In 1993, the LWML Kansas District received a gift from the estate of Hulda Peterman, Holyrood. A special account was named "God's Gracious Gift Fund." From the time of receiving that first check, many other memorials, estate gifts, and individual donations have been contributed. Grants are selected by the delegates for the amount specified and awarded immediately following each convention.

YEARS	DAY OF PRAYER OFFERING	LOCATION	PURPOSE	AMOUNT
1998	Church of New Jerusalem	Chajabai, Guatemala		\$ 4,600
1998	Kansas District LWML		Computers	\$ 9,500
1998	Lutheran Braille Workers	Yucaipa, CA		\$ 5,000
1998	Camp Toma Shinga	Junction City		\$ 15,000
1998	Guinea, West Africa Servant Event (Diane Jennerich, Shawnee; and Angela Jeppeson, Lawrence)			
2000	State Prison Ministry			\$ 6,000
2000	Lutheran Braille Workers	Yucaipa, CA		\$ 500
2000	Concordia Gospel Outreach	St. Louis		\$ 5,000
2000	Kansas District LWML			\$ 3,000
2000	St. John's Lutheran	Alma		\$ 5,000
2000	Grace Lutheran Preschool	Lyons		\$ 5,000
2000	Lutheran Family Retreat			\$ 2,000
2000	First Lutheran	Paola	Sonshine Child Center	\$ 2,000
2000	First Lutheran	Phillipsburg	Youth Group	\$ 4,000
2000	State Prison Ministry			\$ 3,500
2000	Lutheran Braille Workers	Yucaipa, CA		\$ 500
2002	Bethlehem Lutheran School	Sylvan Grove		\$ 5,000
2002	Immanuel Lutheran	Hepler	Parish Nurse Program	\$ 5,000
2002	Kansas District LCMS	Circuit 16	Advance Spanish Training	\$ 2,000
2004		Central America	Spanish Bibles for Lutheran Schools	\$ 5,000
2004	Our Redeemer Lutheran School	Herington		\$ 2,500
2006	Orphan Grain Train	Phillipsburg		\$ 1,750
2006	Good Shepherd Lutheran Church	Kansas City, MO		\$ 5,000
2006	Shiloh Manor Nursing Home	Canton		\$ 1,500
2006	Concordia Theological Seminary	Fort Wayne, IN		\$ 5,000
2006	St. Paul's Lutheran School	Cheney	Food Co-op	\$ 9,000
2006	Redeemer Lutheran	Arkansas City		\$ 5,000
2006	St. John Lutheran	Lincoln	Developmentally Delayed Ministry	\$ 500
2006	Lutheran Braille Workers	Yucaipa, CA	Mission of Love	\$ 750
2006	St. John Lutheran School	Alma		\$ 5,000
2006	University Lutheran Center Assoc.	Wichita		\$ 9,000
				\$ 5,000

YEARS	DAY OF PRAYER OFFERING	LOCATION	PURPOSE	AMOUNT
2006	Kansas District LCMS	Topeka	Supporting Small Town and Rural Parishes in Kansas	\$ 6,000
2006	Zion Lutheran Day Care	Vassar		\$ 3,000
2006	Our Saviour Lutheran	Kansas City	Spanish Ministry	\$ 2,750
2008	St. Paul Lutheran	Elisworth		\$ 12,000
2008	Trinity Lutheran	Garden City	Mission bus	\$ 5,000
2008	Immanuel Lutheran Early Childhood Ctr.	Junction City		\$ 2,300
2008		Gualan, Guatemala	Toilet module	\$ 7,300
2008	God's Little Saints Preschool	Atwood		\$ 1,000
2008		Guinea, West Africa	Computer & Satellite Modem	\$ 5,000
2008	Immanuel Lutheran	Lawrence	Blind Mission Outreach	\$ 3,700
2008	Concordia Seminary	St. Louis	Food Bank/Health-Personal Care	\$ 7,000
2008		Santiago Zamora, Guatemala	Computer and Printer	\$ 1,000
2008	St. Paul's Lutheran Preschool	Cheney		\$ 1,380
2010	Lutheran Home for Students	Zacapa, Guatemala		\$ 6,400
2010	Peace Lutheran Church	Greensburg	Rebuild after tornado	\$ 4,200
2012	Grace Lutheran Church	Wichita	Board of Social Ministry	\$ 1,050
2012	LLL/LWML Lutheran Family Retreat		Retreat scholarships	\$ 500
2012	Capstone Ministry	Kisumu, Kenya		\$ 2,350
2012	St. John Lutheran School	Alma		\$ 1,050
2012		Orlovka, Kyrgyzstan	Orphanage playground equipment	\$ 1,050
2012	Zion Lutheran Church	Offerle		\$ 1,000
2014	Concordia Seminary	St. Louis		\$ 428
2014	Lutheran Student Center at WSU	Wichita		\$ 428
2014	St. Paul Lutheran Preschool	Preston		\$ 428
2014	Kansas Nebraska Good News Radio	McCook, NE		\$ 428
2014	In His Hands Preschool/Day Care	Cheney		\$ 428
2014	LLL/LWML Lutheran Family Retreat		Family scholarships to camp	\$ 428
2014		Humboldt	The Christmas Store	\$ 291
2016	Capstone Ministries	Kisumu, Kenya		\$ 2,690
2016	Lutheran Heritage Foundation	Macomb, MI		\$ 2,000

2016	Trinity Lutheran	Garden City	Come Build Hope in Mexico	\$ 2,690
2016	Lutheran Student Center at WSU	Wichita		\$ 1,000
2016	Hope Lutheran School	Shawnee		\$ 2,690
2016	Lutheran Valley Retreat	Woodland Park, CO	Bind the Bruises	\$ 500
2016	Knot Sew New Quilters	Dodge City		\$ 250
2016	Bethany Lutheran School	Overland Park		\$ 2,075
2016	Immanuel Lutheran	Norton		\$ 350
2016	Lutheran Valley Retreat	Woodland Park, CO	Horse Ministry	\$ 500
2016	Holy Cross Lutheran	Wichita	Summer Art for Community Kids	\$ 2,443

SPECIAL DONATIONS AND CONVENTION OFFERINGS

Kansas LWML typically earmarks the first offering of the convention for the mission grants for the coming biennium; those are not listed here. Any other convention offerings may be designated for other purposes and are paid following the convention.

YEARS	SPECIAL OFFERINGS	LOCATION	PURPOSE	AMOUNT
1946	European Relief Efforts	Collected by Circuits	WW II Relief in Europe	\$ 136.35
1948	2 nd Biennial Convention	Wichita	Deaconess Scholarship Fund	\$ 132.22
1950	3 rd Biennial Convention	Leavenworth	University Chapel Funds at Manhattan and Lawrence	\$ 168.27
1952	4 th Biennial Convention	Winfield	Deaconess Scholarship Fund	\$ 234.74
1954	5 th Biennial Convention	Hutchinson	Deaconess Scholarship Fund	\$ 336.99
1956	6 th Biennial Convention	Topeka	Faith Lutheran, Kansas City	\$ 351.55
			Foreign Missions	\$ 151.55
1958	7 th Biennial Convention	Colby	Seminary Students in Togo	\$ 362.23
1960	8 th Biennial Convention	Great Bend	Medical Missions	\$ 516.62
1962	9 th Biennial Convention	Salina	Lutheran Social Services	\$ 521.66
1964	10 th Biennial Convention	Dodge City	Scholarship Fund	\$ 512.42
			Lutheran World Relief for the Alaska disaster (earthquake and tsunami)	

YEARS	SPECIAL OFFERINGS	LOCATION	PURPOSE	AMOUNT
1966	11 th Biennial Convention	Kansas City	International LWML	\$ 129.95
1968	25 th Anniversary Thank Offerings	12 th Biennial Convention, Wichita	Inner City Mission, Wichita International LWML, St. Louis Wichita State University	\$ 389.73 \$ 575
1970	13 th Biennial Convention		Lutheran Student Center	\$1,000
1972	14 th Biennial Convention		Pittsburg State College Lutheran Student Center	\$ 500
1972	14 th Biennial Convention		LCMS Armed Services Commission	\$ 357.94
1974	15 th Biennial Convention		Lutheran Mission of the Good Shepherd KC, MO	\$1,452.60
			Concerned Christians of Salina, Kansas	\$ 550
			Memorial of Mrs. C.A. Hass	\$ 690.17
			Winfield State Hospital and Training Center – Salary for Parish Worker	\$ 500+
1976	16 th Biennial Convention			
1978	35 th Anniversary Thank Offering	17 th Biennial Convention	Six Kansas District LCMS Campus Ministries	\$1,083.45
1980	18 th Biennial Convention		Lutheran Mission, Guatemala City	
1982	19 th Biennial Convention		Spanish Literature Collating Machine L.A.M.P. Mission, Edmonton, Alberta	\$1,403.92
1982	40 th Anniversary Thank Offering		Kansas District LWML Projects	\$5,868.38
1984	20 th Biennial Convention	19 th Biennial Convention	Lutheran Social Service Love Gift for "People Ministries"	\$10,000 \$2,972.40
1986	21 st Biennial Convention			
1988	22 nd Biennial Convention			
1990	23 rd Biennial Convention			
1992	24 th Biennial Convention			
1994	25 th Biennial Convention			
1996	26 th Biennial Convention			

1998	27 th Biennial Convention	Lutheran World Relief, Baltimore	\$ 9,003
2000	28 th Biennial Convention	Good Samaritan Quilt Plaza (engraved brick of each of the KS District 14 zones)	
2002	29 th Biennial Convention	Bethesda Lutheran Group Home Wichita	\$1,793.41
2002	60 th Anniversary Thank Offering	LWML Endowment Fund, St. Louis	\$3,488.05
2004	30 th Biennial Convention	Orphan Grain Train Shipping Expenses	\$3,463.47
2006	31 st Biennial Convention		
2008	32 nd Biennial Convention		
2010	33 rd Biennial Convention	Seminary Food Banks	
2012	34 th Biennial Convention	Ft. Wayne & St. Louis Rev Luke Kammrath and Rev. Scott Eberlein; KC, KS Outreach to the homeless	\$4,209.60
2014	35 th Biennial Convention	Globally Engaged in Outreach (GEO) Missionary Support in Africa	\$3,285.23
2016	36 th Biennial Convention	Lutheran Heritage Foundation Macomb, MI	\$4,132.28
2018	37 th Biennial Convention	LCMS World Relief and Human Care- Disaster Response, St. Louis	\$3,882.75

LUTHERAN WOMEN'S MISSIONARY LEAGUE KANSAS DISTRICT 1956-2018 DAY OF PRAYER

Kansas LWML began supporting Day of Prayer in 1956, encouraging use of the LWML Prayer Service. Offering recipients are recommended by the Gospel Outreach Department, and they are selected by the Board of Directors. Societies and Zones may hold a Day of Prayer Service at any time during the year.

YEARS	DAY OF PRAYER OFFERING	LOCATION	PURPOSE	AMOUNT
1959	Guinea Lutheran Mission	Guinea, West Africa	Girls' School furnishings and equipment	\$ 630.61
1960	Lutheran World Relief			\$ 710.68
1961		Obit Idim, Nigeria	Chapel	\$ 1,748.58
1962	New Guinea Missions			\$ 1,000.00
1962	India Evangelical Lutheran Church	South India-South Asia	Aid in erecting churches	\$ 1,000.00
1962	Rev. Donald Northole	Philippines	Books for training lay workers	\$ 161.60
1963	Seminaria Concordia	Porto Alegre, Brazil		\$ 1,000.00
1963	Seminaria Concordia	Villa Ballester, Buenos Aires, Argentina		\$ 1,000.00
1963	Institute Corcordia	Sao Paulo, Brazil		\$ 557.12
1964	Lutheran Social Services	Wichita		\$ 1,000.00
1964	Kansas District Board of Missions	Kansas City, KS	Faith Lutheran Church	\$ 500.00
1964	LCMS Dept. of Social Welfare	St. Louis	Inner-city Program	\$ 500.00
1964	St. John's College	Winfield	Development Fund	\$ 392.62
1965	Concordia Seminary	Taiwan	Student Aid	\$ 500.00
1965	Southeast Asia		Bible Correspondence work	\$ 500.00
1965	Fukushima Orphanage	Japan		\$ 466.55
1965		Korea	Braille Printing Press	\$ 466.54
1966			Portals of Prayer Sight-Saving Editions	\$ 1,000.00
1966		Brazil	Scholarship for Theological Student	\$ 1,100.00
1967	Children's Christian Concern Society—Lutheran Parochial School (Mr. & Mrs. Jim Jorns)			
		Zacapa, Guatemala	Boarding House	\$ 2,729.21
1968	Messengers of Christ (Mr. & Mrs. Carl Nienheuser)		Gola Tribe in Nigeria	
			Bible Translators	\$ 2,160.19

1969	Messengers of Christ (Mr. & Mrs. Carl Nienheuser)	Gola Tribe in Nigeria	\$ 2,363.00
1970		Bible Translators	
1970		Printing "My Father's World in Sight Saving Print; Printing multi-colored New Testament Sunday School pictures for use in the mission fields	\$ 1,309.29
1971	Mission		\$ 1,309.29
1971	Lutheran Braille Workers	Additional site-saving center	\$ 1,406.65
1972	High School Students	Student Scholarship/Tuition	\$ 1,406.65
1972	Korea Lutheran Mission	Evangelistic Outreach	\$ 1,575.00
1973	Kansas District LCMS	Correspondence Course	\$ 1,222.55
1973	Kansas District CEF	Sponsor a DCE to a group of congregations	\$ 1,000.00
1974	Kansas District	Lutheran Student Center at Pittsburgh State University	\$ 1,915.04
1974		Creative Ministries	\$ 800.00
1975	Winfield State Hospital	Campus Ministry at Fort Hays State University	\$ 1,936.47
1975	Evangelical Lutheran Church	AV Equipment	\$ 1,000.00
1976		Chapel	\$ 2,274.79
1976	Wichita State University	New Mission	\$ 1,447.97
1977	St. John's College	Lutheran Campus Center	\$ 1,447.97
1977	Lutheran Social Service	Meditation Hill	\$ 1,500.00
1978	Haskell LIGHT, Inc.		\$ 1,343.36
1979	Lutheran Mission of the Good Shepherd		\$ 2,467.22
1979	Lutheran Church	Medical Assistance	\$ 1,000.00
1980	Lutheran Social Service		\$ 2,909.44
1981	State Hospital, Attn. Chaplain Krause	Furnishings	\$ 2,599.46
1981	Makay Lutheran Church	Indian Ministry	\$ 1,000.00
1982	Kansas District LCMS	Singles Ministry	\$ 2,169.13
1982	LCMS	World Hunger project	\$ 1,000.00
1983	Gutnius ("Good News") Lutheran Church		\$ 2,053.00
		Papua, New Guinea	\$ 2,736.61

YEARS	DAY OF PRAYER OFFERING	LOCATION	PURPOSE	AMOUNT
1984	Hispanic Ministry	Southwest Kansas		\$ 3,765.33
1985	Kansas State University Campus Ministry	Manhattan	Library	\$ 2,000.00
1985	Ongoing Ambassadors for Christ, Inc.	Winfield		\$ 1,158.36
1986	St. Luke's Lutheran	Kansas City	Emergency Assistance	\$ 3,425.51
1987	Concordia Seminary	Hong Kong	Scholarships	\$ 3,057.59
1988	Lutheran Braille Workers	7 Kansas work centers	Paper for Braille	\$ 3,237.42
1989	La Santa Cruz Lutheran	Garden City	Van	\$ 3,466.30
1990	Faith Lutheran	Kansas City	Midweek School	\$ 3,497.58
1991			Special Scholarship Fund	\$ 3,734.00
1992				
1993	Kansas District LCMS		Uplifting Pastor's Family program (33 clergy couples participated)	
1994				
1995				
1996				
1997				
1998	Laborers for Christ	St. Louis		\$ 4,446.82
1999	Kansas Lutheran Historical Society		Wetzel Cabin	
2001	Hollis Renewal Center	Bonner Springs		\$ 4,461.98
2003	Lutheran Valley Retreat	Woodland Park, CO		\$ 3,684.15
2004	Kansas District LCMS	Topeka	Rural Ministry Task Force	\$ 2,785.74
2005	Haskell LIGHT/Riverview	Lawrence		\$ 2,538.07
2006	LCMS World Relief	Baltimore, MD	Shipping costs	
2007				
2008				
2009				
2010	Education Loan Repayment Fund		Church Worker loan repayment	\$ 728.02
2011	Kansas District LCMS	Guinea, West Africa	Guinea Women's Ministry	\$ 4,912.16
2012	Kansas District LCMS Disaster Fund	Kansas	Disaster support	\$ 4,288.92
2013	Guinea Task Force	Guinea, West Africa	Choir and other mission support	\$ 4,000.86
2014	Children's Christian Concern Society	Nigeria	School bus	\$ 3,907.61

2015	KNGN-Kansas Nebraska Good News	McCook, NE	Radio Broadcast support	\$ 2,814.00
2016	Ed and Cherie Auger	Caymen Islands		
2017	Lutheran Deaf Mission Society	and Nicaragua	Missionary support	\$ 2,638.84
2018	Fairmount Coffee Company	St. Louis, MO	Mission support	\$ 1,894.79
		Wichita	Lutheran Student Center at WSU	\$ 2,089.61



2016-18 Executive Committee

Back: Rev. Robert Grimm, Shelly Keller, Elaine Engelman, Sherry Meier, Kathryn Richard, Gloria Raab, Rev. Jay Hobson
 Front Row: Brenda Piester, Bernie Reetz, Kim Burdett, Sherri Rose;
 L- Laura Hunter, and R-Ella Schempp

Acknowledgements:

Primary Source: LWML Kansas District Archives

The preparers of this 75th Anniversary History book acknowledge the help of the following people in collecting biographical information of past presidents:

Cheryl Barnhardt, Lyons—*Renata Mehl*

Wanda Sieker, Ellinwood—*Molly Boger*

Judy Vogel and

Donna Browning, Kansas City—*Nina Buck*

Helen Mitchell, Herington—*Estella Bowers*

Hilda Zerfas, Manhattan and

Virginia Dorman, Olathe—*Helen Noller*

Donna Briggeman, Preston, Nancy Briggeman, and Carol Weins—*Elnora Briggeman*

Phyllis Von Fange, Salina—*Eunice Wehmeier*

Dora Zentner, Florida District LWML—*Joan Sommer*

Researched and prepared by LWML Kansas District Archivist-Historians Esther L. Ideker and Judy Carlson with the assistance of President Brenda Piester, compiled and formatted by Tammy Songer.

