



# The Kansas Sonshine

**Volume 76: Number 3**

**SUMMER 2019**

## LUTHERAN WOMEN'S MISSIONARY LEAGUE KANSAS

**New Biennium + New Mission Grants + New Goals to Reach = *In Praise to the Lord!***

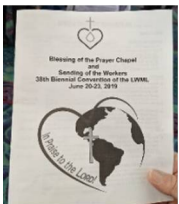
Greetings, LWML Sisters-in-Christ!

It was **my privilege** to represent Kansas as your President at the 38<sup>th</sup> LWML Convention—we definitely weren't in Kansas anymore! I could easily put 50 different things on a list of what was awesome about the convention—Opening Worship, Bible Study led by Donna Pyle, voting for the Mission Grants, Joe Castillo—the Sand Artist, singing along with Rev. Dr. Dien Ashley Taylor, seeing the new Mite Box design—plus many, many more. As we come down from the “high” of the convention, we have much work before us. Rev. Dr. Brent Smith asked that we keep our focus on our Boss and tell **New Biennium + New Mission Grants + New Goals to Reach = *In Praise to the Lord!*** others of His salvation and proclaim His glory.

At the end of her first Bible Study session, Donna Pyle challenged us to reflect: “Are we brave for the Lord individually?” as she dug deep into the theme verse, *Sing to the Lord, all the earth! Tell of his salvation from day to day. Declare his glory among the nations* (1 Chronicles 16:23-24).

Here are my **Top Thirteen “Behind the Scenes” moments** under the convention theme, ***In Praise to the Lord!***

**13. Sponsoring the 7th hole in the Tee Up 4 Mites** golf outing with other Kansas Executive Committee members. The event raised \$9,643.60 plus an additional \$40K from a corporate sponsor. ***In Praise to the Lord! – for creative ways to raise funds for missions!***



**12. Worshipping in the Blessing of the Convention Prayer Chapel** early morning Prayer Service and signing the Memorial Book with the names of Kansas Lutheran Women in Mission who earned their crown of glory this past biennium.

***In Praise to the Lord! – for our rich legacy and those women who have served before us!***

**11. Serving Humbly.** Due to long lunch lines and several other errands I needed to complete, it was too late for me to attend the Friday Interest Luncheon. I took my box lunch and ate at my delegate's seat—I was one of maybe 10 people in the entire assembly hall. I saw a woman go up on stage carrying a black bag and wondered what she was doing—she was there to take care of the plants and floral arrangements (the one shown at the right was silk). She diligently watered each one and then clipped any blooms that were starting to fade. If any of the stems needed to be readjusted, she did that. Who knew that one of the tasks of the convention host committee was to have someone take care of the plants? Did anyone notice what she had done? Probably not. But would we have noticed by the end of the convention if she was NOT completing her task? Absolutely—we would have said, “Those plants need some water,” or “Someone needs to clip those blooms that have wilted.” This reminded me of the “One Body but Many Parts” passage that Paul wrote to the Corinthians in chapter twelve, “You are the body of Christ. Each one of you is a part of it.” This is such a wonderful application to our Lutheran Women in Mission groups—each woman, and the skills and talents she brings to the group, is important. EVERY WOMAN is needed for the success of the group. I don't know who the “plant lady” was or where she was from, but I am grateful for her humble service.





**10. Witnessing Generous Living.** Seven Wichita Zone gals (left) invited a Kansas YWR to join their group when they could not fly out of Dallas on their way to the convention, and two Kansas City CrossRoads gals assisted a California YWR when flights were canceled and they could not fly out of Mobile after the convention. Many, many acts of kindness and generosity were repeated again and again as travel plans were interrupted, delayed, canceled, and finally rescheduled. Thank you, kind-hearted and caring Lutheran Women! *In Praise to the Lord! – for Sisters-in-Christ!*



**9. Finding her and sharing a hug with our LWML Heart-to-Heart Sister—**Debora, from Florida—who Shelly Keller, Coleen Ancell, Ann Lindquist, and I met and connected with in Portland in 2009. *In Praise to the Lord! – for cross-cultural/cross-country friendships!*



**8. Working in the Leadership Development booth in the “Jubilee Junction” Exhibit Hall and telling others about the new Mailbox Member program** (each local group will receive a copy at the Kansas Assembly of Leaders in August). *In Praise to the Lord! – for ways to connect more women to LWML!*



**7. Sending off and meeting the Kansas Bus and its group of Wonderful Witnessing Women** (plus Pastor Rather). Thank you, Donna Burton, for coordinating this journey! *In Praise to the Lord! – for servant leadership and new friendships!*



Left:  
Bus Riders 2019  
Right: Kansas Archivist/Historian Esther Ideker, the most experienced bus rider, with YWR Brenae Ard, the newest bus rider.



**Sing to the Lord, all the earth! Tell of his salvation from day to day. Declare his glory among the nations (1 Chronicles 16:23–24).**



**6. Carrying the Kansas Banner** was such an honor for me as I was accompanied by Sherri Rose and the four YWRs. The cross of Christ is the center of the banner and of a Christian's life. Bursting forth from the cross, showers of blessings, love, and the grace of Jesus Christ pour down on God's children. In thanksgiving, believers in Christ--represented by the uplifted hands of men, women, and children praise and love God through their worship, hymns of praise, and willing and faithful service--to the Lord, with gladness! The banner was designed by Connilee Myers and crafted by Judy Schroeder; both are members of Holy Cross Lutheran, Wichita, Kansas.

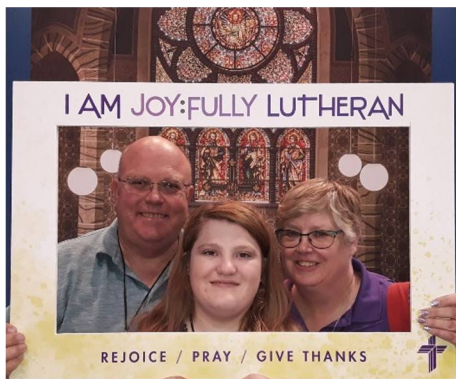
***In Praise to the Lord! – for hands to create in service to Him!***



**5. Participating in the Mission Walk** with 848 walkers who raised over \$59,612.79 for Missions! What a fun way to start the day! (Left: Heather Van Slyke and Kathie Thurman)

***In Praise to the Lord! – for feet to walk in service to Him!***

**4. Being with families who attend the convention – *In Praise to the Lord! – for grandmothers, moms, sisters, aunts, cousins, and friends to tell the LWML story to the next generation!***



From Left: The family of Pastoral Counselor Rev. Dr. Rocco and Janine Mallardi; YWR Shelisa Fick with her dad Daniel Fick and mother/Southwest Zone Delegate Sherry Fick; Cambry Schrag and Amy Schrag; Janice Brehm, Lindsey Bergner and Shannon Bergner; (Right) National Leadership Development Chairman Susan Brunkow and YWR Kristen Brunkow O'Shea; (Far Right) Sisters Marj Aufdemberg, Quarterly Manager, and Mary Dohl, Wichita Zone President.



**3. Sharing a dinner with the Heart-to-Heart District Leaders,**

including Kansas's own Sherri Rose, now trained as a Leader. I was seated by Joy, a convert from Islam, who had suffered extreme physical abuse from her father when he found out of her Christian faith. She now lives in the United States and exudes JOY for sharing Jesus with others—especially to those who are Muslim in her new community. Isn't she beautiful? Please keep her in your prayers as she shares the message of the saving grace of Jesus Christ with others, especially with immigrants.

***In Praise to the Lord! – for outreach to ethnic women across Kansas and far beyond!***



**2. Getting to know Kansas's four Young Woman Representatives:** Kristen Brunkow O'Shea, Brenae Ard, Sarah Winkler, and Shelisa Fick—pictured here at their luncheon with Bible Study Leader Donna Pyle, President Patti Ross, and Humorous Interrupter Jan Struck. They are on fire to “Serve the Lord with Gladness!”

***In Praise to the Lord! – for young women!***



**1. Emailing Linda Tape, Holy Cross Lutheran—**

**Wichita, to tell her that the Mission Grant for Lights for Christ Scholarships for Divine Savior Lutheran Church, Zacapa, Guatemala, (approved and processed through the Kansas District) to work with children living in the landfills in Guatemala was selected by vote of the delegates as a Mission Grant in the 2019-2021 biennium.**

Her response was pure thankfulness and joy: “God is so good! So many children will be helped!”

***In Praise to the Lord! – for generous and faithful Mite Offerings to fund these Mission Grants!***

So, dear Sisters, as we look forward in the **2019-2021 NEW Biennium**, we have **NEW opportunities:** to “tell of His salvation,” to fill our **NEW Mite Boxes** for **NEW Mission Grants**, to read **NEW books**, to dig deep in **NEW Bible studies**, to re-energize our meetings by using the **NEW 2019-2021 reSOURCEs for Planning Programs**, to use the **NEW Mailbox Member** materials to “declare His glory among the nations”, to invite a friend to join us in a **NEW LWML service project**, and to demonstrate faithfully how **Lutheran Women in Mission Serve the Lord with Gladness!**

***In Praise to the LORD!***

President Brenda Piester • [president@kansaslwml.org](mailto:president@kansaslwml.org)



The LWML Kansas District was able to send FOUR **YOUNG WOMAN REPRESENTATIVES** to the Convention in Mobile. They are Brenae Ard from the Wichita Zone, Shelisa Fick from the Southwest Zone, Kristen Brunkow O'Shea from the Topeka Zone, and Sarah Winkler from the Hutchinson Zone.

***“These Mite Boxes are POWERFUL...We need to make sure that everyone at church has one.”***

***-- YWR Shelisa Fick, when asked the most important thing she learned from the convention.***

Watch for more news and convention stories from the YWRs in the Fall Issue of *The Kansas Sonshine*.

**NEW MITE BOXES WILL BE DISTRIBUTED AT THE KANSAS ASSEMBLY OF LEADERS IN AUGUST.**



**Counselor's Corner**  
**Pastor Rocco Mallardi**  
**Junior Pastoral Counselor, Kansas LWML**



Summer is time that is identified by smells, the smell of fresh cut grass, the smell of a fresh rain, and the smell of smoke lofting from the grill, calling all to come and eat a feast. One evening I went out to the grill. As I stoked the fire and got the steaks ready, I went into the spice cabinet to pull out a spice I had never used before. The name of it was "Burnt Sacrifice." On the back of the package, it proudly boasted these words from the Prophet Isaiah, "On this mountain the LORD of hosts will make for all peoples a feast of rich food, a feast of well-aged wine, of rich food full of marrow, of aged wine well refined." (Isaiah 25:6) These words of the prophet are not an end in and of themselves they don't just reflect God's goodness in this life. We all love a feast of rich food, a feast of well-aged wine, but these words of the prophet are about so much more. They are pointing the way, the way to the cross, where our Lord and Savior, God's only Son, would put an end to the sin that binds and open to us the heavenly feast.

So as summer time rolls, let us not stray from the Lord, instead let us allow the little things in life, like the smell of steak on the grill, remind us of Christ forgiveness and the heavenly feast that we are all awaiting.

**IN THIS ISSUE—**

Page 1—4: From the President  
Page 5: Counselor's Corner  
Page 6: Communication  
Page 7 : Organizational Resources  
Page 8: Special Focus Ministries  
Pages 9: Caring Service  
Page 10: Christian Life  
Page 11: Gospel Outreach

Page 12: Financial News  
Page 13-16: Grant Information  
Page 17: District and Zone News  
Page 18: How to Donate to LWML  
Page 19: Remittance Voucher  
Page 20—21: Christian Life Retreat  
Page 22: 2020 LWML Kansas District convention

## COMMUNICATION

Shelly Keller

VP of Communication

[communication@kansaslwml.org](mailto:communication@kansaslwml.org)



Are you a  
Kansas 'Sonflower'?

Sunflowers symbolize adoration, loyalty and longevity. Sunflowers represent joyfulness. Much of the meaning of sunflowers stems from its namesake, the sun itself. As it grows, the sunflower faces the sun. Sunflowers are known for being “happy” flowers, making them the perfect gift to bring joy to someone's (or your) day. Since the sunflower is such a versatile and interesting flower, sending someone sunflowers tells them that they are truly special to you. The center of the sunflower, where the florets bloom, is actually filled with hundreds of flowers, all growing individually.

You could think of Jesus as the ‘Sonflower’ and all Christians as the florets. We have a relationship with Jesus, God’s Son, through love and faith, and we (the florets) bloom in that love and faith through His Word and worship and forgiveness of sins. Jesus loves us! We can also be the flower and shine brightly and share Jesus with everyone around us. That was evident at the recent national LWML convention in Mobile, Alabama. Everyone from Kansas wore a sunflower, which identified where we were from. You could see the flowers from a long distance away, and most everyone had smiles on their faces, showing the love for Jesus in their hearts, as they studied the Word, sang praise, and met many other wonderful people, who also love Jesus.

Kansas designated the wild native sunflower as official state flower in 1903, a flower which has given Kansas the world-wide name of: The Sunflower State. Are you a Kansas ‘Sonflower’, full of love for Jesus? Look to Jesus, our Sonflower, for strength and guidance, and be like the sunflower, full of color and joy, and appreciate the great things in your life.

The Communication Committee may also help you spread the joy and love of Jesus through their work in the LWML Kansas District. If you have questions or need assistance regarding *The Lutheran Woman’s Quarterly*, *The Kansas Sonshine* newsletter, the LWML Store, the Kansas District LWML Facebook page, the website, the district directory, or technology, please contact us. The contact information and email address for each person on the committee can be found on the website on the ‘Contact Us’ page.

## ORGANIZATIONAL RESOURCES

**Elaine Engelman**  
**VP of Organizational Resources**  
[resources@kansaslwml.org](mailto:resources@kansaslwml.org)



Keep up the good work! A couple of zones have ratified or are ready to ratify updated bylaws and several more are in the middle of the process. Hopefully they will have their bylaws ready to present at their fall zone events. For those zones that we haven't looked at yet, I would suggest you find the latest updated copy you have and make sure it is ready to email; then when the committee contacts you it will be ready to go. The four zones we haven't started yet are Wichita, Southwest, Southeast, and Lincoln.

We all know that volunteers are an important part of our organization. As leaders we know that recognizing them and a job well done can be an important motivator as they continue to serve. Here are a few suggestions to recognize and honor your volunteers:

- Make a telephone call to express your thanks
- Write a personal note
- Include their accomplishments in a newsletter
- Reward them with a meaningful gift
- Host an appreciation event
- Invite them to dinner
- Thank them in person
- Send an email expressing your appreciation
- Post photos of your volunteers on a church bulletin board or website

The LWML resource [Volunteers in Christ's Ministry](#) includes more information on honoring volunteers.

### DISTRICT NOMINATING COMMITTEE

The District Nominating Committee is seeking willing applicants/nominees to be placed on the ballot for the 2020 LWML Kansas District Convention for the following district positions: President, VP of Caring Service, VP of Communication, Financial Secretary, and Recording Secretary. The deadline for submitting nominations is September 1, 2019. These district officers will be elected by the delegates at the 2020 Convention in Topeka. We are looking for any nominations you may have from your zone, or anyone whom you may know from another zone that could fill a position. Please do what you can to help fill these positions on the ballot. Any suggestions are welcome. Thank you for your prayers considering nominees, and also prayers if you would like to be a nominee.

Yours in Christ, *Debbie Jenne* [nominations@kansaslwml.org](mailto:nominations@kansaslwml.org)

## ORGANIZATIONAL RESOURCES

Jill Lowe  
VP of Special Focus Ministries  
[ministries@kansaslwml.org](mailto:ministries@kansaslwml.org)



Happy Summer! I pray your summer has been relaxing and reviving! As a teacher, summer is always a wonderful break from the normal for me. Add in national convention in Mobile with my two daughters and mom, and you can't get much better than that! Convention was a wonderful, inspiring experience. Hearing the mission speakers from the mission projects we support is so awesome, and worship, praise, and communion with over 3,000 Women in Mission is unbelievable! Our four Kansas Young Woman Representatives were there to experience everything, learn about LWML, and be inspired to join in back here in Kansas! You will hear from them in the Fall Sonshine and at upcoming LWML events.

We want to continue to inspire and include more young women in our district. Please be praying for and considering a young woman you could invite to be a YWR at our district convention in April 2020! The application for zone YWRs to the district convention is on the website. We are already planning for convention activities and are eager to meet the new YWRs!

Also, watch for upcoming information about convention t-shirts!

God's Blessings on the rest of your summer!





## CARING SERVICE

Laura Hunter  
VP of Caring Service  
[caringservice@kansaslwml.org](mailto:caringservice@kansaslwml.org)



### Fun facts on the Texas Stamporee Project:

The project has collected over \$42,000 for Lutheran World Relief!

This took over 65 million stamps!

It takes approximately 27,000 stamps to make one lb.!

Sara Frank, Stamporee project coordinator in Texas, is so appreciative of all the stamps provided by the ladies of Kansas LWML. Reminder, all stamps should be trimmed to ¼ inch around the stamp before turning in. Stamps can be brought to any zone rally/event (and given to the District Rep), to KAOL (Kansas Assembly of Leaders held in the summer each year), or to the District Conventions.

## Kansas Assembly of Leaders 2019 - "Follow the Leader"

<b>WHEN:</b>	Friday, August 2 – Saturday, August 3, 2019	
<b>WHERE:</b>	Holy Cross Lutheran Church, 600 N. Greenwich Rd., Wichita	
<b>BRING:</b>	✕ Bible or Device with a Bible app	
	✕ \$\$ for Mite Challenge and Shopping	
	✕ Donations for Ingathering to Orphan Grain Train and the Grace Lutheran Food Pantry	
	✕ "Gently Used Treasures" to sell; Proceeds go to God's Gracious Gift Fund (GGGF)	
	✕ 3-Ring Binders and All Materials WILL BE PROVIDED	
<b>WHO:</b>	Zone Presidents:	August 2, beginning at 4:00 p.m. to August 3
	District Committee Chairmen:	August 2, BOD Meeting beginning at 5:45 p.m. to August 3
	Special Appointed Personnel:	August 2, BOD Meeting beginning at 5:45 p.m. to August 3
	2020 Convention Chairmen:	August 2, BOD Meeting beginning at 5:45 p.m. to August 3
	District Committee Members:	As Needed; and August 3: 8 am Registration; 8:45 am Opening
	Zone Committee Chairmen & Committee Members:	August 3: 8 am Registration; 8:45 am Opening
	Zone Pastoral Counselors:	August 3: 8 am Registration; 8:45 am Opening
	Zone Archivist-Historians:	August 3: 8 am Registration; 8:45 am Opening
	<b>ALL SOCIETY/Group PRESIDENTS:</b>	August 3: 8 am Registration; 8:45 am Opening
	District Executive Committee:	August 1: 6:30 p.m. to August 3

## CHRISTIAN LIFE

Allison Lehmann  
VP of Christian Life  
[christianlife@kansaslwml.org](mailto:christianlife@kansaslwml.org)



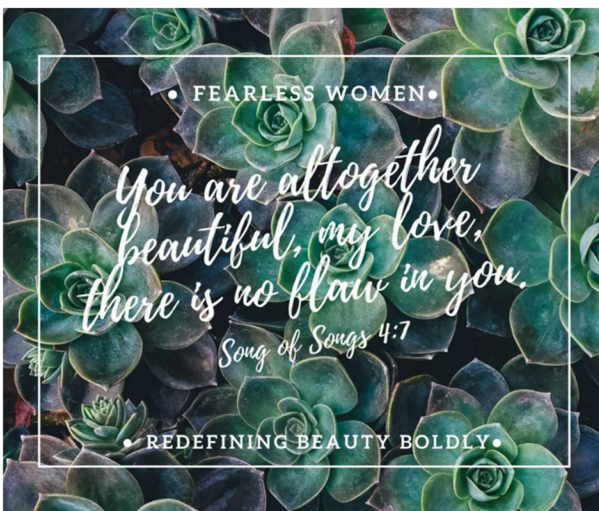
You are altogether, beautiful, my love, there is no flaw in you (Song of Songs 4:7)

### **Fearless Women, Redefining Beautiful Boldly.**

‘You are beautiful. You might not believe it, but you are.

The world might tell you that your beauty comes from your curly hair or your long eyelashes or your perfectly spaced freckles, but the truth is you are beautiful because of who you are in Christ.’

-Heidi Goehmann



Sound like something you would like to hear more of? This is the verse and theme for this years Christian Life Retreat, from the speaker Heidi Goehmann. The retreat will be November 1 - 2, 2019 in Salina, at the Ambassador Hotel and Convention Center. You can print off the retreat forms, fill out and send. Invite one or two, or even more of your friends and enjoy a beautiful weekend!

If you had the opportunity to attend the National Convention recently, we pray that you were uplifted by devotions, Bible studies, speakers, joyous praises, and fellowship. Share your experiences with your friends, societies, and zones; be in Praise with the Lord!

Sing to the Lord, all the earth! Tell of his salvation from day to day.  
Declare his glory among the nations (1 Chronicles 16:23–24a).



# GOSPEL OUTREACH

**Janice Cundiff**  
**VP of Gospel Outreach**  
**[outreach@kansaslwml.org](mailto:outreach@kansaslwml.org)**



The 2020 Kansas District Convention in Topeka is less than a year away. It is time to be writing your GGGF/ Mission Grant applications and get them sent in. The applications must be received by September 1, 2019. Please visit the LWML Kansas District website at [www.kansaslwml.org](http://www.kansaslwml.org) to download the new combined GGGF/Mission Grant form from the Gospel Outreach page. Please send all applications to Janice Cundiff, VP of Gospel Outreach, and use the email address [grants@kansaslwml.org](mailto:grants@kansaslwml.org) for any questions regarding the application process or to email the application. Thanks.

The first six Mission Grants have been paid. The next Mission Grant to be funded will be Grant #7 for \$4,000 to Capstone Ministries, Kisumu, Kenya.

The grant will pay for a week-long camp experience for about 40 boys, counselors, and their families, who have been rescued from the street life in Kenya. This provides the opportunity to interact with other boys who also have been reconciled with their families. The retreat is based on Christian teachings and provides the opportunity to learn about Christ's love and to be baptized if they so desire.

The Fall 2018 and Spring 2019 Student Financial Aid have been paid. Please keep all of our synodical students in your prayers.

Thank you to all the Gospel Outreach Committee members:

**STUDENT FINANCIAL AID**  
 Lisa Brack and Mary Dohl

**GGGF AND MISSION GRANTS**  
 Maria Keil and Jolene Stackhouse

**PASTORAL COUNSELOR**  
 Rev. Dr. Rocco Mallardi

## 2018-2020 MISSION GRANTS AND STUDENT FINANCIAL AID LWML Kansas District



- PD 1. Orphan Grain Train, Wichita, KS: \$5,000
- PD 2. Concordia Seminary Food Bank, St. Louis, MO: \$5,000
- PD 3. Lutheran Braille Workers, Kansas: \$6,000
- PD 4. Ascension Lutheran Church, Pratt, KS: \$5,000
- PD 5. LCMS Ministry to the Armed Forces, St. Louis, MO: \$4,000
- PD 6. Lutheran Student Center at Wichita State University: \$5,000
- 7. Capstone Ministries, Kisumu, Kenya: \$4,000
- 8. Lutheran Indian Ministries, Haskell LIGHT Campus Ministry: \$5,000
- 9. Lutheran Heritage Foundation, Macomb, MI: \$4,000

## FINANCIAL NEWS

Ella Schempp  
Financial Secretary  
12601 W. 60th St.  
Shawnee, KS 66216

[financialsecretary@kansaslwml.org](mailto:financialsecretary@kansaslwml.org)



### *From the Desk of the Financial Secretary*

*Ella Schempp*

**Mite Offering Update:** As of June 30, 2019, we have received **\$84,782.50**. At the 2018 convention, we increased our Mission Grant dollar amount for the 2018-2020 biennium, and we are on track to meet that Mission Goal. For a quick reference, we had received \$81,996.99 by June 30, 2017. ***We are blessed!***

**God's Gracious Gift Fund Update:** We have received \$2,200.00 from Thrivent Choice and \$7,517.47 from memorials and honorariums, and those amounts added to the previous balance totals \$13,393.00 that will be disbursed by vote of the delegates at the 2020 convention. ***Thank you for your faithfulness!***

The Executive Committee approved changes to the Remittance Vouchers in June 2018. I want to encourage you to recycle any old forms that you have and start using the new form. Why is this important?

1. The old forms have the wrong payee and some banks are not willing to accept a check that the payee is different than how the account is named.
2. If you do not have access to the LWML website or email let me know and I will provide you a copy. Copies will also be available at the Kansas Assembly of Leaders in August.
3. Remittance Vouchers are online, with the following instructions:
  - **Two forms are printed on one page.**
  - **Print a copy from the website address listed below.**
    - <http://www.kansaslwml.org/organizational-resources.html>
  - **Complete the voucher leaving the date and money amounts blank.**
  - **Make copies of the completed form. This will save you time when you send in your next remittances to the Financial Secretary.**
  - **Send one half of the page with your remittance and keep the other half for your records.**
  - **The Payee on the check should read "LWML Kansas District".**

Questions? Contact [financialsecretary@kansaslwml.org](mailto:financialsecretary@kansaslwml.org)

The LWML Kansas District Executive Committee is happy to announce the God's Gracious Gift Fund (GGGF) amount to be disbursed, by vote of the delegates at the 2020 Convention, is \$13,393.00. Thank you for the faithful giving of mites and offerings. Praise God from whom ALL blessings flow!





# Grant Applications

The Gospel Outreach Committee is accepting Mission Grant and God's Gracious Gift Fund applications. The deadline to submit an application is **September 1, 2019**. Please consider submitting an application to fund a project in your church, zone, or other mission-minded organization.

The application can be submitted three ways and can be found at:  
<http://www.kansaslwml.org/organizational-resources.html>

- you may download, print, complete, and mail to the address on the form
- you may download, print, complete, scan and email the attachment to [grants@kansaslwml.org](mailto:grants@kansaslwml.org)
- you may complete the form online and click on Submit Application, which will be electronically sent to the committee

You will receive confirmation in three days after receipt of the application. If you don't receive a confirmation, please contact the committee.

**NOTE:** if you have previously submitted an application in the last couple of months and have NOT received a confirmation of receipt, please send a note to [grants@kansaslwml.org](mailto:grants@kansaslwml.org) and they will contact you.

When you submit an application, please keep a copy for your records. Grants to be funded will be selected at the 2020 convention in Topeka. Thank you!

LWML Kansas District Gospel Outreach Committee

Concordia Publishing House has partnered with Lutheran Women's Missionary League to bring you an updated shopping experience while still providing the full range of LWML products and resources.



National LWML has a National LWML Pinterest page. Check out the great resources!



Kansas LWML is on Facebook! Be sure to "like" our page. You can also follow the National LWML on their Facebook page too! Join today.





Date received \_\_\_\_\_  
(For committee use only)

## LWML KANSAS DISTRICT GRANT APPLICATION

Please select one of the following:

☐ **District Mission Grant**

(These grants are selected by convention delegates and paid during the biennium. These are a larger grant amount, which are paid from mite offerings received during the biennium.)

☐ **God's Gracious Gift Fund**

(These grants are selected by convention delegates and paid immediately after convention, and are a smaller grant amount. The total amount available will be announced on the website after 6-1-19.)

☐ **Either Grant**

(The Gospel Outreach Committee will select the grant which best fits the application request.)

**APPLICATION DEADLINE IS SEPTEMBER 1, 2019**

\_\_\_\_\_ of \_\_\_\_\_  
(SOCIETY / INDIVIDUAL) (CONGREGATION / CITY)

is submitting the following project for consideration at the 2020 LWML Kansas District Convention.

The proposed project is for \_\_\_\_\_  
(ORGANIZATION)

in \_\_\_\_\_  
(CITY / STATE / COUNTRY)

Recipient contact information:

\_\_\_\_\_ (NAME)

\_\_\_\_\_ (STREET ADDRESS OR P.O. BOX) \_\_\_\_\_ (CITY / STATE / ZIP CODE)

\_\_\_\_\_ (PHONE NUMBER) \_\_\_\_\_ (EMAIL ADDRESS)

The recipient must be affiliated with one of the following. Please check the one that applies to this request.

☐ LWML    ☐ LCMS District    ☐ LCMS    ☐ Recognized Service Organization (RSO) of LCMS

The money is needed for \_\_\_\_\_  
(Be as specific as possible. Attach additional sheet if necessary.)

\_\_\_\_\_  
\_\_\_\_\_



Amount requested \$ \_\_\_\_\_

Is the need current? ☐ Yes ☐ No

When would the money be needed? *(Keep in mind this proposed project must be viable during the 2020-2022 biennium)*

Has the project had other funding sources? ☐ Yes ☐ No *(If yes, list other funding sources and amounts.)*

How does this project share the Gospel with those who haven't before heard or believed it?

Why do you think this would be a good project for the LWML Kansas District?

This application is submitted by:

Name \_\_\_\_\_

Address \_\_\_\_\_

Phone \_\_\_\_\_ Email \_\_\_\_\_

Return to: Janice Cundiff, VP of Gospel Outreach  
103 S. Rodehaver Ave.  
Oberlin, KS 67749  
785-475-3695  
grants@kansaslwml.org

Visit the LWML Kansas District  
website, Gospel Outreach page,  
to learn more about the grants  
currently being funded.  
[www.kansaslwml.org](http://www.kansaslwml.org)

**Note:** 1. If emailing this grant application or if using the electronic online form, you will receive an acknowledgement of receipt of the application, but if not received within three days, please contact the VP of Gospel Outreach at the address above. 2. If the grant application is mailed through the postal service, you will also receive an acknowledgement of receipt, but if not received within ten days, please contact the VP of Gospel Outreach at the address above.

**APPLICATION DEADLINE IS SEPTEMBER 1, 2019**

## Student Financial Aid

The school year has ended for many of our students studying to be church workers. Applications for Financial Aid for the 2019-2020 year have been processed and are ready to be paid in August. Being the financial aid chair this past year has given me a little bit of insight into the lives of these young people studying to become full time church workers, and I know our Church is fortunate and blessed to have these people making this commitment to serve.

Mika Patron, a deaconess who graduated this year, wrote the following: "I am very grateful for your prayers and your financial support of my deaconess studies. Our Lord is good. He knows what we need and provides us with everything that is for our good. (Luke 12:22-34; Romans 8:28) Thanks be to God! "

Natasha Bonine wrote "I'm so excited to become part of the Church Educators who teach students about our Lutheran faith."

Raymond Dubrava writes: "I give thanks to God everyday for how he has blessed me through your generous gifts. It has been a great blessing for allowing me to continue my seminary education in this my fourth and final year."

Thank you to the KS District LWML for their mites and prayers, and God bless all of our students studying to become full time church workers!

Lisa Brack, Student Financial Aid Chairman



## Lutheran World Relief

Kansas District Lutheran World Relief pickups this fall:

**WICHITA – Tues, Oct. 8** - Risen Savior Lutheran Church, 6770 E 34<sup>th</sup> St. No, 67226

**HAYS – Wed., Oct. 9** - Trinity Lutheran – 2703 Fort St., 67601

**SALINA – Thurs., Oct. 10** - Trinity Lutheran – 702 S Ninth St., 67401

**TOPEKA – Fri., Oct. 11** - Christ Lutheran – 3509 SW Burlingame, 66614

Besides mission quilts Lutheran World Relief also collects:

- fleece tied blankets,
- school kits,
- personal care kits,
- fabric kits, and
- baby care kits



For more information on how to collect for any of these worthy projects, go to the Lutheran World Relief website: [www.lwr.org](http://www.lwr.org). Click on 'Get Involved' – then 'Quilts & Kits'. The requirements for each kit is listed under its own heading.

***LWR has made a plea in their summer newsletter for School Kits. Can you or your church make this a special project before October?***

See you at the drop-off locations in October.

Karen Morrison, LWR KS District Coordinator



## SOCIETY NEWS



St. Luke's Manhattan LWML Society hosted a Cupcakes 'N Canvas event March 23, 2019. Crystal Miller (Omaha NE) lead the painting event helping us keep focus on what really matters.

## ZONE NEWS

The LWML NE Zone held their Spring Fling on April 13, 2019 at Zion Lutheran Church in Hiawatha, Kansas. Our theme was centered on Faith. Pastor Sean Kilgo gave a devotion on Faith. Our speaker, Chyleen Pauesick, KC Crossroads Zone President, gave a presentation entitled "My Faith and My Quilts. One quote we took from Chyleen was "Jesus is the needle; I am the thread where he goes I will follow." Over 30 ladies enjoyed seeing Chyleen's quilts.

Pastor Kilgo installed three officers, Cindy Manche, Zone President, Martha Pearson, VP Christian Life, and Karen Bauman, Zone Secretary.

Zion Lutheran Church LWML ladies provided a salad luncheon for all.

Our ingathering went to Kaden's Kloset, an organization that supplies personal items to children in foster care. We collected 101 shampoo/conditioner big and small bottles, 63 bars of soap, 45 bottles of body lotion, 5 body sponges, 2 brushes, 31 deodorant, 73 toothbrushes, 4 mouthwash, 36 toothpaste, 59 combs, 34 body was, 2 hand soap, 1 box of tampons, 4 baby wipes, 1 dish wash soap, 2 bottles of cleaner, and 2 microfiber scrubbers. We also collected 687 diapers and 3 containers of wipes for a family who had triplets.

Submitted by Cindy Manche, LWML NE Zone President



Chyleen Pauesick, Speaker

**Q: How do I contribute to the Kansas District of the LWML?**

**A: There are four designated funds to receive your gift:**

- **God's Gracious Gift Fund (GGGF)** comes from individuals or local groups for memorials or honorariums. These funds are disbursed to mission organizations, schools or other special grants based on the vote of the delegates at each convention.
- **District Mission Grants** are selected by the voting delegates at each convention and are paid as mite offerings and other donations are received.
- **Student Financial Aid (SFA)** is paid for applicants who meet the requirements of attending the Concordia Universities or seminaries and being enrolled in church work programs of study.
- **Leader Development** comes from multiple sources and is used to help finance Zone Delegates to National Conventions. It is also used to fund resources or training that can support the Zones and/or local groups as Lutheran Women in Mission.

*For memorials or honorariums, give this card to the family or individual:*

<p style="text-align: center;"><b>To God's Glory</b></p> <p style="text-align: center;">[ ] A gift in loving memory of      -OR-      [ ] A gift in honor of</p> <hr/> <p style="text-align: center;">(Name)</p> <p style="text-align: center;">has been made to the</p> <p style="text-align: center;">Lutheran Women's Missionary League Kansas District</p> <p style="text-align: center;">[ ] God's Gracious Gift Fund [ ] District Mission Grants [ ] Student Financial Aid [ ] Leader Development</p> <p>By _____</p> <p>Address _____</p>
--

*Mail your donation along with this form to the Financial Secretary of the LWML Kansas District.*

*(Her address can be found in the "Contact Us" section of the website.)*

[www.kansaslwml.org](http://www.kansaslwml.org)

*Make check payable to the LWML Kansas District.*

*Your canceled check is your receipt.*

<p style="text-align: center;"><b>To God's Glory</b></p> <p style="text-align: center;">Enclosed is a gift of \$_____ to the LWML Kansas District</p> <p style="text-align: center;">[ ] In loving memory of      -OR-      [ ] In honor of</p> <p>Name _____</p> <p>This contribution is to be used for the LWML Kansas District (please mark one)</p> <p style="text-align: center;">[ ] God's Gracious Gift Fund [ ] District Mission Grants [ ] Student Financial Aid [ ] Leader Development</p> <p>Given by _____</p> <p>Address _____</p>
---

**THANK YOU FOR YOUR GIFT!**

# **LWML KANSAS DISTRICT REMITTANCE VOUCHER**

DATE \_\_\_\_\_

CONGREGATION \_\_\_\_\_  
 CONGREGATION CITY \_\_\_\_\_  
 GROUP/ZONE \_\_\_\_\_  
 GROUP/ZONE TREASURER \_\_\_\_\_  
 ADDRESS \_\_\_\_\_  
 CITY/STATE/ZIP \_\_\_\_\_  
 PHONE# \_\_\_\_\_  
 EMAIL \_\_\_\_\_

If your donation is in memory of or in honor of, list name:

\_\_\_\_\_  
 \_\_\_\_\_

[ ] Send Mite Boxes (available at no cost): qty. \_\_\_\_\_

DAY OF PRAYER	\$
DISTRICT MISSION GRANTS	\$
GOD'S GRACIOUS GIFT FUND	\$
LEADER DEVELOPMENT	\$
MITE OFFERINGS	\$
STUDENT FINANCIAL AID	\$
MISCELLANEOUS MONIES	\$
	\$
<b>TOTAL REMITTANCE</b>	<b>\$</b>

Please fill out **only ONE CHECK** and **ONE VOUCHER** for all enclosed remittances.

MAKE CHECK PAYABLE TO: **LWML KANSAS DISTRICT**

MAIL **CHECK AND VOUCHER** TO:  
**LWML KANSAS DISTRICT FINANCIAL SECRETARY**

Please copy completed form for your records.

(Updated July 2019)

# **LWML KANSAS DISTRICT REMITTANCE VOUCHER**

DATE \_\_\_\_\_

CONGREGATION \_\_\_\_\_  
 CONGREGATION CITY \_\_\_\_\_  
 GROUP/ZONE \_\_\_\_\_  
 GROUP/ZONE TREASURER \_\_\_\_\_  
 ADDRESS \_\_\_\_\_  
 CITY/STATE/ZIP \_\_\_\_\_  
 PHONE# \_\_\_\_\_  
 EMAIL \_\_\_\_\_

If your donation is in memory of or in honor of, list name:

\_\_\_\_\_  
 \_\_\_\_\_

[ ] Send Mite Boxes (available at no cost): qty. \_\_\_\_\_

DAY OF PRAYER	\$
DISTRICT MISSION GRANTS	\$
GOD'S GRACIOUS GIFT FUND	\$
LEADER DEVELOPMENT	\$
MITE OFFERINGS	\$
STUDENT FINANCIAL AID	\$
MISCELLANEOUS MONIES	\$
	\$
<b>TOTAL REMITTANCE</b>	<b>\$</b>

Please fill out **only ONE CHECK** and **ONE VOUCHER** for all enclosed remittances.

MAKE CHECK PAYABLE TO: **LWML KANSAS DISTRICT**

MAIL **CHECK AND VOUCHER** TO:  
**LWML KANSAS DISTRICT FINANCIAL SECRETARY**

Please copy completed form for your records.

(Updated July 2019)





Enjoy a relaxing weekend of connecting with old friends and meeting new ones.

### ENJOY MUSIC

### MEDITATE IN GOD'S WORD

### LIGHTEN YOUR SPIRIT WITH LAUGHTER

### WIN PRIZES

The LWML Kansas District Store will have items available for your shopping enjoyment.

Salina Ambassador Hotel  
1616 W Crawford St.  
Salina, KS



*You are altogether, beautiful, my love,  
there is no flaw in you (Song of Songs 4:7).*  
**Fearless Women, Redefining Beauty Boldly**

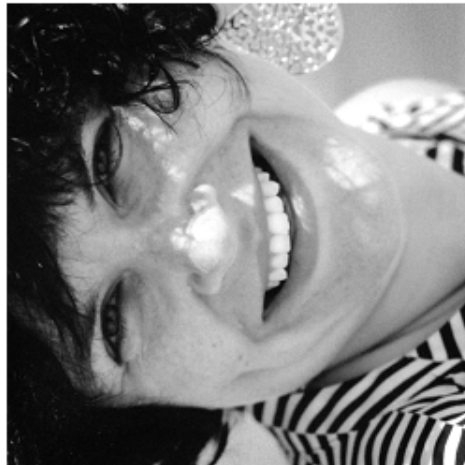
Please join us  
at the  
Lutheran Women  
in Mission  
Christian Life Retreat

**"Fearless Women,  
Redefining Beauty Boldly"**

November 1 - 2, 2019  
Salina, Kansas

Sponsored by the  
LWML Kansas District





### Guest speaker: Heidi Goehmann:

Heidi Goehmann is a licensed clinical social worker and mental health care provider, deaconess, writer, speaker, wife, mom, and advocate. She received her bachelor's degree in theology and psychology from Concordia University Chicago, and her master's degree in social work from the University of Toledo with an emphasis on children, families, and social justice.

Heidi has worked in a variety of clinical settings including trauma treatment, play-based therapies, and systems research. She is a certified Eye Movement Desensitization and Reprocessing therapist, and has training in the Gottman method of couples' therapy. She has also served in various ministry capacities including youth and young adult ministry, women's ministry, and family ministry.

Heidi can always be found at [ilovemyshepherd.com](mailto:ilovemyshepherd.com) which provides resources and advocacy for mental health and genuine relationship.

Heidi loves her family, sticky notes, Jesus, adventures, Star Wars, Star Trek, and new ideas... not necessarily in that order.

*You are altogether, beautiful, my love, there is no flaw in you (Song of Songs 4:7).*

**Fearless Women, Redefining Beauty Boldly**

## AGENDA

### FRIDAY ~ November 1

— *Dinner on your own before the event starts* —

5:00 p.m. Registration Opens, check into rooms / Shopping Open until 6:30 p.m.

6:30 p.m. Welcome / Session I

8:00 p.m. Vespers Service

8:45 p.m. Fellowship: After Hours Fun and Games!

### SATURDAY ~ November 2

Early Meditations/ Walkers

7:15 a.m. Registration Opens

7:30-8:30 a.m. Breakfast provided  
Shopping Open until 9:00 a.m.

9:00 a.m. Welcome / Session II

11:15 a.m. Break / Shopping Open until 12:30 p.m.

11:30 a.m. Lunch Served

12:30 p.m. Session III

2:30 p.m. Closing Thoughts



**Lutheran  
Women  
in Mission**

Please reserve my spot!  
**"Fearless Women,  
Redefining Beauty Boldly"**

Name: \_\_\_\_\_  
Address: \_\_\_\_\_  
City: \_\_\_\_\_ Zip: \_\_\_\_\_  
Phone: \_\_\_\_\_  
Email: \_\_\_\_\_  
Special Needs: \_\_\_\_\_

**EARLY REGISTRATION DEADLINE  
SEPTEMBER 28, 2019**

### REGISTRATION:

(PLEASE CHECK YOUR CHOICES AND ENCLOSE AMOUNT ACCORDINGLY)  
Hotel Room, Meals & Activities for One Great Price!

*Rooms are Double—Double Beds*

- ? 1 person/room \$99.00
- ? 2 persons/room \$74.00 per person
- ? 3 persons/room \$65.00 per person
- ? 4 persons/room \$61.00 per person
- ? I plan to attend the retreat, but will not stay at the hotel. Registration cost: \$48.00

- **PLEASE ADD \$10 if postmarked AFTER September 28, 2019.**

I have a roommate/s: \_\_\_\_\_

\_\_\_\_\_ The Committee may assign me a roommate.

**Make checks payable to LWML Kansas District.**  
Please send registration form with payment to:

**Tiffany Harkins**

**706 N Walnut St., Olathe, KS 66061**



**We have a great logo, now we need a...BANNER!**

**WANTED – A BANNER DESIGN for the 2020 CONVENTION!**

**Please submit your Banner Design to:**

**President Brenda Piester**

**29063 64<sup>th</sup> Rd.**

**Coats, KS 67028**

**or email to [president@kansaslwml.org](mailto:president@kansaslwml.org)**

**Due September 1, 2019**

~~~~~  
**LUTHERAN WOMEN'S MISSIONARY LEAGUE KANSAS DISTRICT**  
**Invites you to the 38<sup>th</sup> Biennial Convention**

**Friday, April 17 – Sunday, April 19, 2020**

**Capitol Plaza Hotel and Convention Center | Topeka, Kansas**

**BE THOU MY VISION**



**“LET US FIX OUR EYES ON JESUS...” HEBREWS 12:2**  
**LWML KANSAS DISTRICT 2020**

**Theme Verse:**

*...looking to Jesus the pioneer and perfecter of our faith,  
who for the sake of the joy that was set before him endured the cross,  
disregarding its shame, and has taken his seat at the right hand  
of the throne of God (Hebrews 12:2 NRSV).*

**Convention Goal Statement:**

As we focus on Jesus with 2020 vision, we will

- see the Author of our faith more clearly
- open our eyes to the joy of enduring crosses daily, and
- share with others the vision of the glory of God.



**[www.kansaslwml.org](http://www.kansaslwml.org)**