



# The Kansas Sunshine

Volume 73: Number 5

FALL 2016

LUTHERAN WOMEN'S MISSIONARY LEAGUE KANSAS DISTRICT

## The President's Podium

**Brenda Piester**

21st LWML Kansas District President



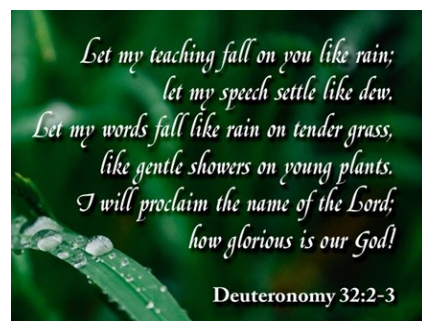
*"For we are His workmanship, created in Christ Jesus for good works, which God prepared beforehand, that we should walk in them."  
Ephesians 2:10*

### New Growth + Water = New Seeds and Fruit

Greetings, LWML Sisters-in-Christ!

I pray for you as you are settling into your fall schedules. For many of you, it involves new school classes (Pre-K through graduate school), your children (and grand and great-grandchildren!) and their sports and games, music programs, starting fall Sunday School and Midweek, digging into His Word in fall Bible Study, and serving—quilting, making meals, packing relief kits, and helping others in a myriad of ways. For me, it is back into setting the alarm on school days, teaching a new midweek program in the Pratt community, and attending LWML meetings and events. Blessings on the labors of your hands!

Here on the ranch, we have been blessed with amazing rains this August. Our creek overflowed—the first time in several years. We are thankful for every drop! *How glorious is our God!* (Deut. 32: 2-3) We anxiously await the coming weeks of growth for the grass, as we know that all of the plant's energy will now be put into producing seed.



What can we learn here that applies to LWML? We can *water for new growth* in our Sisters-in-Christ through Bible Study in our meetings or in a lunch-hour or Saturday morning small group study. We can *water for new growth* in family and friends through including a Mustard Seed with a get-well, sympathy or birthday card. We can *water for new growth* in members of our community by leaving a Master's Card with our tip at the restaurant. We can *water for new growth* in the next generation through teaching of His Love through Bible stories read to the little ones snuggled on our lap or through our teaching in organized lessons and groups. We can *water for new growth* in people all around the world by demonstrating care and compassion through mission organizations.

What happens when plants are watered and growth happens? FRUIT! SEEDS! These seeds do not happen because the plants were watered. Seeds only happen from God. (1 Corinthians 3:7) Fruit is produced by the Holy Spirit! (Galatians 5:22-23) What a miracle! What a blessing! What an indescribable gift!

In August, I received a heartfelt email from a society president. She had some suggestions for the LWML in Kansas, and I deeply value her ideas. The LWML Kansas District Executive Committee met in September to further discuss ways that we can help zones and societies. We are working to share resources with you to use in your service and leadership. Please contact us with your questions, concerns or ideas! We support you and pray for you. We strive to strengthen your leadership skills in your societies and zones so that you are enabled to *water for new growth* in the Kansas LWML... "For Such a Time as This."



Deep Rooted, and watching for opportunities to *water for new growth*,  
In His Grace, President Brenda • [president@kansaslwml.org](mailto:president@kansaslwml.org)

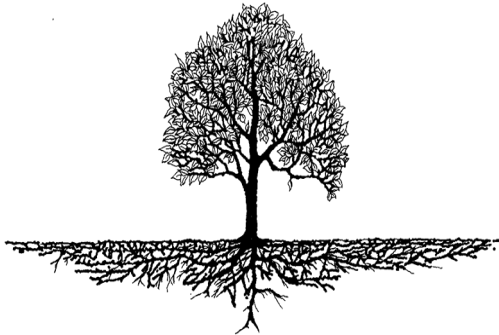
# Counselor's Corner

Rev. Robert Grimm  
Junior Pastoral Counselor



*"What Good is a Tree?"*

The article "What Good Is A Tree?" in a past issue of Reader's Digest explained that when the roots of trees touch, there is a substance present that reduces competition from other trees. In fact, this unknown fungus helps link roots of different trees, even of different species, so that a whole forest may be linked together. If one tree has access to water, another to nutrients, and a third to sunlight, these trees have the means to share some of their bounty with the others.



God made nature in amazing ways, but this picture is truly a picture of what He wants his church to be: He wants for it to share resources so that people in churches may share with one another and support one another. These words of Scripture from Romans twelve offer great encouragement for us to live with one another in mutual support:

"For by the grace given me I say to every one of you: Do not think of yourself more highly than you ought, but rather think of yourself with sober judgment, in accordance with the measure of faith God has given you. Just as each of

us has one body with many members, and these members do not all have the same function, so in Christ we who are many form one body, and each member belongs to all the others. We have different gifts, according to the grace given us. If a man's gift is prophesying, let him use it in proportion to his faith. If it is serving, let him serve; if it is teaching, let him teach; if it is encouraging, let him encourage; if it is contributing to the needs of others, let him give generously; if it is leadership, let him govern diligently; if it is showing mercy, let him do it cheerfully.

"Love must be sincere. Hate what is evil; cling to what is good. Be devoted to one another in brotherly love. Honor one another above yourselves. Never be lacking in zeal, but keep your spiritual fervor, serving the Lord. Be joyful in hope, patient in affliction, faithful in prayer. Share with God's people who are in need. Practice hospitality. Bless those who persecute you; bless and do not curse. Rejoice with those who rejoice; mourn with those who mourn. Live in harmony with one another. Do not be proud, but be willing to associate with people of low position. Do not be conceited. Do not repay anyone evil for evil. Be careful to do what is right in the eyes of everybody."

What we do in the LWML, and in our Lutheran Churches, supports and builds the people God calls to His kingdom, protecting our roots and bearing fruit in His name.



*A time to celebrate!*  
**LWML TURNS 75 IN 2017**

Come to our Diamond Dazzle Celebration at the 37th Biennial Convention | June 22-25, 2017 | Albuquerque, New Mexico

## COMMUNICATION

Shelly Keller, VP of Communication  
[communication@kansaslwml.org](mailto:communication@kansaslwml.org)



As we approach the fall season, my favorite time of the year, we have so much to be thankful for...the rains that the Lord has showered upon us filling the ponds and lakes, the green pastures for the livestock and farm animals, the beautiful crops soon to be harvested, the fall colors in the trees, and the cooler weather. God sends us His blessings each and every day...remember to thank Him through your prayers and actions. And keep the LWML in your prayers as well...we have a lot of work to do in His kingdom. Pray for our mites, pray for our projects, pray for our leaders, pray for our sisters in Christ, and most of all, thank God for His leadership and guidance for the last 75 years of the LWML. There are a lot of exciting things yet to happen in the LWML.

As the Vice President of Communication, I have the privilege to work with several fun and talented committee members. I especially want to thank Mark Fuchs, our Webmaster, who has spent many hours working on the new website design. Have you visited the website and noticed the changes and reorganization? If not, you need to take a look. Everything you need is just a click away! And while you are visiting the website, you can sign up to receive the periodic email blasts, which announce when the newsletter is available, payments of mission projects, and other important LWML Kansas District announcements. If you've already subscribed, you can always update your preferences too. Click on the newsletter tab at the top, then click on the box towards the bottom of the page to "Sign Up or Update Preferences", fill in the spaces, and follow the instructions to confirm your subscription. It's that easy. I thank you in advance for signing up!

Marj Aufdemberge, who serves as committee chairman, is the Distribution Manager. Please see her article in this newsletter issue regarding the payment of your *Lutheran Woman's Quarterly* subscriptions and the Website \$6.00 yearly maintenance fee. I encourage **every** society to stay current with your subscription payments and to send in your payments promptly. The payment form can be found in this issue and on the website, with a payment deadline of March 1, 2017.

I am pleased to announce that Michelle Domsch of Pratt will begin serving as the newsletter editor beginning with the Winter issue of *The Kansas Sonshine*. Please send your news articles and pictures of your society and zone events for the newsletter issues to her promptly. The next issue deadline will be December 5.

Darla Abbott is the Social Media Manager. She manages the Kansas LWML Facebook page, and she would like to post your news regarding your society and zone events. Check out our Facebook page, KS LWML, and don't forget to "Like" us! So far, we have 297 "likes" from people who have visited our Facebook page; let's raise that number together.

Kathie Thurman serves as the LWML Store Manager. She has recently helped President Brenda and myself assemble the "Church Workers in Mission" gift bags, a project to welcome new pastors and church workers to the LCMS Kansas District. Please visit the CPH website to search for and order LWML products. Kathie will be ordering items for the LWML Store for several district events in 2017.

Shawna Spiehs serves as the Technology and Directory Manager, and she has been busy updating the Kansas District Personnel Directory. Please email Shawna with any new names, addresses, email addresses, and other contact information, so the Kansas District directory will always be up-to-date. This document will not be published on the website to protect the privacy of our LWML leaders and members. If you need information from the directory, please contact Shawna.

Sara Deepe will continue as a committee member assisting with other duties of the committee. If there is anything that the Communication Committee can do to help you or to answer any question you may have, please contact us. Our contact information can be found on the Contact Us tab on the website. We are here for you! And don't forget to check the website calendar for all the upcoming events in Kansas.

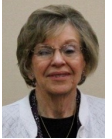
Serve the Lord with gladness! *Shelly*

### Are you getting the news?

Please make sure all of your LWML members are signed up to receive the email news at <http://www.kansaslwml.org/newsletter.html>. Even if you signed up in the past, please go there and update your preferences, **ESPECIALLY** if you have changed your email address! We want to make sure you get all of the LWML news, notices, and updates!

## ORGANIZATIONAL RESOURCES

Gloria Raab, VP of Organizational Resources  
resources@kansaslwml.org



LWML officers, committees and members have some exciting resources available, which are as easily accessible as the click of a computer button to open one of the Web pages.

Have you looked at the newly designed Kansas website, [www.kansaslwml.org](http://www.kansaslwml.org)? Recent copies of *The Kansas Sonshine*, (the district newsletter), plus easy-to-understand directions for subscribing and having the newsletter delivered directly to your computer in-box, are on the home page. If some of your members don't have access to a computer, ask a member of your society to print and make copies available so everyone has the latest news.

A video gallery of the 2016 district convention, "For Such a Time As This," is on the Convention and Events page. Look carefully—your picture or that of one of your friends may have captured you actively participating in some of the convention activities. This video can easily be shown at one of your meetings to bring the convention to people who weren't able to attend.

Each committee has a page with information about its area of LWML service. Do you need directions for assembling LWR kits or saving stamps for missions? Look under Caring Service. Want to download a poster of the 2016-18 mission projects so everyone knows when projects have been paid? That poster is on the Gospel Outreach page.

The new Kansas LWML tri-fold brochure highlights mite offerings and the history of the mite box, and lists officers and committee members. This brochure would be an excellent hand-out for LWML Sunday or to encourage women to become active LWML members.

Have you been asked to open a meeting with a devotion or lead a Bible study? The national LWML website, [www.LWML.org](http://www.LWML.org), is a wonderful resource for these types of materials, and many of them are free downloads. Mustard Seeds daily devotions and many other resources, such as 2 Minute Tuesdays, eNews, and Shop LWML Specials can be received by email. An easy-to-use subscription form is on the "About Us" page.

How do mite offerings make an impact? Videos and pictures of the 2015-17 mission grants adopted at the national convention in Des Moines can be found on the Missions page.

LWML will celebrate its 75<sup>th</sup> anniversary in 2017. Several banners that can be downloaded and printed in a newsletter or posted on a bulletin board are on the News and Events page. You are invited to post your own recollections and dreams for LWML on this page also.

Don't want to wait for the next district retreat or the LWML convention in Albuquerque to shop the LWML store? The catalog is digital and on-line. Do you have one of the LWML spatulas or the LWML kitchen towel? Would you like to wear the new LWML polo shirt or add to your LWML jewelry with earrings sporting an LWML charm? Look under "Shop," for an order form or phone number to place your order.

These are highlights of some of the exciting and useful resources available on the Kansas and national LWML websites. Save the sites as "Favorites" and visit them regularly. The information contained in them can only enhance our membership in LWML, and enable us to joyfully "Serve the Lord with Gladness."

*Blessings in Christ...Gloria*

### 2016-2018 LWML Kansas District Focus Areas

#### Nurturing Faith in Christ

We are committed to helping every woman find personal opportunities in her daily life and in her congregation to be nurtured in faith in Jesus Christ and empowered by the Holy Spirit to discover her unique gifts and value in God's family.

#### Making our Mission Meaningful

We challenge and equip women of all ages, stages, ethnicities, and experiences to make meaningful differences in the lives of hurting, helpless, and unbelieving people at home and throughout the world.

#### Sharing Encouragement

We believe that women value the friendship, support, and encouragement from other women and strive to offer warm, welcoming opportunities for women to grow in faith and relationships as sisters in Christ.



## GOSPEL OUTREACH

Bernie Reetz, VP of Gospel Outreach  
outreach@kansaslwml.org



Praise God for all of our blessings! Twenty seven students received financial aid for the 2016 Fall Semester, in the amount of \$12,050. All of the students attend LCMS colleges and seminaries. May God bless each student throughout the semester and keep the students faith as they study.

Mission Projects 1, 2, and 3 have been paid with LWML Mite offerings. Serve the Lord with Gladness.

The Gospel Outreach Committee encourages all LWML ladies to keep in prayer all of our Synodical students and all the Mission Goals selected, as we gather our mites in praising the Lord in gladness.

The GO Committee is working hard to get all of their activities up and running. Thank you to Pam Popp, first chair for Mission Projects, and her assistant Lisa Brack, and to Kris Koops, first chair for Student Financial Aid, and her assistant Maria Keil.

## SPECIAL FOCUS MINISTRIES

Ann Harms, chairman  
Special Focus Ministries Committee



Now that the 2017 LWML National Convention in Albuquerque is less than a year away, it's time to start thinking about the Young Woman Representatives (YWRs) that the Kansas District will be sending! The Special Focus Ministries Committee will choose two YWRs and the district will pay for their registration, meal packages, transportation costs, and hotel room. This is an amazing opportunity for two young women to experience a national convention affordably and catch the excitement of the LWML and its mission! An applicant may already be involved in LWML, but she doesn't have to be. Any mature young woman in the LCMS between the ages of 22 and 35 may apply. Please pass the application on to any young woman you think would be interested! All applications **must be received by December 9th, 2016**. Please visit the LWML Kansas District website at [www.kansaslwml.org](http://www.kansaslwml.org) to download the YWR application form from the Special Focus Ministries page.

### LWML 37th Biennial Convention

**Date:** June 22-25, 2017

**Location:** Albuquerque, New Mexico

**Theme:** "Jesus Christ Above All"



**Scripture Verse:** *Therefore God has highly exalted Him and bestowed on Him the name that is above every name.* (Philippians 2:9)

**Convention Goal Statement:** Empowered by the Holy Spirit, through Word and Sacrament, I will proclaim Jesus Christ above all.

**Convention Objectives** -- Each convention attendee will be:

Encouraged through worship and Bible study.

Equipped to share His message of salvation.

Engaged in celebrating God's faithfulness while serving the Lord with gladness

## CARING SERVICE

Laura Hunter, VP of Caring Service  
caringservice@kansaslwml.org



LWML support was felt everywhere this year by the MOST (Mission Opportunities Short Term) Ministry Team 1630! Ella Schempp (Kansas District Financial Secretary) and I were blessed to join a MOST mission team of 8 that traveled this past summer to Guatemala from July 22 - 30. We flew into Guatemala City and then served at 2 locations while there:

- Three days in a rural Lutheran church in the village of Santiago Zamora. This church also has a Lead a Child (Children's Christian Concern Society) school.
- Three days at Cristo Rey Lutheran Church in Guatemala City.

Our small team of eight, with the assistance of the local churches, our hosts and translators, were able to serve 933 people and gave out 1,453 pairs of glasses. To God be the glory! But the journey to Guatemala started well before the trip in July, as God used the LWML in so many ways to support this mission!

LWML work began at the 2016 Kansas District LWML convention in Manhattan. 886 used eyeglasses were collected at the Ingathering and 522 MOST ministries witness bracelets were assembled during the Servant Events. Thanks to the Caring Service Committee for organizing and managing the Ingathering and Servant Event activities, and to all of the ladies who contributed glasses and made bracelets!

The 886 eyeglasses, plus more collected by Hope Lutheran/Shawnee (congregation sponsoring the team) for a total of 2,700 pairs of glasses, traveled by van to MOST Ministries headquarters in Ann Arbor, Michigan. Kansas District Caring Service Committee member Karen Rinne (Kansas City CrossRoads Zone) and her husband were traveling to Detroit for a wedding this summer and volunteered to drive the used glasses, saving LWML the expensive shipping costs!

The 522 witness bracelets were carried to Guatemala by our team along with the eyeglass clinic supplies and then distributed at the evangelism stations at the two eye clinics.

But the hand of God through the ladies of the LWML did not stop there! After arriving in Guatemala, we learned that two additional translators would be available for each clinic through a grant from LWML. This was an unexpected but important blessing! The translators play a critical role in the success of the clinic, allowing the team to serve more efficiently and effectively.

The following information on MOST Ministries eyeglass mission is taken from their website:

- Each year, MOST Ministries provides recycled eyeglasses to people living in the developing nations around the world. Generous individuals, churches and organizations across the U.S. collect and send used eyeglasses to MOST Ministries, where they are then sorted, tested and repackaged by volunteers for distribution by our short-term mission team members.
- The cost of a pair of glasses in many developing nations is equivalent to a year's salary. Without assistance from MOST Ministries, hundreds of thousands of people would go without the glasses they need to work, read or attend school. MOST Ministries often provides the only pair of eyeglasses a person will ever own.

Visit the MOST Ministries' website for more information on short term mission opportunities and how you, and your societies and zones can assist their work by starting a used eye glass collection, sewing eyeglass case covers, making witness bracelets, and much more.

Ella and I are available to travel to your society or zone events to share more information about the trip and the work of MOST Ministries. Our contact information can be found on the Kansas District website!



Ella and translator assisting two precious little clients



Laura celebrating first emptied box of eyeglasses



Ella made a new friend

## CARING SERVICE

Betty Amey, chairman  
Caring Service Committee



What a joy to work beside the Kansas ladies of the LWML as chairman of the Caring Service Committee. Our committee falls under Laura Hunter, the Vice-President of Caring Service who serves on the Executive Committee. I am learning the ropes of the job which is made easy by experienced committee members Janice Cundiff (Northwest Zone), Carol Nix (Wichita Zone), Gloria Peterson (KC CrossRoads Zone), and Karen Rinne (KC CrossRoads Zone).

All of our societies and zones are looking for meaningful service projects. Please send highlights and photos of your caring service projects to the district VP of Communication, and your information will be shared in the Sonshine newsletter, on the district Facebook page, and/or the website Caring Service page.

For information about Lutheran World Relief quilts and personal kits, go to [lwr.org](http://lwr.org). When packing boxes for LWR, remember to completely fill the boxes so they do not crush in shipping, and write on the outside of the box LWR, the weight, contents and number of kits or quilts in the box. Check the LWR website for the method of tracking your quilts, as they wrap people in Christ's love around the world.

Since we are celebrating 75 years as an organization, consider 75 quilts, kits, or items collected as a goal for this year's service projects.

## CHRISTIAN LIFE

Tiffany Harkins, chairman  
Christian Life Committee



The Christian Life Committee would like to invite you to **SAVE THE DATE** for the Christian Life Retreat, November 3-4, 2017. Yes, this is over a year away, but if you mark your calendar now, then you are more likely to be able to join us at the Best Western Holiday Manor in McPherson for this uplifting event! **We are pleased to welcome Eden Keefe, the current national VP of Christian Life, as our keynote speaker, and she will be thrilled to see many Kansas LWML faces again!** More details will be available after the first of the year. In the meantime, please feel free to reach out to the committee by emailing us at [christianlife@lwml.org](mailto:christianlife@lwml.org) if you need any assistance or recommendations to find devotions or Bible studies to use in your societies or zones.

Also, remember to pray for and support your pastor and keep him informed about LWML happenings so he can also support you and your work. Invite him to zone events, or simply give him a summary of the event. Ask him to help encourage mite collections in your congregation and also the use of daily Mustard Seed devotions. Anybody can sign up to receive the Mustard Seed devotions daily via email at <http://www.lwml.org/stayintouch>. Keep him informed of the current mission projects at both the district and national levels and ask him to lift up prayers of thanksgiving during service when payments have been made to the recipients! Finally, be sure he has access to *The Kansas Sonshine* newsletter so he, too, can be encouraged by the messages from our President and Pastoral Counselor, in addition to having all the news.

### BE SURE TO VISIT THE WEBSITE TO VIEW AND PRINT THESE NEW, UPDATED AND/OR REVISED DOCUMENTS

--- All of these can be found on the Organizational Resources page ---

- † Leadership Guidelines (under Zone and District Resources)
- † Young Woman Representative application form (under Applications) **Deadline is December 9!**
- † LWML Brochure (under General Resources)
- † Quarterly Payment Remittance form (under Financial Resources) **Deadline is March 1, 2017!**
- † Donation form (under Financial Resources)

## FINANCIAL NEWS



Ella Schempp  
LWML Kansas District Financial Secretary  
12601 W. 60th St.  
Shawnee, KS 66216  
[financialsecretary@kansaslwml.org](mailto:financialsecretary@kansaslwml.org)



The Lord is good and we are blessed! Thank you for your offerings! The Mite total has reached \$24,324.48!  
Praise the Lord!

Please visit the website for information on mites and projects on the Gospel Outreach page. All checks for Mites, Mission Projects, God's Gracious Gifts Fund, and Student Financial Aid are to be mailed to the District Financial Secretary. And now, a new form is available to you for use when sending a financial donation.

When sending in your donation, you may now designate your gift as a memorial or honorarium. Please read and follow the instructions on the form. You may find this new contribution form on the website at [www.kansaslwml.org](http://www.kansaslwml.org); click on Organizational Resources, then Financial Resources, and then select "Donate to LWML Kansas District", which is a printable form for your use. Use this form along with the Remittance Voucher when mailing your donations to the Financial Secretary.

You are also encouraged to direct your Thrivent Choice Dollars to the LWML Kansas District. Thanks to everyone for your contributions so far in this biennium.

### **ATTENTION: SOCIETY TREASURERS AND PRESIDENTS**

#### ***Lutheran Woman's Quarterly and Website Maintenance Fee***

### **Payments for 2017**

It is time to begin thinking about making your society payments for the *Lutheran Woman's Quarterly* and Website Maintenance Fee. These payments should be sent before March 1, 2017. The subscription rates for the *Lutheran Woman's Quarterly* remain the same: 1-9 copies are \$6.50 each and 10 or more copies are \$5.00 each. **Every society** should pay the website maintenance fee of \$6.00. This one-time, yearly fee helps to maintain the LWML Kansas District website and keep it up to date for your convenience.

**March 1, 2017**, is also the **deadline to make decreases** in the number of subscriptions of the *Lutheran Woman's Quarterly* your society wants to receive. **Increases** in the number of subscriptions your society receives may be made now or at any time during the year. Changes submitted by March 1, 2017, will take effect with the 2017 summer issue of the *Lutheran Woman's Quarterly*.

The *Lutheran Woman's Quarterly* and Website Maintenance Remittance Form (2017) is available in this issue of *The Kansas Sonshine*. **This form should be completed by every society treasurer.** All payments need to be sent to the LWML Kansas District Financial Secretary, Ella Schempp. Her name and address are on the remittance form. Your mailing should include the following: (1) your check, (2) the remittance form, and (3) an LWML Kansas District remittance voucher.

The remittance form is also available on the LWML Kansas District website at [www.kansaslwml.org](http://www.kansaslwml.org). To find the form, click on Organizational Resources; then click on Financial Resources. The form is titled *Lutheran Woman's Quarterly and Website Maintenance Remittance Form (2017)*.

Any other questions you have may be directed to Marj Aufdemberge, LWML Kansas District Distribution Manager, by email at [distribution@kansaslwml.org](mailto:distribution@kansaslwml.org) or by phone at 785-524-3981.



*Lutheran Woman's Quarterly* and Website Maintenance Fee Remittance Form (2017)

Complete this form and mail it with your payment by March 1, 2017.  
Send payment to the LWML Kansas District Financial Secretary (name and address below).  
Please include a LWML Kansas District remittance voucher with your payment.

SOCIETY INFORMATION:

Society Name \_\_\_\_\_ Name of Church/City \_\_\_\_\_

Address *Quarterly* is to be mailed to \_\_\_\_\_

Attention \_\_\_\_\_

Society Treasurer's Name \_\_\_\_\_

Treasurer's phone \_\_\_\_\_ Treasurer's email \_\_\_\_\_

REMITTANCE INFORMATION:

Number of *Quarterly* subscriptions requested # \_\_\_\_\_

Multiply by rate (1-9 copies, \$6.50 each; 10 or more copies, \$5.00 each) x \_\_\_\_\_

SUBTOTAL = \$ \_\_\_\_\_

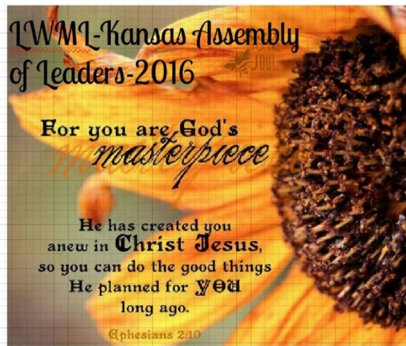
Add Yearly Website Maintenance Fee + \$ 6.00

**TOTAL REMITTANCE DUE** = \$ \_\_\_\_\_

Make checks payable to: LWML Kansas District

Mail (1) your check, (2) this form, and (3) a remittance voucher to: **Ella Schempp, Financial Secretary**  
12601 W. 60<sup>th</sup>, Shawnee, KS 66216

Marj Aufdemberge, LWML Kansas District Distribution Manager  
Contact information: [distribution@kansaslwml.org](mailto:distribution@kansaslwml.org) or 785-524-3981



For Such a Time as This...Leadership in Changing Times

## Kansas Assembly of Leaders – June 2016 “For Such a Time as This... Leadership in Changing Times”

LWML Kansas District Elected and Appointed Officers, District Pastoral Counselors, Appointed District Committee Members and Zone Presidents met in Hutchinson for leadership training and committee work in late June. Expanding upon the 2016 convention theme “For Such a Time as This...”, the specific focus of “Leadership in Changing Times” was added.

President Brenda opened the weekend with the June 22, 2016 devotion from Lutheran Church Charities “Dealing With Change-Part 1” based on the Prayer of Jabez in 1 Chronicles 4:10. <http://devotions.lccharities.org/2016/06/>



Music and singing were a big part of the KAOL event with Shelly Keller on the piano, Elaine Engelman directing and Pastor Grimm accompanying on his guitar.



Kansas LWML Counselors Bob Grimm and Jay Hobson led the “Christian Leaders Bible Study” in two different sessions of Bible reading, prayer, and discussion of how leadership applies to LWML. You can find this same study at <http://www.lwml.org/free-resources/2012/03/christian-leaders-bible-study>.



During this weekend, members were grouped with their committees—many of whom were meeting each other for the very first time. Zone Presidents and appointed officers also worked together to develop friendships, set goals, strengthen teamwork, and to pray for each other and the LWML.

These Lutheran Women in Mission completed a “Meet Your Kansas Leaders” mixer activity to meet Sisters-in-Christ and to foster new friendships.



Your Kansas District leadership team also knows how to have fun! The Gospel Outreach Committee planned a FUN and ACTIVE “Minute to Win It” mite challenge with over \$100 being raised to support the Kansas Mission Program.





Throughout this weekend, Kansas leaders were graced and blessed by the presence of national President Jan Wendorf (2007-2011) who also provided leadership training, guidance, encouragement and support by sharing her own LWML story and experiences in two sessions.



President Jan led the members in creating a visual “Time Management” reminder with a craft made from Kansas wheat and sunflowers. *(Thank you, Mary Schmidt, for donating the wheat!)*

In appreciation for her leadership, President Jan was presented with her own LWML “bling” shirt for WISCONSIN!

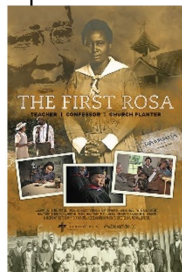


Participants closed Friday evening with a Prayer Walk developed by the Christian Life Committee.

President Brenda led a skit, *How (NOT!) to “Fill the Ballot”* (<https://goo.gl/5PH8YZ>), and EC members presented another skit, *We’re All Part of God’s Team* (<https://goo.gl/EJktEJ>).



Attendees watched and contemplated the movie, *The First Rosa*, and discussed ways it could be used in LWML and in the local congregation. <http://www.lcms.org/thefirstrosa>



Participants also donated a HUGE amount of diapers, formula and other baby supplies for the ingathering for the Open Door Pregnancy Care Center in Hutchinson. Thank you to the Caring Service Committee for planning this worthwhile project!

***SAVE THE DATE: The 2017 Kansas Assembly Of Leaders will be August 3-5, 2017. ALL KS DISTRICT BOD MEMBERS AND ALL SOCIETY PRESIDENTS are invited!***



## LUTHERAN WORLD RELIEF COLLECTIONS

2016 was a great year for Lutheran World Relief in Kansas. Thank you to every church and society that participated in making quilts and preparing kits. This is the report for each pick-up site:

- ◆ **Wichita:** 1,086 boxes with a weight of 21,125 lbs.; approximately 50 churches participated, including many from the Oklahoma District
- ◆ **Hays:** 11,067 lbs. (final box count and number of participating churches is unknown at this time)
- ◆ **Salina:** 597 boxes with a weight of 12,808 lbs.; 20 churches participated
- ◆ **Topeka:** 852 boxes with a weight of 16,677 lbs.; 38 churches participated
- ◆ \$1,400 was also collected in donations from several societies to help cover shipping costs at LWR

It is a pleasure to serve as the LWML Kansas District Lutheran World Relief Coordinator—**Karen Morrison**

### LUTHERAN VALLEY RETREAT

This past Labor Day weekend, members from Trinity Lutheran Church in Garden City went to the Lutheran Valley Retreat (LVR) in Woodland Park, CO, for the Great Rocky Mountain Weekend Escape. At dinner one night, Bernie Reetz, LWML Kansas District VP of Gospel Outreach, met



Stephenie

Stephenie Schualand, a wrangler at LVR. When she found out Bernie was a Kansas District LWML member, she was so pleased that she invited Bernie and Corrine Adams to drop by the corral, so she could show them what she purchased with the monetary gift from the LWML Kansas District God's Gracious Gift Fund (GGGF). At convention in April 2016, the LVR Horse Ministry was given \$500 to update tack supplies for the horses that are used for rides. While at LVR, Bernie and Corrine rode horses on a short trail ride led by Stephenie. It was an exciting experience for the ladies to meet Stephenie and see her enthusiasm and gratitude as a GGGF recipient.



Bernie



Corrine

### LWML welcomes new Pastors to the Kansas District

#### Lincoln Zone Fall Workshop / Trinity Lutheran, Hunter



Pastor Matt Schneider, Lincoln Zone Counselor; Beverly Wiese, Lincoln Zone President; Pastor Christopher Craig, Bethlehem, Sylvan Grove; Shelly Keller, LWML Kansas District VP of Communication; Coleen Ansell, LWML President, Bethlehem, Sylvan Grove

#### Northeast Zone Fall Workshop / First Lutheran, Sabetha



Pastor Michael Dunaway, NEK Lutheran Partnership; Martha Pearson, LWML President, First Lutheran, Sabetha; Pastor Sean Kilgo, NEK Lutheran Partnership; Elaine Engelman, LWML Kansas District VP of Christian Life; Kathy Heiniger, Northeast Zone President; Angela Williams, LWML President, Christ Lutheran, Wathena; Pastor Cory Norton, Christ Lutheran, Wathena.

*Save the Date:*

**1.28.2017**

Women's Retreat  
Holy Cross—Wichita

*A Perfect Blend*

Presenter:  
**Gretchen Huesmann**  
[GretchenHuesmann.com](http://GretchenHuesmann.com)

☉ Lord, You have searched me and You know me. *Ps 139:1-16*

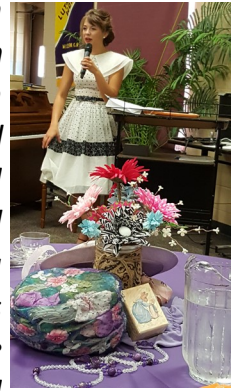




## SOCIETY NEWS



The LWML of Our Redeemer Lutheran Church in Hutchinson hosted a Ladies Tea on the afternoon of Sunday, July 24th. Many of the ladies in attendance wore hats and enjoyed tables decorated with flowers, vintage hats, gloves, purses and beads. Our speaker was Julia Hardenburger, a local high school student, who has a vintage clothing collection. She narrated a style show as her friends modeled vintage outfits from the 1920's through the 1970's. All of the ladies enjoyed tea and desserts. Two beautiful solos, "Alice Blue Gown" and "Buttons and Bows", were sung by Camilla Geuy Larson. The afternoon was completed with a devotional entitled "Outfitted for Service" based on Col. 3:12.



Submitted by Linda Stanton, Society Secretary of Our Redeemer LWML, Hutchinson



Gladys Ehm from First Lutheran Church in Phillipsburg, Kansas, has a heart of gold. She is always finding something new to help others. She is 93 years young and a true and faithful servant. Gladys has recently completed a new project: sleeping mats.

The mats were crocheted out of grocery bags. 500 to 600 bags were used on each one. Several pew sisters recycled their bags for her to use. The mats' size were about 48" x 60". Gladys donated the mats to Orphan Grain Train to be sent to those in need. A few ladies have asked her to teach them how to make the mats now, so her good spirit will hopefully continue to be passed along.

Submitted by Michela Hiesterman, First Lutheran Church LWML, Phillipsburg

### Lutheran Women in Mission

#### LWML Kansas District Mission Statement

*Empowered by the Holy Spirit, the LWML Kansas District will nurture, motivate, and prepare LCMS women to serve the Lord with gladness.*



Kansas LWML is on Facebook! Be sure to "like" our page! And you can follow the national LWML on their Facebook page too! Join today!

**Next Sonshine news deadline:  
December 5**

#### WEBSITES TO VISIT:

- [www.kansaslwml.org](http://www.kansaslwml.org)  
(Kansas site)
- [www.lwml.org](http://www.lwml.org)  
(National site)
- [www.kslcms.org](http://www.kslcms.org)  
(Kansas LCMS site)
- [www.lcms.org](http://www.lcms.org)  
(Synod site)