



THE KANSAS SONSHINE

CONVENTION SUMMARY

APRIL 2014

LUTHERAN WOMEN'S MISSIONARY LEAGUE KANSAS DISTRICT

35th Biennial LWML Kansas District Convention in Wichita—March 28-30, 2014

CONVENTION OFFERINGS

Offering #1:

LWML Kansas District
2014—2016 Mission Projects
\$5,349.38

Offering #2:

Globally Engaged in Outreach
(GEO) Missionaries
\$4,132.28

MISSION WALK / PRAYER LABYRINTH

Missionaries in Turkey
\$3,172.70

CONVENTION REGISTRATION

Board of Directors 26
Past Presidents 4
Delegates 166
Pastors 11
Guests 156

**** Total Convention Registration 363**

*(**Including 38 First Time Attendees, 16 Young Women Representatives, and 2 Teens)*



President Karen Morrison



ELECTION RESULTS

Vice President of Christian Life:

Elaine Engelman, Benedict, KS / Southeast Zone

Vice President of Gospel Outreach:

Bernie Reetz, Holcomb, KS / Southwest Zone

Vice President of Special Focus Ministries:

Sherri Rose, Linwood, KS / Topeka Zone

Treasurer:

Kim Burdett, Olathe, KS / KC CrossRoads Zone

Pastoral Counselor:

Rev. Jay Hobson, Hepler and Erie, KS / Southeast Zone

MISSION GOAL FOR 2014-2016

Total Mission Goal: \$152,750

Goal includes:

Mission Projects: \$40,000

Student Financial Aid: \$40,000

Mites to National: \$35,000

Lutheran Women in Mission



2014-2016 Executive Committee

(back row) Pastor Duncan, Pastor Hobson
 (middle row) Elaine, Sherri, Kerri Lynne, Brenda, Gloria, Bernie
 (front row) LaJean, President Karen, Kim

- 2014 GOD'S GRACIOUS GIFT FUND RECIPIENTS**
1. Concordia Seminary, St. Louis...\$428
 2. WSU Lutheran Student Center, Wichita...\$428
 3. St. Paul Lutheran Preschool, Preston...\$428
 4. Kansas-Nebraska Good News Radio...\$428
 5. In His Hands Preschool/Day Care, Cheney...\$428
 6. LLL/LWML Retreat scholarships...\$428
 7. The Christmas Store, Humboldt...\$291

HOPE + RENEWAL + STRENGTH + SOAR

Convention Theme Verse:

"...but those who hope in the LORD will renew their strength. They will soar on wings like eagles; they will run and not grow weary, they will walk and not be faint." Isaiah 40:31

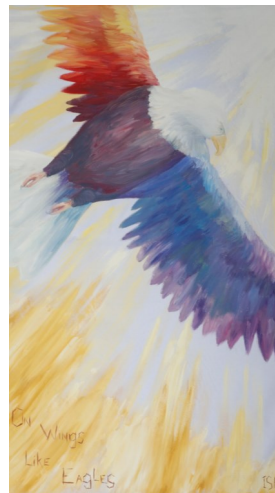


LWML Kansas District Zone Presidents

(left to right)
 Cathi, Arlyce, Kathy M., Beverly, Judy, Tiffany, Lisa, Kathy H., Janice, Mary, Betty, Marilyn

2014-2016 MISSION PROJECT GRANT RECIPIENTS

1. Orphan Grain Train KS Division...\$5,000
2. Concordia Seminary Food Bank, St. Louis...\$5,000
3. CCCS, Lead a Child, Bangladesh...\$6,000
4. WSU Lutheran Student Center, Wichita...\$5,000
5. Lutheran Braille Workers...\$5,000
6. Lutheran Heritage Foundation...\$5,000
7. Family Shield Ministries Radio Stations in KS...\$4,000
8. Holy Cross Lutheran Braille Work Center, Wichita...\$2,000
9. St. Paul Christian Preschool, Fairview...\$1,000
10. Bethany Lutheran Family Ministry, Wichita...\$1,550
11. Christ the King, Salina, Praise Band equipment...\$450



CONVENTION
 BANNER
 "On
 Wings,
 Like
 Eagles"

CONVENTION INGATHERING:

Over fifty large boxes, packed full of bagged, boxed and canned food items, were collected to be distributed to food pantries in the Wichita and Southeast Zones.

Servant Events

- † Assembled 5 Braille books of 2nd Chronicles
- † Decorated 440 lunch sacks for the homeless
- † Assembled 329 hygiene kits for homeless shelters
- † Tied 20 quilts for LWR

Mark your calendar and plan now to attend the 36th Biennial Convention of the LMWL Kansas District at the Four Points by Sheraton in Manhattan, KS, on April 15-17, 2016. The hosts will be ladies of the Linn, Manhattan, and Northeast Zones, using the theme For Such a Time as This - Ephesians 2:10