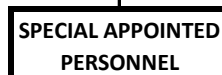
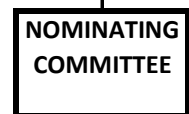
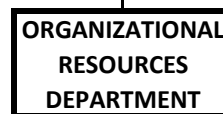
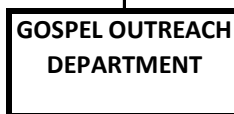
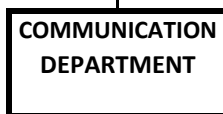
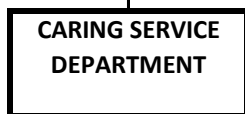
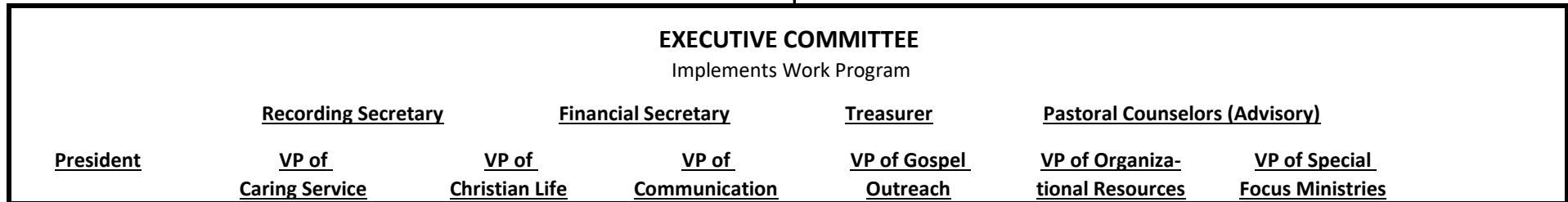
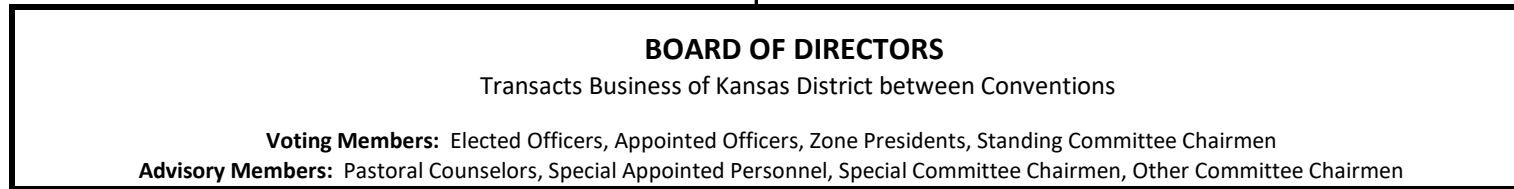
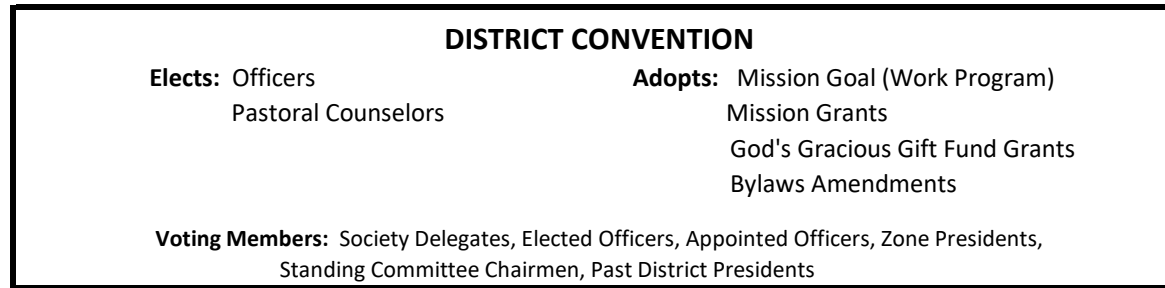


LWML KANSAS DISTRICT STRUCTURE



- Archivist/Historian
- Convention Bus Chair
- Convention Chairmen
- Heart to Heart Sister
- Lutheran World Relief
- Parliamentarian
- Prayer Mail
- Short-Term Missions

| COUNSELOR ASSIGNMENTS | |
|--------------------------|--------------------------|
| District Convention | |
| <u>Senior Counselor</u> | <u>Junior Counselor</u> |
| Christian Life | Caring Service |
| Special Focus Ministries | Communication |
| Nominating Committee | Organizational Resources |
| | Gospel Outreach |

| ZONES | |
|------------------------|-----------|
| Herington | Northeast |
| Hutchinson | Northwest |
| Kansas City CrossRoads | Southeast |
| Lincoln | Southwest |
| Linn | Topeka |
| Manhattan | Wichita |